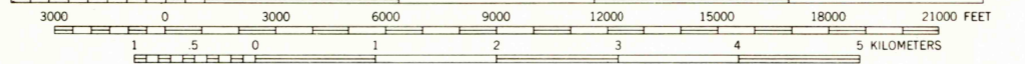


Mapped, edited, and published by the Geological Survey  
Control by USGS, USC&GS, and USCE

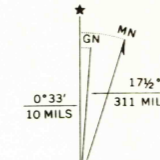
Compiled in 1961 from 1:24 000-scale maps of Esparto, Brooks, Lake Berryessa, and Monticello Dam 7.5 minute quadrangles, surveyed 1959  
Topography from aerial photographs by photogrammetric methods and by planetable surveys 1959. Aerial photographs taken 1957  
Underwater contours by U. S. Bureau of Reclamation

Polyconic projection. 1927 North American datum  
10,000-foot grid based on California coordinate system, zone 2  
1000-meter Universal Transverse Mercator grid ticks, zone 10, shown in blue  
Dashed land lines indicate approximate locations  
Land lines unsurveyed in parts of T. 8 N.-R. 3 W. and T. 9 N.-R. 2 W. and omitted in T. 9 N.-R. 3 W. and parts of T. 8 and 9 N.-R. 4 W., and T. 10 N.-R. 3 W. because of insufficient data

SCALE 1:62 500



CONTOUR INTERVAL 80 FEET  
DOTTED LINES REPRESENT 20 FOOT CONTOURS  
DATUM IS MEAN SEA LEVEL



THIS MAP COMPLIES WITH NATIONAL MAP ACCURACY STANDARDS  
FOR SALE BY U. S. GEOLOGICAL SURVEY, DENVER, COLORADO 80225 OR WASHINGTON, D. C. 20242  
A FOLDER DESCRIBING TOPOGRAPHIC MAPS AND SYMBOLS IS AVAILABLE ON REQUEST

ROAD CLASSIFICATION



State Route

This area also covered by 1:24 000-scale maps of Esparto, Brooks, Lake Berryessa, and Monticello Dam 7.5 minute quadrangles, surveyed 1959

LAKE BERRYESSA, CALIF.  
N 3830-W 12200/15

1959

AMS 1460 II-SERIES V795



QUADRANGLE LOCATION

U.S.G.S.  
Historical File  
Topographic Division

JUL 21 1967

6700