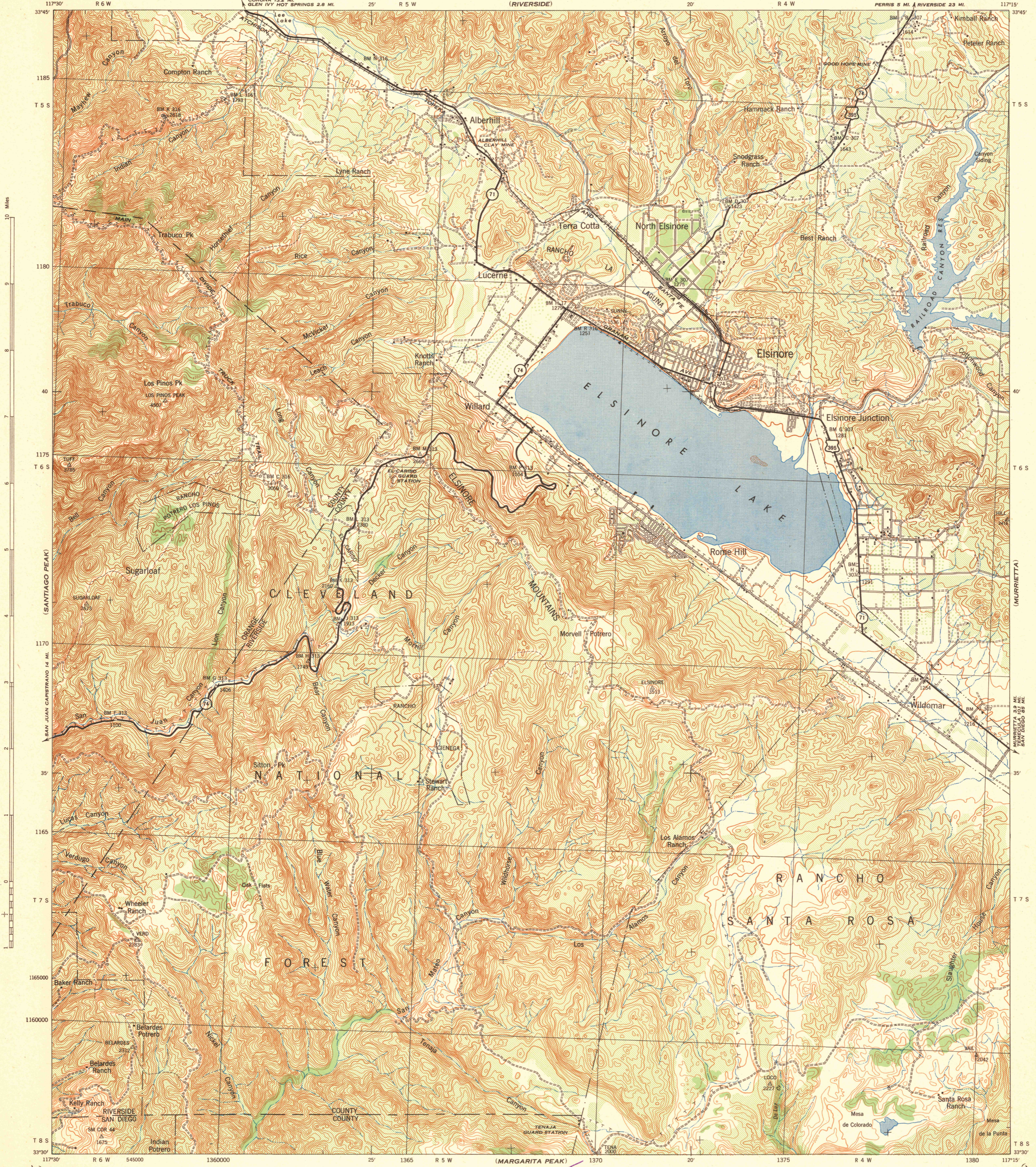
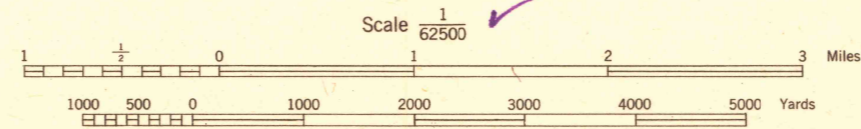


Advance edition
Subject to correction



Prepared under the direction of the Chief of Engineers, U. S. Army, 1941.
Horizontal control by 29th Engineers, U. S. Army, 1939 and U. S. Coast & Geodetic Survey, 1939.
Vertical control by 29th Engineers, U. S. Army, 1939, U. S. Coast & Geodetic Survey, 1939,
and U. S. Geological Survey, 1923.
Topography by 29th Engineers, U. S. Army, 1939-1941, using Stereo-comparograph
(intermediate elevations by multiplex stereo projectors) from T-3A 5 lens aerial
photography by 91st Observation Squadron, U. S. Army, 1939.
Polyconic Projection, North American Datum, 1927.

LOGGED OFF



ROAD CLASSIFICATIONS
Dependable hard surface, Heavy duty road, Secondary, hard surface, all weather road, More than two lanes indicated by note along road with tick at point of change.
Loose surface graded, dry weather road.
Unimproved road.
U. S. Route 54, State Route 113, 3 LANE 14 LANE

CONTOUR INTERVAL 50 FEET
DATUM IS MEAN SEA LEVEL
FIVE THOUSAND YARD GRID COMPUTED FROM GRID SYSTEM FOR PROGRESSIVE MAPS IN THE U. S. ZONE G, U. S. C. & G. S. SPECIAL PUBLICATION NO. 59
THE LAST THREE DIGITS OF THE GRID NUMBERS ARE OMITTED
NOTE: OFFICERS USING THIS MAP WILL WANT SEARCH CORRECTIONS AND ADDITIONS WHICH COME TO THEIR ATTENTION AND WILL DIRECT TO THE CHIEF OF ENGINEERS, WASHINGTON, D. C.

915-C
LAKE ELSINORE, CALIF.
N3330-W11715/15

(SAN JUAN CAPISTRANO)

(MURRIETTA)

(TEMECULA)