

(SEARLES LAKE) 1:250,000
(BARSTOW) 1:250,000

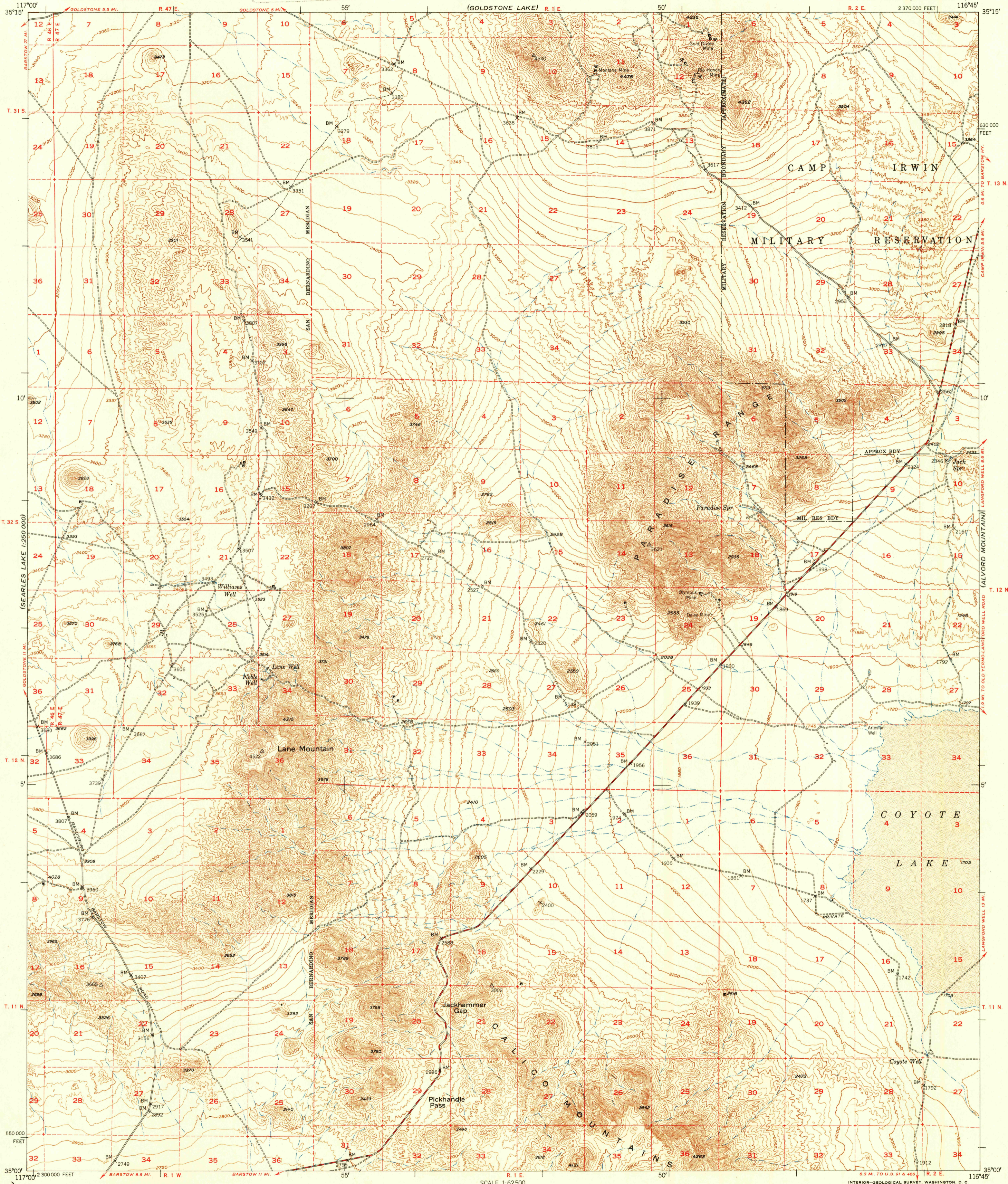
UNITED STATES
DEPARTMENT OF THE INTERIOR
GEOLOGICAL SURVEY

U.S.G.S.
FILE COPY
Inspection and Editing.

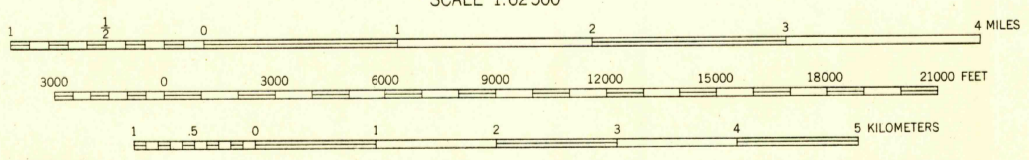
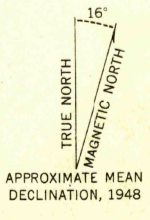
UNITED STATES
DEPARTMENT OF THE ARMY
CORPS OF ENGINEERS

LANE MOUNTAIN QUADRANGLE
CALIFORNIA-SAN BERNARDINO CO.
15 MINUTE SERIES (TOPOGRAPHIC)

(TEEFORT MOUNTAINS)



Mapped, edited, and published by the Geological Survey
Control by USC&GS and USGS
Topography from aerial photographs by multiplex methods
Aerial photographs taken 1948. Field check 1948
Polyconic projection. 1927 North American datum
10,000-foot grid based on California coordinate system,
zone 5
Dashed land lines indicate approximate location
Unchecked elevations are shown in brown



CONTOUR INTERVAL 40 FEET
DASHED LINES REPRESENT HALF-INTERVAL CONTOURS
DATUM IS MEAN SEA LEVEL

THIS MAP COMPLIES WITH NATIONAL MAP ACCURACY STANDARDS
FOR SALE BY U. S. GEOLOGICAL SURVEY, FEDERAL CENTER, DENVER, COLORADO OR WASHINGTON 25, D. C.
A FOLDER DESCRIBING TOPOGRAPHIC MAPS AND SYMBOLS IS AVAILABLE ON REQUEST

ROAD CLASSIFICATION
Heavy-duty... Lane Lane Light-duty...
Medium-duty... Lane Lane Unimproved dirt...
U. S. Route State Route

USGS
Historical File
Topographic Division
FILE COPY
Inspection and Editing.

LANE MOUNTAIN, CALIF.
N3500-W11645/15

EDITION OF 1951

AUG 14 1951 2070