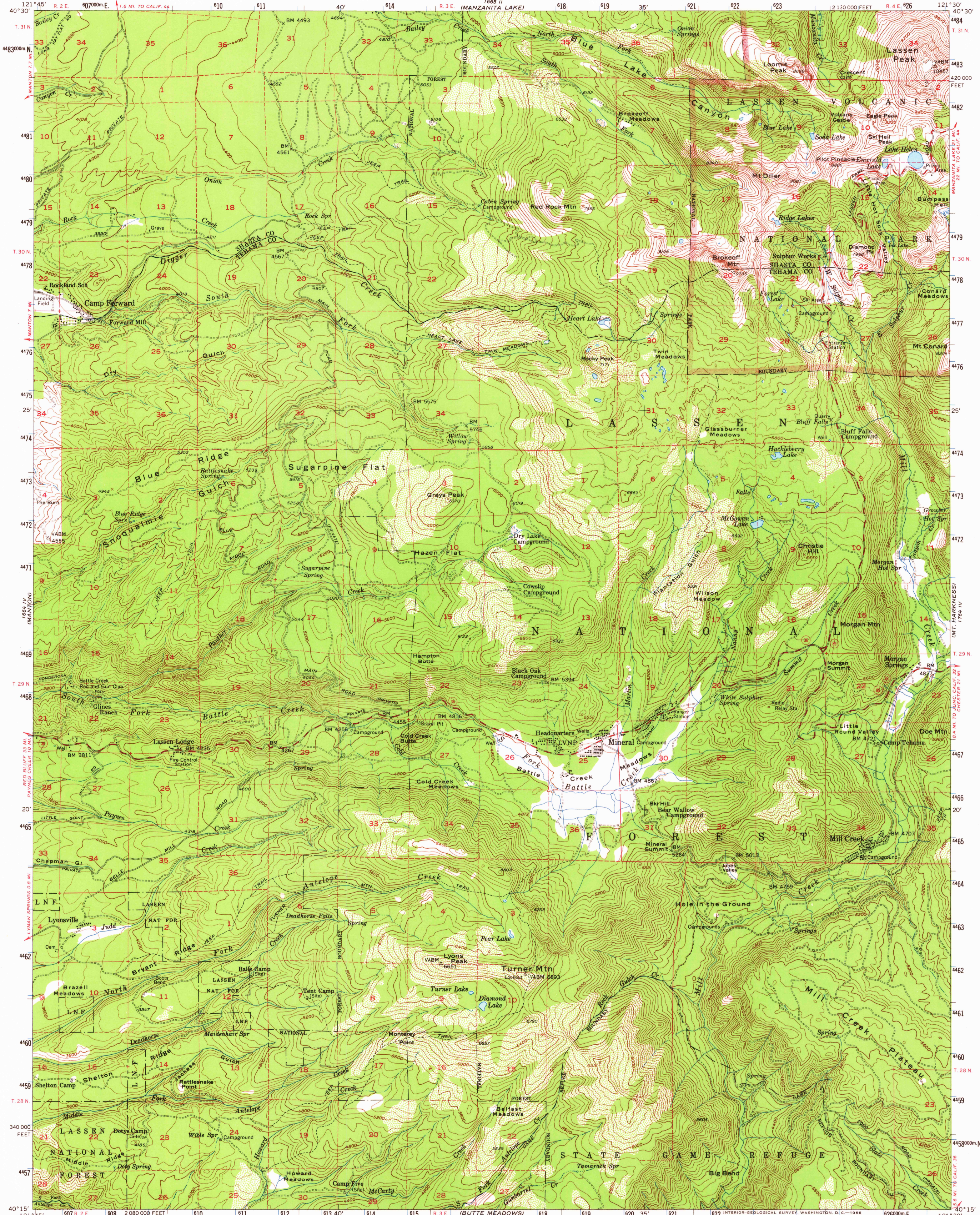


UNITED STATES  
DEPARTMENT OF THE INTERIOR  
GEOLOGICAL SURVEY

LASSEN PEAK QUADRANGLE  
CALIFORNIA  
15 MINUTE SERIES (TOPOGRAPHIC)



Mapped, edited, and published by the Geological Survey  
Control by USGS and USC&GS

Topography from aerial photographs by multiplex methods  
Aerial photographs taken 1951. Field check 1956

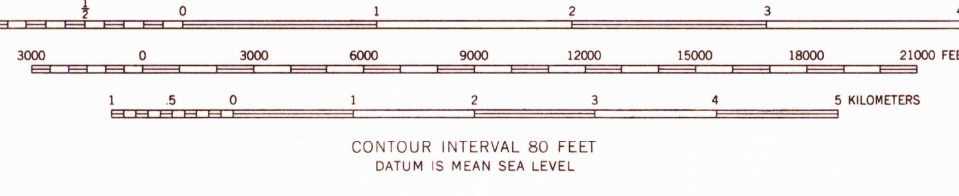
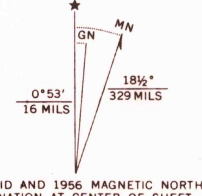
Polyconic projection. 1927 North American datum  
10,000-foot grid based on California coordinate system,  
zone 1

1000-meter Universal Transverse Mercator grid ticks,  
zone 10, shown in blue

Dashed land lines indicate approximate locations

Certain land lines are omitted  
because of insufficient data

Unchecked elevations are shown in brown



USGS  
Historical File  
Topographic Division

NSGS  
TOPOGRAPHIC DIVISION

ROAD CLASSIFICATION  
Medium-duty ——— Light-duty ———  
Unimproved dirt - - - - -  
State Route ○

LASSEN PEAK, CALIF.  
N4015-W12130/15

1956  
AMS 1664 I-SERIES V795

THIS MAP COMPLIES WITH NATIONAL MAP ACCURACY STANDARDS  
FOR SALE BY U. S. GEOLOGICAL SURVEY, DENVER, COLORADO 80225 OR WASHINGTON, D. C. 20242  
A FOLDER DESCRIBING TOPOGRAPHIC MAPS AND SYMBOLS IS AVAILABLE ON REQUEST