

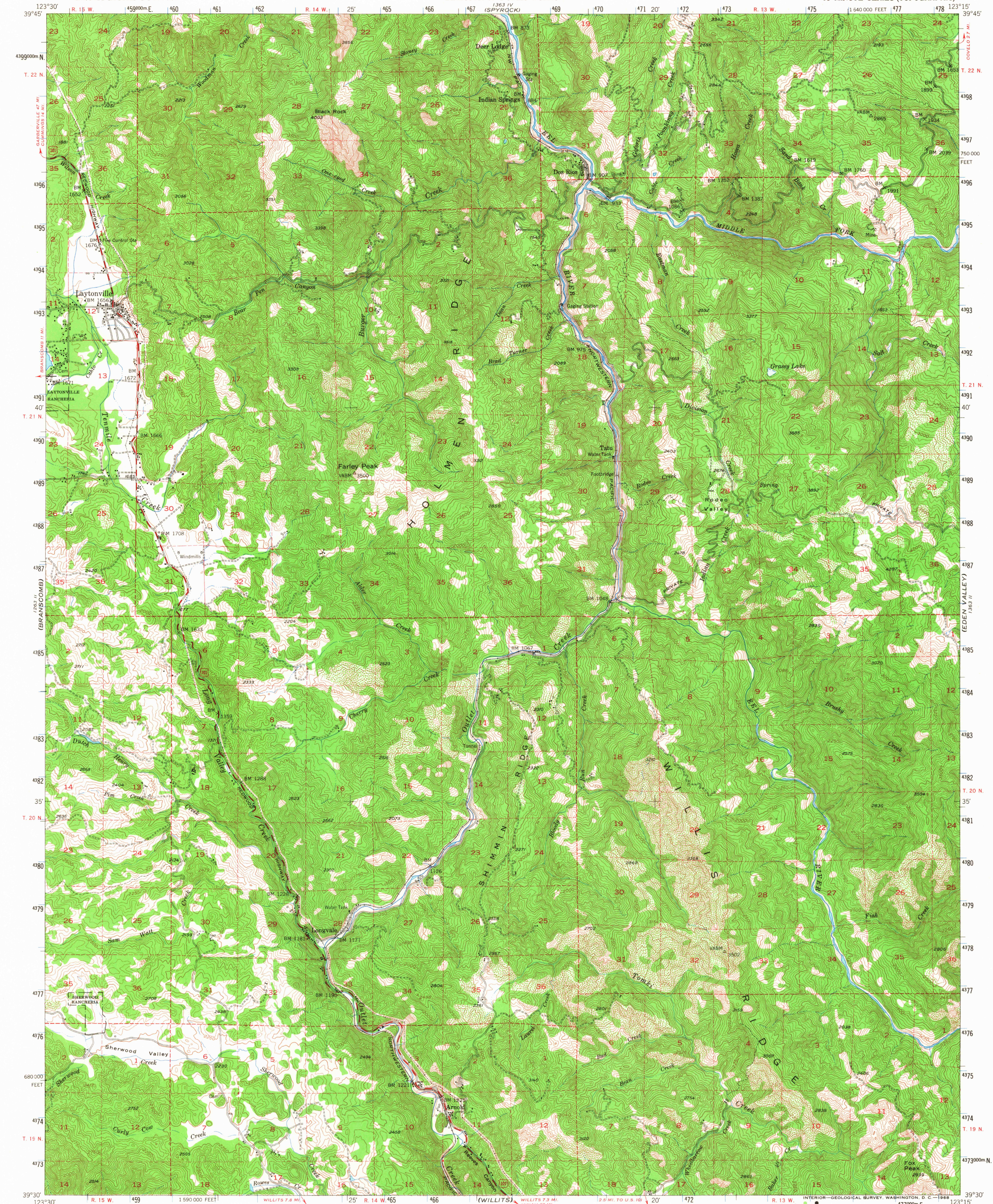
(LEGETT)

UNITED STATES
DEPARTMENT OF THE INTERIOR
GEOLOGICAL SURVEY

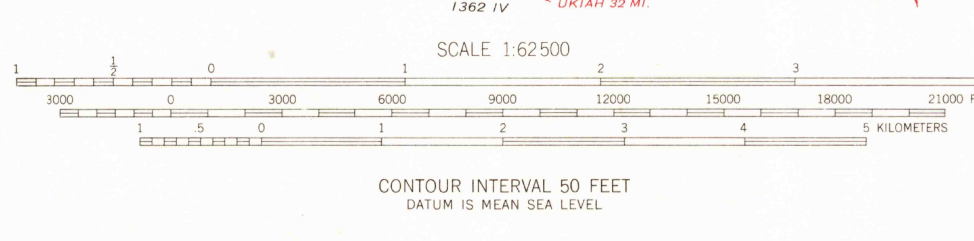
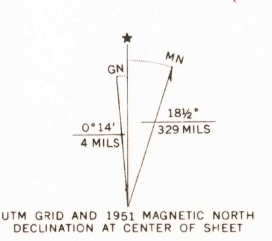
STATE OF CALIFORNIA
REPRESENTED BY THE
DIRECTOR OF PUBLIC WORKS

LAYTONVILLE QUADRANGLE
CALIFORNIA-MENDOCINO CO.
15 MINUTE SERIES (TOPOGRAPHIC)

(GOVELO)



Mapped, edited, and published by the Geological Survey
Control by USGS and USC&GS
Topography from aerial photographs by multiplex methods
Aerial photographs taken 1948. Field check 1951
Polyconic projection. 1927 North American datum
10,000-foot grid based on California coordinate system, zone 2
Dashed land lines indicate approximate locations
Unchecked elevations are shown in brown
1000-meter Universal Transverse Mercator grid ticks,
zone 10, shown in blue



USGS
Historical File
Topographic Division

ROAD CLASSIFICATION

Heavy-duty	4 LANE BLANE	Light-duty	2 LANE BLANE
Medium-duty	4 LANE BLANE	Unimproved dirt	-----

U. S. Route (square symbol) State Route (circle symbol)

U.S.G.S.
FILE COPY
TOPOGRAPHIC DIVISION

LAYTONVILLE, CALIF.
N9390-W12315/15
1951
AMS 1363 III-SERIES V795

5645
JUL 9 1968

THIS MAP COMPLIES WITH NATIONAL MAP ACCURACY STANDARDS
FOR SALE BY U. S. GEOLOGICAL SURVEY, DENVER, COLORADO 80225 OR WASHINGTON, D. C. 20242
A FOLDER DESCRIBING TOPOGRAPHIC MAPS AND SYMBOLS IS AVAILABLE ON REQUEST