

(CUMMINGS)

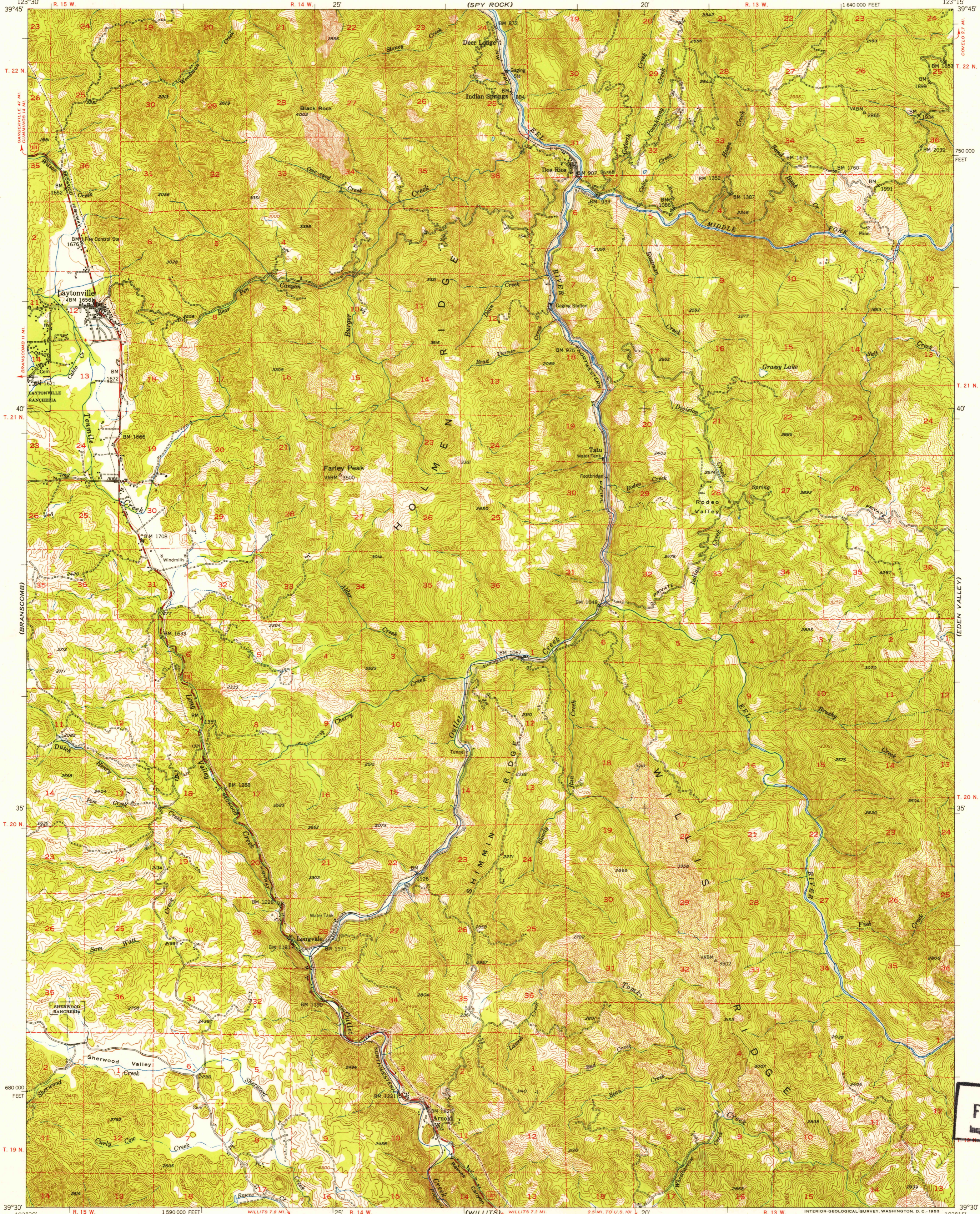
UNITED STATES
DEPARTMENT OF THE INTERIOR
GEOLOGICAL SURVEY

STATE OF CALIFORNIA
EARL WARREN, GOVERNOR
FRANK B. DURKEE, DIRECTOR OF PUBLIC WORKS
A. D. EDMONSTON, STATE ENGINEER

U. S. G. S.
FILE COPY
Inspection and Editing

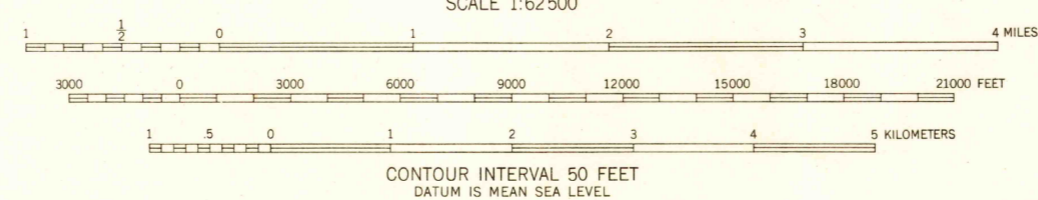
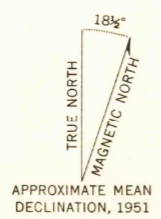
LAYTONVILLE QUADRANGLE
CALIFORNIA-MENDOCINO CO.
15 MINUTE SERIES (TOPOGRAPHIC)

(GOVELO)



(GLENBLAIR)

Mapped, edited, and published by the Geological Survey
Control by USGS and USC&GS
Topography from aerial photographs by multiplex methods
Aerial photographs taken 1948. Field check 1951
Polyconic projection. 1927 North American datum
10,000-foot grid based on California coordinate system, zone 2
Dashed land lines indicate approximate locations
Unchecked elevations are shown in brown



ROAD CLASSIFICATION
Heavy-duty **4 LANE 16 LANE** Light-duty
Medium-duty **4 LANE 16 LANE** Unimproved dirt
U. S. Route State Route

USGS
Historical File
Topographic Division

LAYTONVILLE, CALIF.
N3930-W12315/15

THIS MAP COMPLIES WITH NATIONAL MAP ACCURACY STANDARDS
FOR SALE BY U. S. GEOLOGICAL SURVEY, FEDERAL CENTER, DENVER, COLORADO OR WASHINGTON 25, D. C.
A FOLDER DESCRIBING TOPOGRAPHIC MAPS AND SYMBOLS IS AVAILABLE ON REQUEST

1951

MAR 10 1953

3210