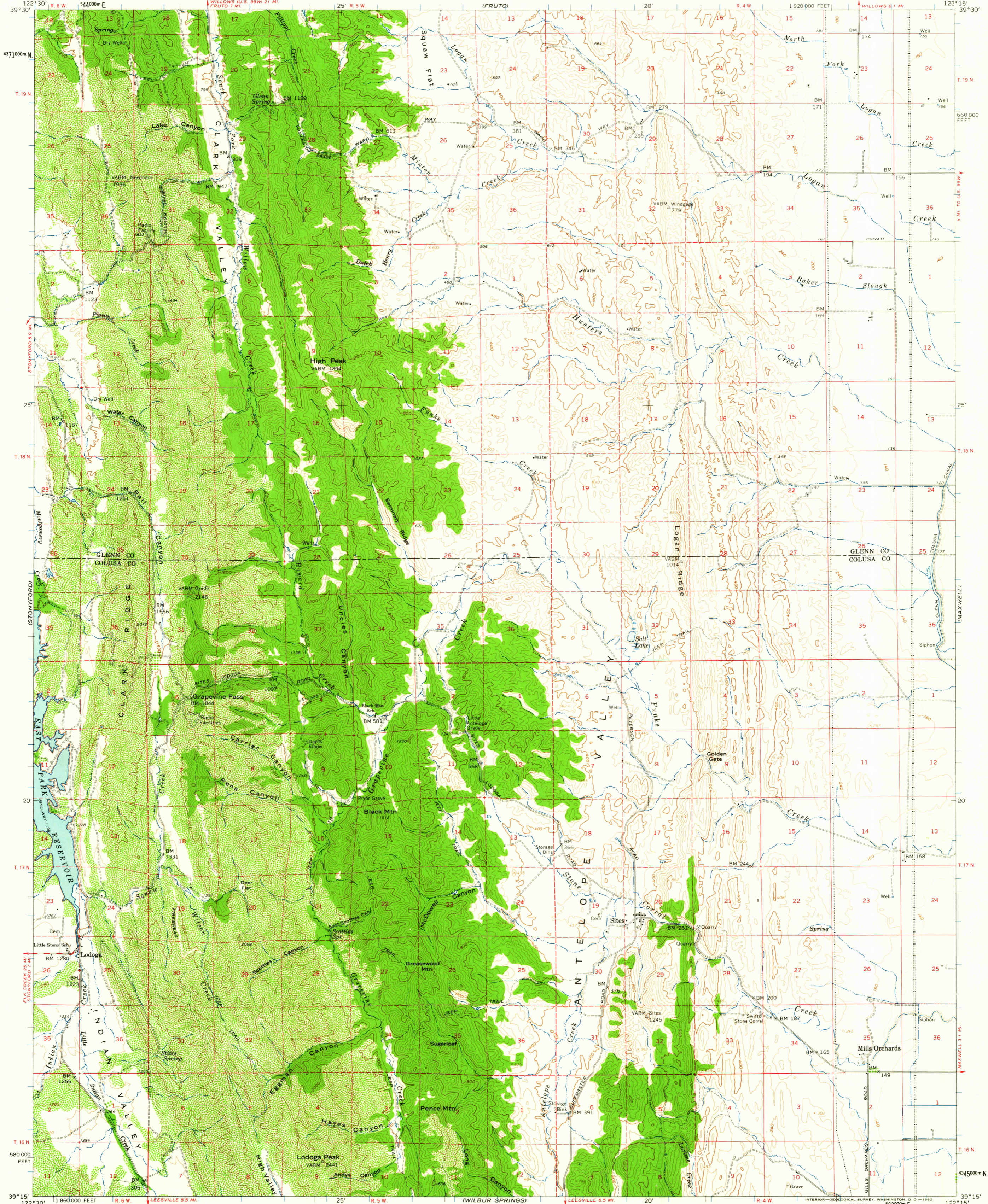
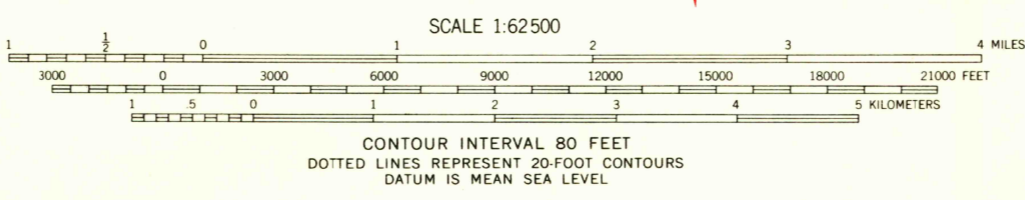
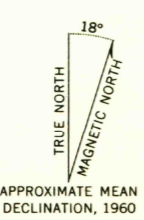


UNITED STATES  
DEPARTMENT OF THE INTERIOR  
GEOLOGICAL SURVEY

LOGOGA QUADRANGLE  
CALIFORNIA  
15 MINUTE SERIES (TOPOGRAPHIC)



Mapped, edited, and published by the Geological Survey in cooperation with California Department of Water Resources Control by USGS and USC&GS  
 East half compiled in 1961 from 1:24 000-scale maps dated 1958. West half topography by photogrammetric methods from aerial photographs taken 1957. Field checked 1960  
 Polyconic projection. 1927 North American datum  
 10,000-foot grid based on California coordinate system, zone 2  
 1000-meter Universal Transverse Mercator grid ticks, zone 10, shown in blue  
 Where omitted, land lines have not been established



ROAD CLASSIFICATION  
 Medium-duty ——— Light-duty ———  
 Unimproved dirt - - - - -

The east half of this area also covered by 7.5 minute, 1:24 000 scale maps: Logan Ridge 1958 and Sites 1958



USGS  
Historical File  
Topographic Division  
 LODOGA, CALIF.  
N3915-W12215/15  
1960

THIS MAP COMPLIES WITH NATIONAL MAP ACCURACY STANDARDS  
 FOR SALE BY U.S. GEOLOGICAL SURVEY, DENVER 25, COLORADO OR WASHINGTON 25, D. C.  
 A FOLDER DESCRIBING TOPOGRAPHIC MAPS AND SYMBOLS IS AVAILABLE ON REQUEST

U.S.S. FILE COPY TOPOGRAPHIC DIVISION  
 DEC 26 1962  
 2210