

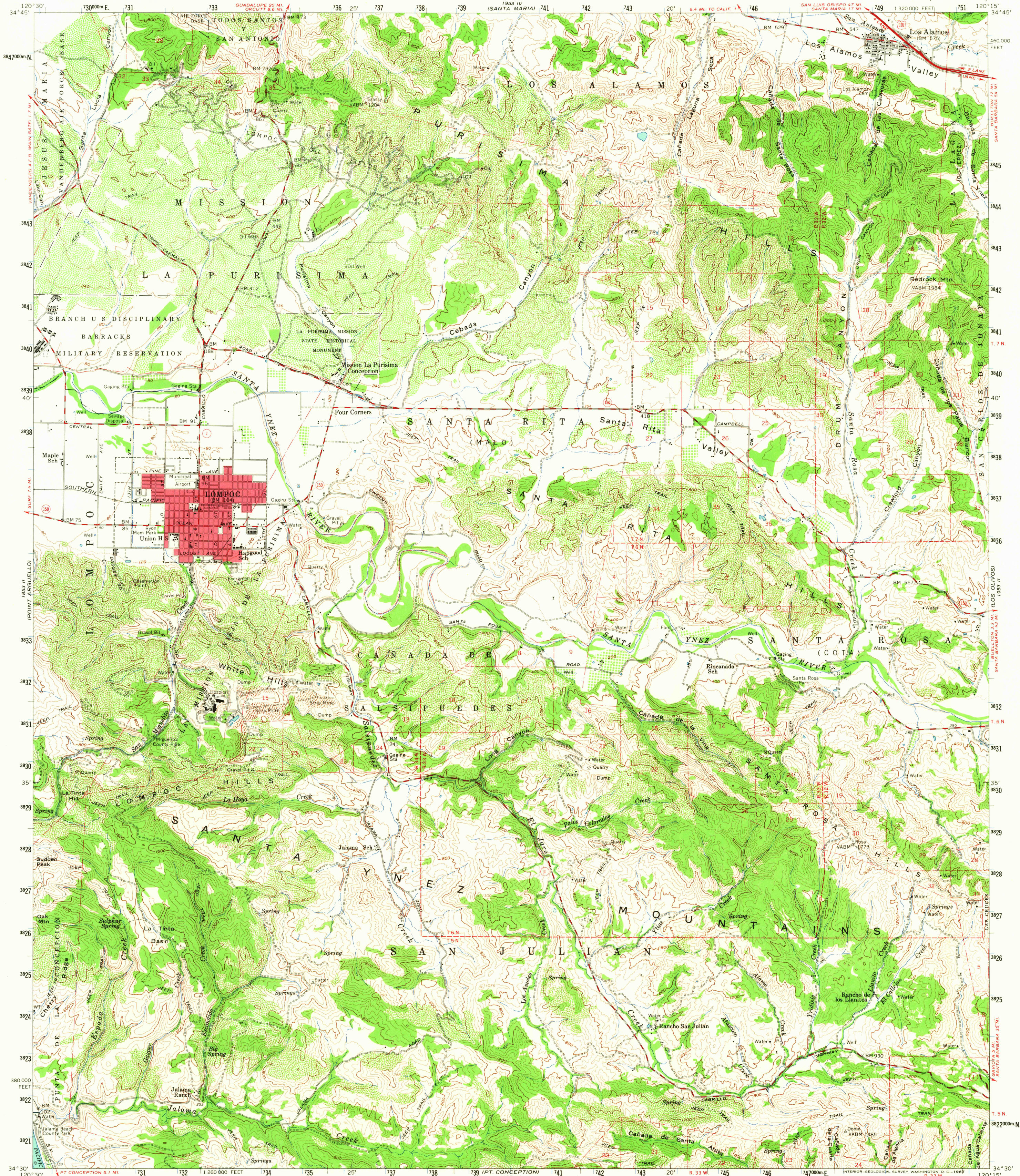
1853 I
(POINT SALU)

UNITED STATES
DEPARTMENT OF THE INTERIOR
GEOLOGICAL SURVEY

STATE OF CALIFORNIA
DEPARTMENT OF WATER RESOURCES

LOMPOC QUADRANGLE
CALIFORNIA—SANTA BARBARA CO.
15 MINUTE SERIES (TOPOGRAPHIC)

1853 I
(TEPUSQUET PEAK)



Mapped, edited, and published by the Geological Survey

Control by USGS, USC&GS, and USCE

Compiled in 1960 from 1:24,000-scale maps of Los Alamos, Lompoc, Lompoc Hills, and Santa Rosa Hills 7.5 quadrangles, surveyed 1959

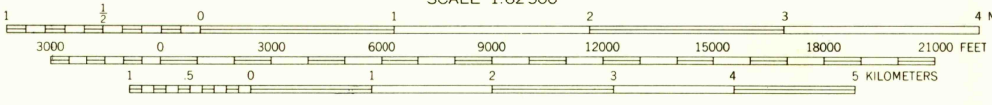
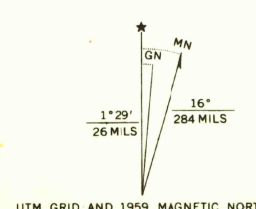
Topography from aerial photographs by photogrammetric methods and by planetable surveys. Aerial photographs taken 1956

Hydrography compiled from USC&GS surveys, 1933

Polycyclic projection. 1927 North American datum 10,000-foot grid based on California coordinate system, zone 5 1,000-meter Universal Transverse Mercator grid ticks, zone 10, shown in blue

Red tint indicates areas in which only landmark buildings are shown

Dashed land lines indicate approximate locations



CONTOUR INTERVAL 80 FEET
DOTTED LINES REPRESENT 40-FOOT CONTOURS
DATUM IS MEAN SEA LEVEL
DEPTH CURVES IN FEET—DATUM IS MEAN LOWER LOW WATER
SHORELINE SHOWN REPRESENTS THE APPROXIMATE LINE OF MEAN HIGH WATER
THE MEAN RANGE OF TIDE IS APPROXIMATELY 4 FEET

THIS MAP COMPLIES WITH NATIONAL MAP ACCURACY STANDARDS
FOR SALE BY U. S. GEOLOGICAL SURVEY, DENVER, COLORADO 80225 OR WASHINGTON, D. C. 20242
A FOLDER DESCRIBING TOPOGRAPHIC MAPS AND SYMBOLS IS AVAILABLE ON REQUEST

ROAD CLASSIFICATION
Heavy-duty ——— Light-duty ———
Medium-duty ——— Unimproved dirt ———

U. S. Route ——— State Route ———

This area also covered by 1:24,000-scale maps of Los Alamos, Lompoc, Lompoc Hills, and Santa Rosa Hills 7.5 minute quadrangles, surveyed 1959

LOMPOC, CALIF.

N3430—W12015/15

1959

AMS 1953 III—SERIES V795



QUADRANGLE LOCATION

U.S.G.S
Historical File
Topographic Division

5195
APR 4 1967