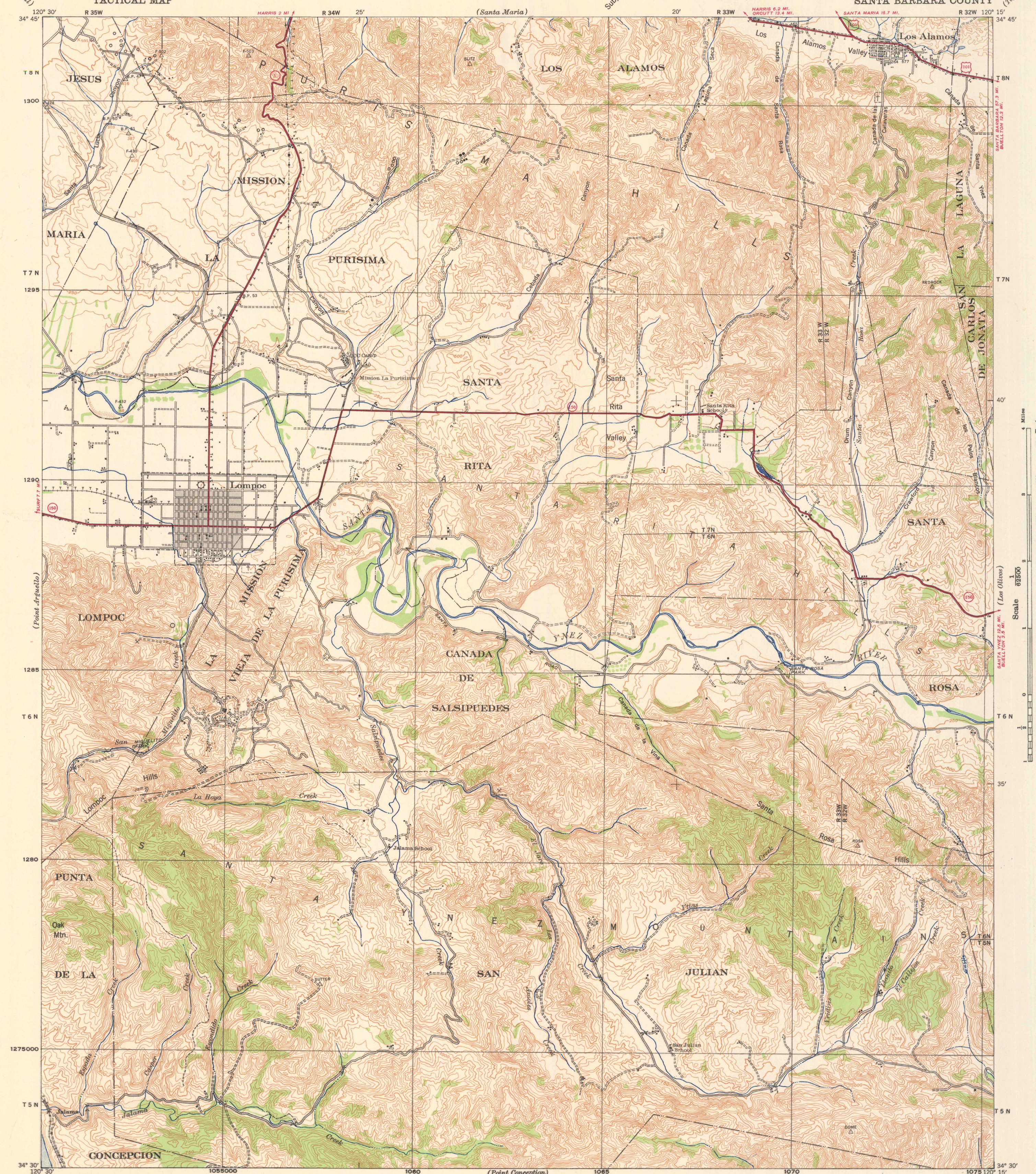


CORPS OF ENGINEERS, U. S. ARMY
TACTICAL MAP

CALIFORNIA
LOMPOC QUADRANGLE
GRID ZONE "G"
SANTA BARBARA COUNTY

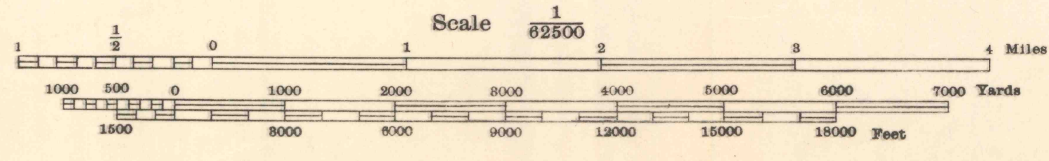
Advance Edition
Subject To Correction



(Point Seal)
120° 30'
34° 45'
T 8 N
1300
T 7 N
1295
1290
1285
T 6 N
1280
T 5 N
1275000
34° 30'

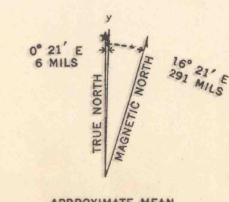
(Tennique Peak)
R 35W
R 34W 25'
20'
R 33W
120° 15'
34° 45'
T 8 N
T 7 N
40'
T 6 N
35'
T 5 N
R 32W 15'

Prepared under the direction of the Chief of Engineers, U. S. Army, 1942.
Horizontal Control by U. S. Coast and Geodetic Survey, 1933, Fairchild, 1941, and the 29th Engineers, U. S. Army, 1941.
Vertical Control by U. S. Coast and Geodetic Survey, 1924, 1927, 1936, U. S. G. S. (unknown) U. S. E. D., 1938, and the 29th Engineers, U. S. Army, 1941.
Topography by 29th Engineers, U. S. Army, 1942, utilizing multiplex aero-projectors, from Tandem T-3A (5 lens) aerial photographs.
Photography by 2nd Photographic Squadron, Air Corps, U. S. Army, 1941.
Polyconic Projection, North American 1927 Datum.



Contour Interval 50 feet
Datum is mean sea level (1929 Adj.)

FIVETHOUSAND YARD GRID COMPUTED FROM "GRID SYSTEM FOR PROGRESSIVE MAPS IN THE U. S. ZONE G, U. S. C. & G. S. SPECIAL PUBLICATION NO. 59 (THE LAST THREE DIGITS OF THE GRID NUMBERS ARE OMITTED)"
NOTE: OFFICERS USING THIS MAP WILL WANT HEREON CORRECTIONS AND ADDITIONS WHICH COME TO THEIR ATTENTION AND MAIL DIRECT TO "THE CHIEF OF ENGINEERS, WASHINGTON, D. C."



ROUTES USUALLY TRAVELED
HARD IMPERVIOUS SURFACES
OTHER SURFACE IMPROVEMENTS
1942
101 U. S. ROUTE 1 STATE ROUTE

LOMPOC, CALIF.
N3430-W12015/15

59820 809-C