

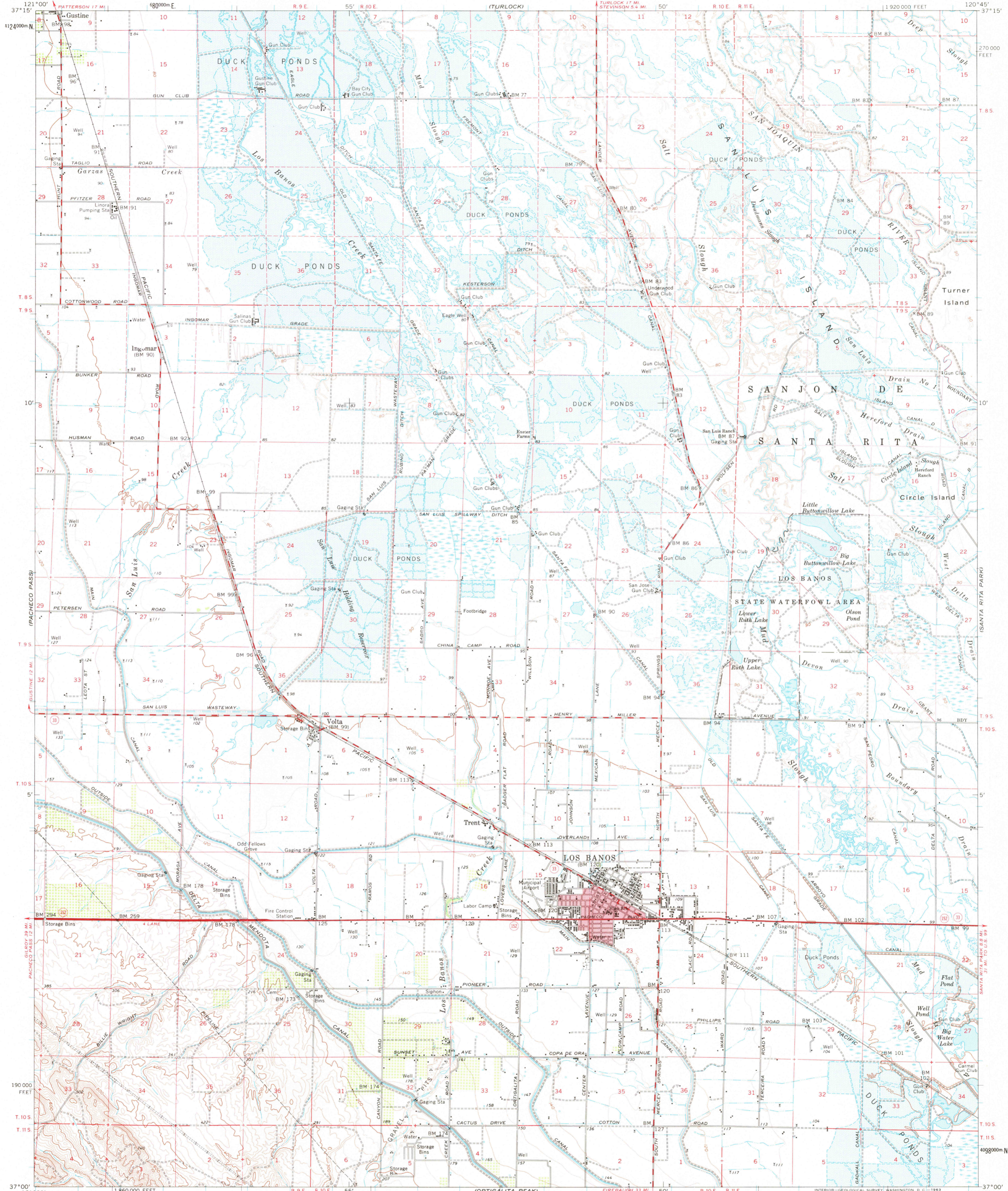
(ORESTIMA)

UNITED STATES
DEPARTMENT OF THE INTERIOR
GEOLOGICAL SURVEY

STATE OF CALIFORNIA
DEPARTMENT OF WATER RESOURCES

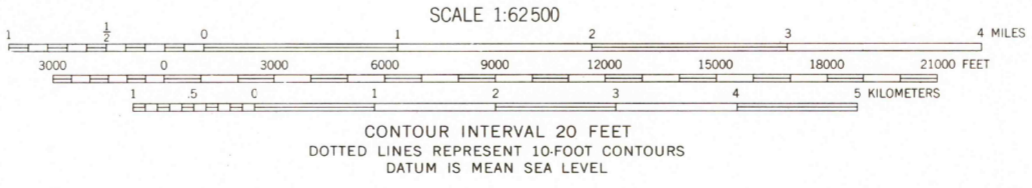
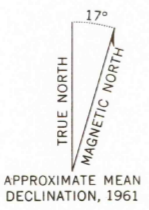
LOS BANOS QUADRANGLE
CALIFORNIA—MERCED CO.
15 MINUTE SERIES (TOPOGRAPHIC)

(ATWATER)



Mapped, edited, and published by the Geological Survey
Control by USGS, USC&GS, and U. S. Bureau of Reclamation
Compiled in 1962 from 1:24 000-scale maps dated 1960-61
Polyconic projection. 1927 North American datum
10,000-foot grid based on California coordinate system, zone 3
1,000-meter Universal Transverse Mercator grid ticks, zone 10,
shown in blue

Red tint indicates area in which only landmark buildings are shown
Dotted land lines established by private survey
A portion of this map lies within a subsidence area
Areas covered by dashed light-blue pattern
are subject to controlled inundation



ROAD CLASSIFICATION

- Heavy-duty
- Medium-duty
- Light-duty
- Unimproved dirt
- State Route

This area also covered by 7.5-minute, 1:24 000-scale
maps: San Luis Ranch 1961, Ingomar 1960,
Volta 1960, and Los Banos 1960



THIS MAP COMPLIES WITH NATIONAL MAP ACCURACY STANDARDS
FOR SALE BY U. S. GEOLOGICAL SURVEY, DENVER 25, COLORADO OR WASHINGTON 25, D. C.
A FOLDER DESCRIBING TOPOGRAPHIC MAPS AND SYMBOLS IS AVAILABLE ON REQUEST

LOS BANOS, CALIF.
N3700—W12045/15

1961

(QUEEN SABE)

(SANTA RITA PARK)

(SANTA RITA PARK)