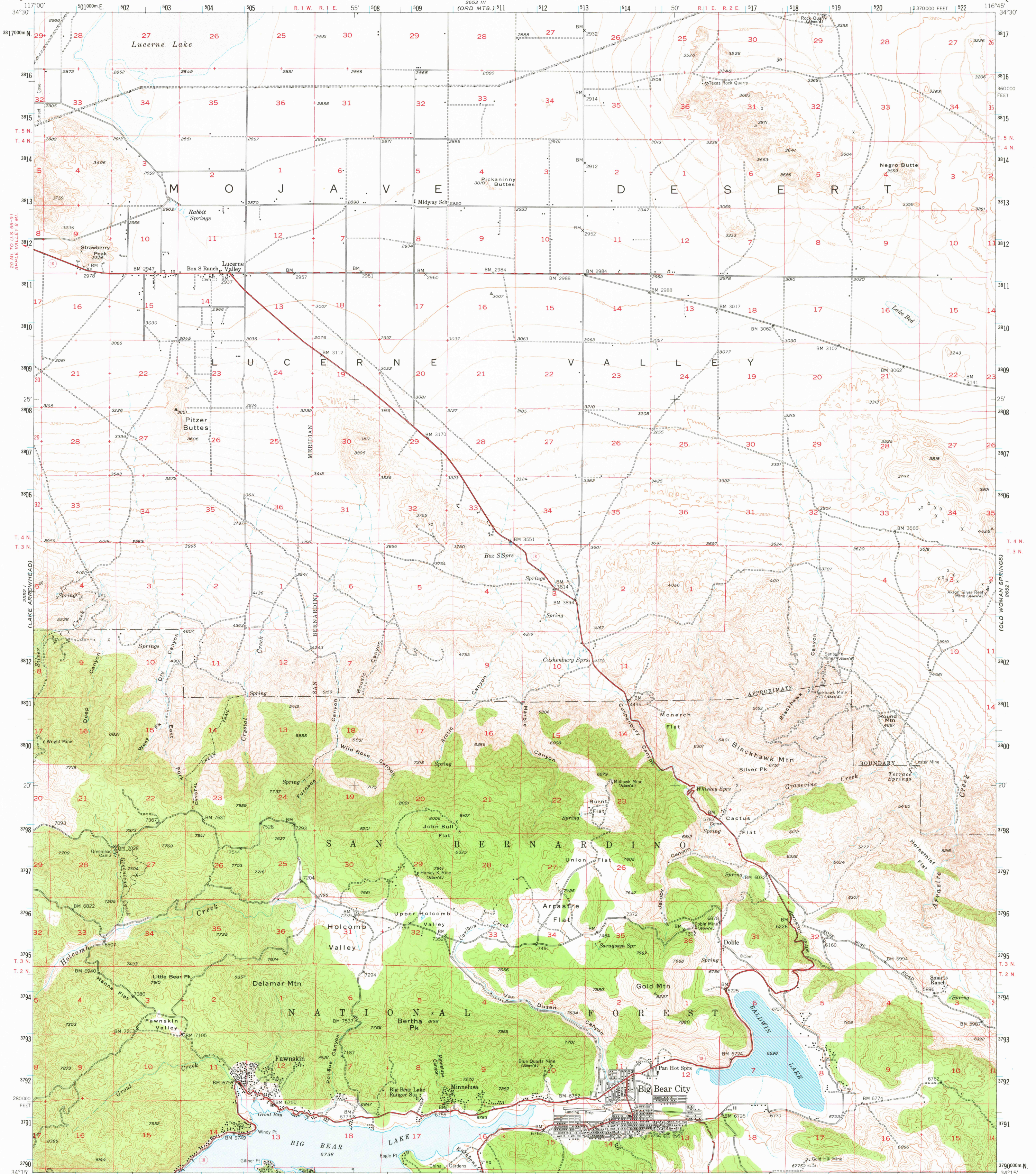
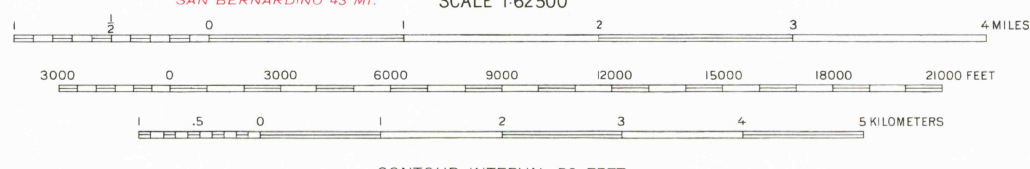
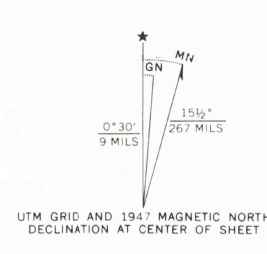


UNITED STATES  
DEPARTMENT OF THE INTERIOR  
GEOLOGICAL SURVEY

LUCERNE VALLEY QUADRANGLE  
CALIFORNIA—SAN BERNARDINO CO.  
15 MINUTE SERIES (TOPOGRAPHIC)



Mapped, edited and published by the Geological Survey  
Control by USGS and USC&GS  
Topography by plane-table surveys 1946  
and from aerial photographs by photogrammetric methods 1947  
Aerial photographs taken 1945  
Polyconic projection. 1927 North American datum  
10,000-foot grid based on California coordinate system  
zone 5  
Certain land lines are omitted because of  
insufficient data. All recovered corners are shown  
1000-meter Universal Transverse Mercator grid ticks,  
zone 11, shown in blue



CONTOUR INTERVAL 50 FEET  
NATIONAL GEODETIC VERTICAL DATUM OF 1929



THIS MAP COMPLIES WITH NATIONAL MAP ACCURACY STANDARDS  
FOR SALE BY U.S. GEOLOGICAL SURVEY, DENVER, COLORADO 80225, OR RESTON, VIRGINIA 22092  
A FOLDER DESCRIBING TOPOGRAPHIC MAPS AND SYMBOLS IS AVAILABLE ON REQUEST

USGS  
Historical File  
Topographic Division  
1947  
AMS 2652 IV—SERIES V795

LUCERNE VALLEY, CALIF. FEB 18 1978  
N3415—W11645/15

21000