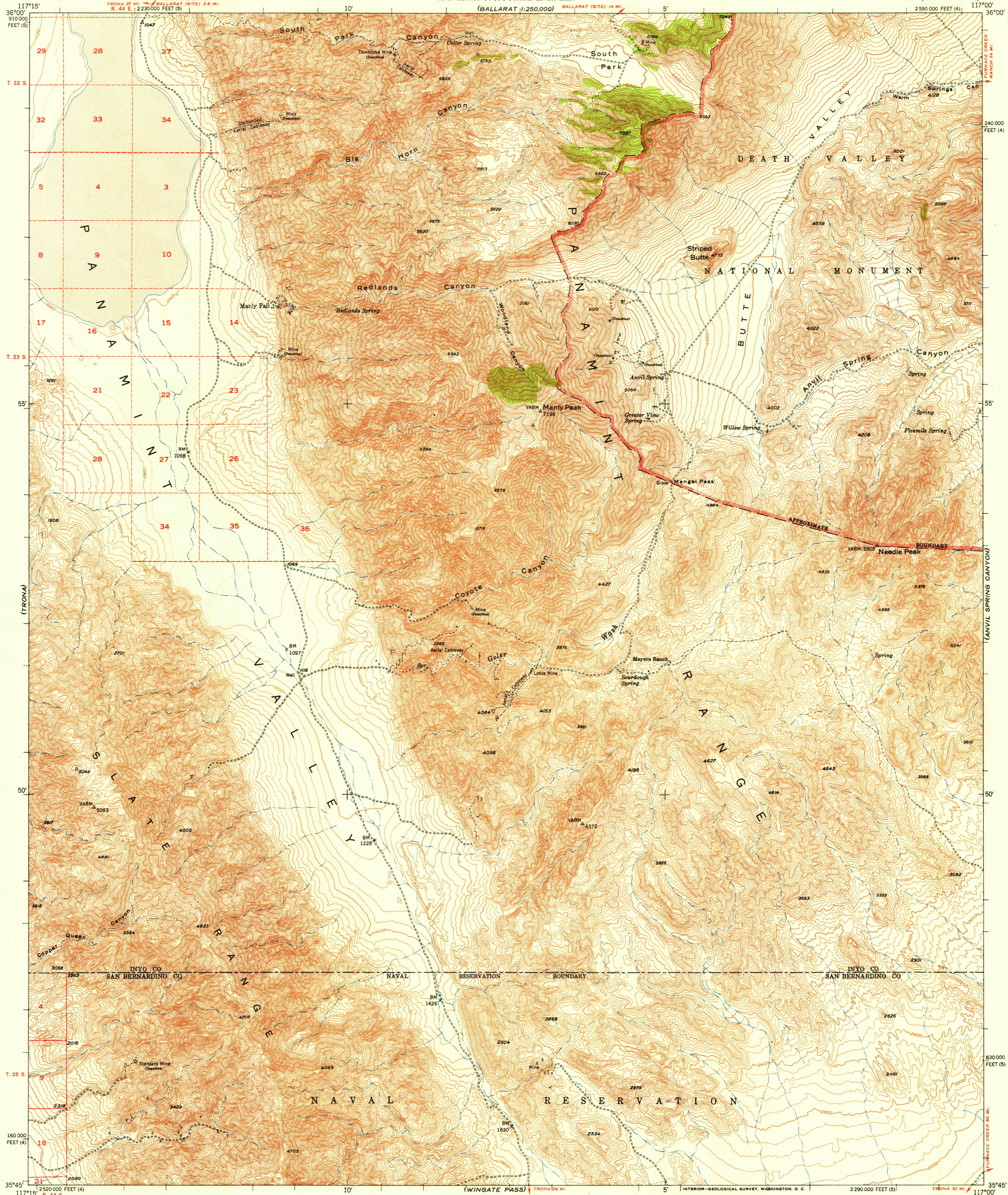


U.S.G.S.  
FILE COPY  
Inspection and Editing.

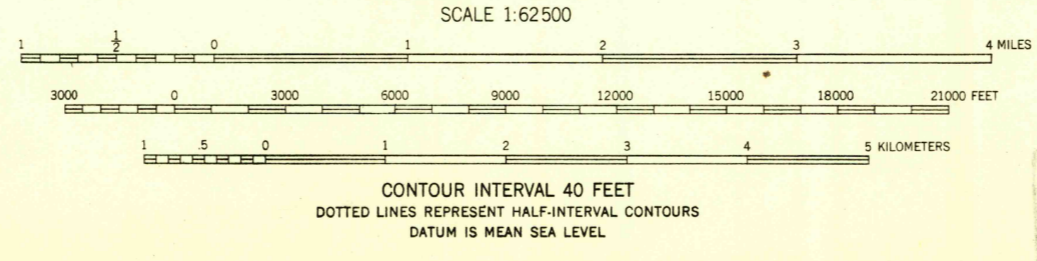
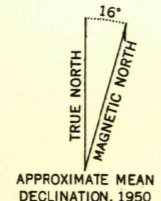
UNITED STATES  
DEPARTMENT OF THE INTERIOR  
GEOLOGICAL SURVEY

STATE OF CALIFORNIA  
EARL WARREN, GOVERNOR  
C. H. PURCELL, DIRECTOR OF PUBLIC WORKS  
A. D. EDMONSTON, STATE ENGINEER  
(BALLARAT 1:250,000) BALLARAT (SITE) 14 MI.

MANLY PEAK QUADRANGLE  
CALIFORNIA  
15 MINUTE SERIES (TOPOGRAPHIC)



Mapped, edited, and published by the Geological Survey  
Control by USGS and USC&GS  
Topography from aerial photographs by multiplex methods  
Aerial photographs taken 1946. Field check 1950  
Polyconic projection. 1927 North American datum  
10,000-foot grid based on California coordinate system,  
zones 4 and 5  
Dashed land lines indicate approximate location  
Unchecked elevations are shown in brown



ROAD CLASSIFICATION

Heavy-duty	LANE 16 LANE	Light-duty
Medium-duty	LANE 16 LANE	Unimproved dirt
U. S. Route		State Route

U.S.G.S. USGS  
FILE COPY  
Historical File  
Topographic Division  
Inspection and Editing.

MANLY PEAK, CALIF.  
N3545-W11700/15  
EDITION OF 1951

THIS MAP COMPLIES WITH NATIONAL MAP ACCURACY STANDARDS  
FOR SALE BY U. S. GEOLOGICAL SURVEY, FEDERAL CENTER, DENVER, COLORADO OR WASHINGTON 25, D. C.  
A FOLDER DESCRIBING TOPOGRAPHIC MAPS AND SYMBOLS IS AVAILABLE ON REQUEST