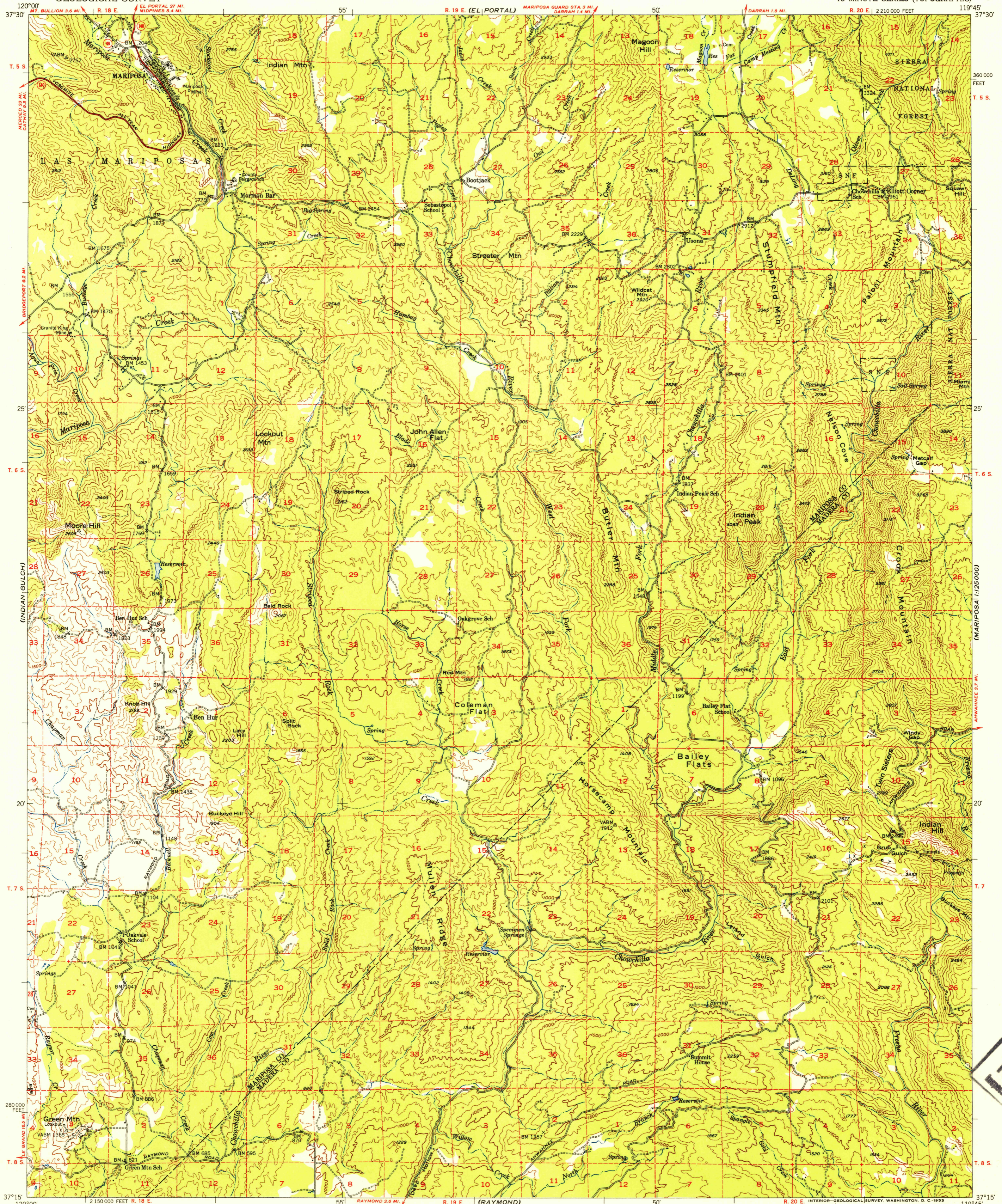


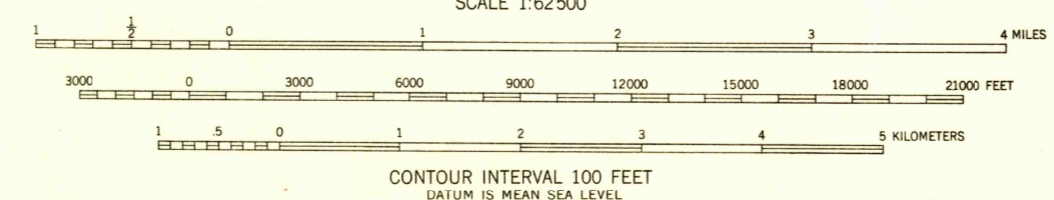
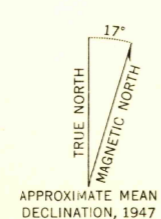
U.S.G.S.
FILE COPY
Inspection and Editing

MARIPOSA QUADRANGLE
CALIFORNIA
15 MINUTE SERIES (TOPOGRAPHIC)

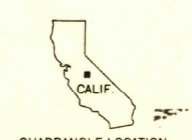
UNITED STATES
DEPARTMENT OF THE INTERIOR
GEOLOGICAL SURVEY



Mapped, edited, and published by the Geological Survey
Control by USGS and USC&GS
Topography from aerial photographs by multiplex methods
Aerial photographs taken 1945. Field check 1947
Polyconic projection. 1927 North American datum
10,000-foot grid based on California coordinate system, zone 3
Dashed land lines indicate approximate locations



ROAD CLASSIFICATION
Heavy-duty 4 LANE 16 LANE Light-duty
Medium-duty 4 LANE 16 LANE Unimproved dirt
U.S. Route State Route
This area is also covered by 1:24,000 scale maps of
Stumpfield Mtn., Mariposa, Ben Hur, and Horsecamp Mtn.
7.5 minute quadrangles



USGS
Historical File
Topographic Division
MARIPOSA, CALIF.
N3715-W11945/15
1947

FOR SALE BY U. S. GEOLOGICAL SURVEY, FEDERAL CENTER, DENVER, COLORADO 25, D. C.
A FOLDER DESCRIBING TOPOGRAPHIC MAPS AND SYMBOLS IS AVAILABLE ON REQUEST

U.S.G.S.
FILE COPY
Inspection and Editing

SEP 24 1953