

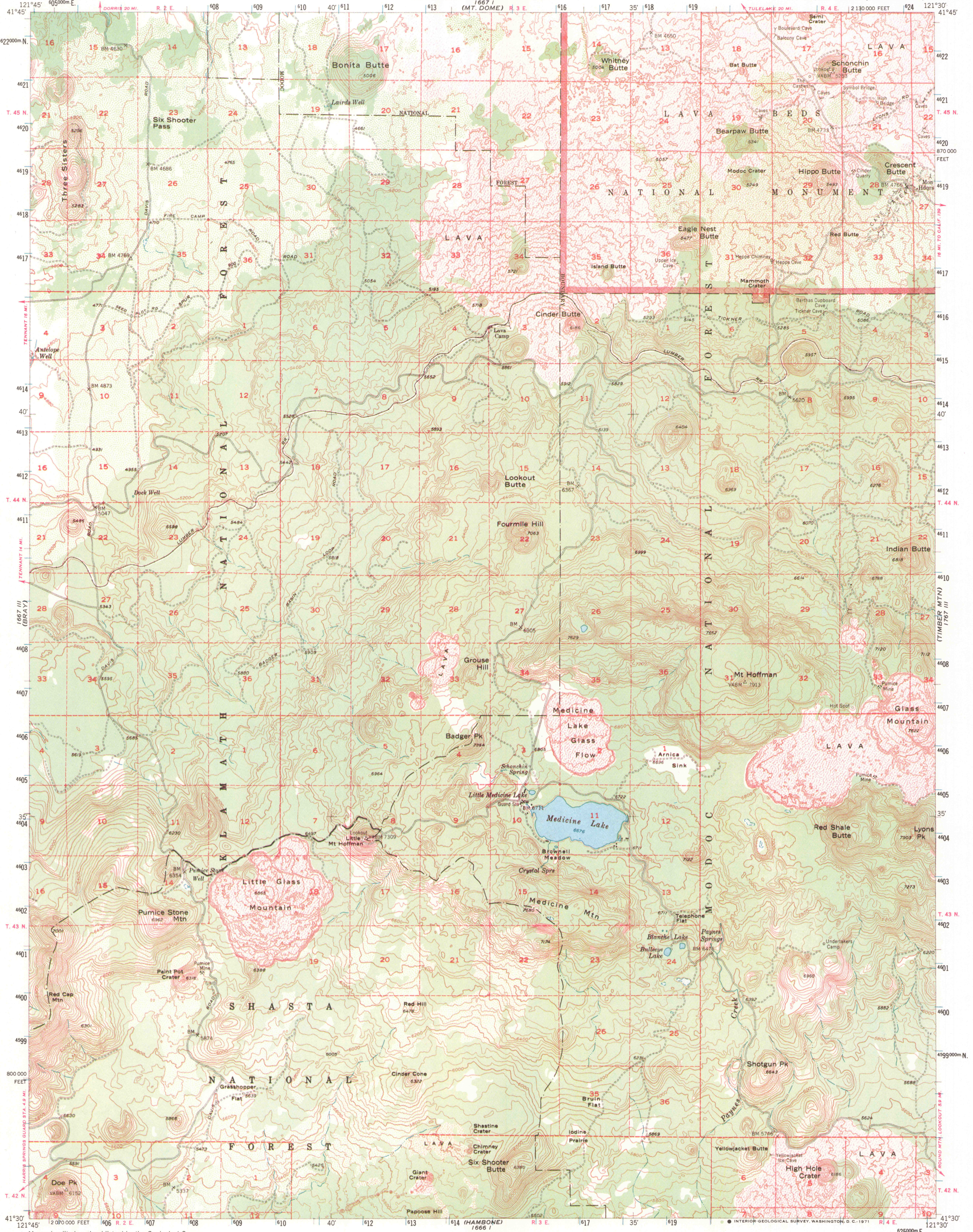
1667 IV
(CORRIS)

1767 IV
(TULELAKE)

UNITED STATES
DEPARTMENT OF THE INTERIOR
GEOLOGICAL SURVEY

STATE OF CALIFORNIA
DEPARTMENT OF WATER RESOURCES
(MT. DOME)

MEDICINE LAKE QUADRANGLE
CALIFORNIA-SISKIYOU CO.
15 MINUTE SERIES (TOPOGRAPHIC)



Mapped, edited, and published by the Geological Survey

Control by USGS, USC&GS, and USFS

Topography from aerial photographs by multiplex methods

Aerial photographs taken 1948. Field check 1952

Polyconic projection. 1927 North American datum

10,000-foot grid based on California coordinate system, zone 1

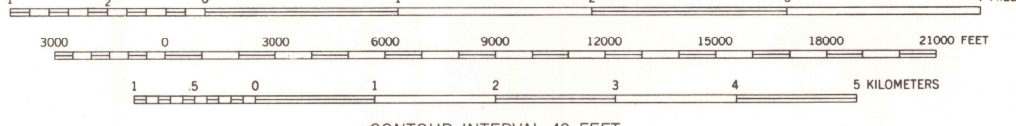
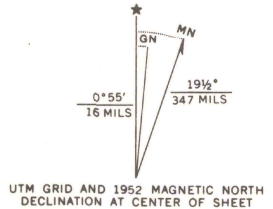
Dashed land lines indicate approximate locations

Brown pattern indicates lava flows

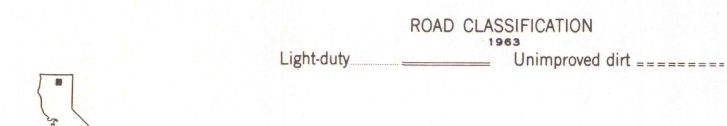
in which contours are generalized

1000-meter Universal Transverse Mercator grid ticks,

zone 10, shown in blue



CONTOUR INTERVAL 40 FEET
DATUM IS MEAN SEA LEVEL



MEDICINE LAKE, CALIF.
N4130-W12130/15

1952

AMS 1667 II-SERIES V795

This map was reproduced by electronic color scanning of an earlier printing (1971).

THIS MAP COMPLIES WITH NATIONAL MAP ACCURACY STANDARDS
FOR SALE BY U. S. GEOLOGICAL SURVEY, DENVER, COLORADO 80225 OR WASHINGTON, D. C. 20242
A FOLDER DESCRIBING TOPOGRAPHIC MAPS AND SYMBOLS IS AVAILABLE ON REQUEST

JUL 29 1982

Z500