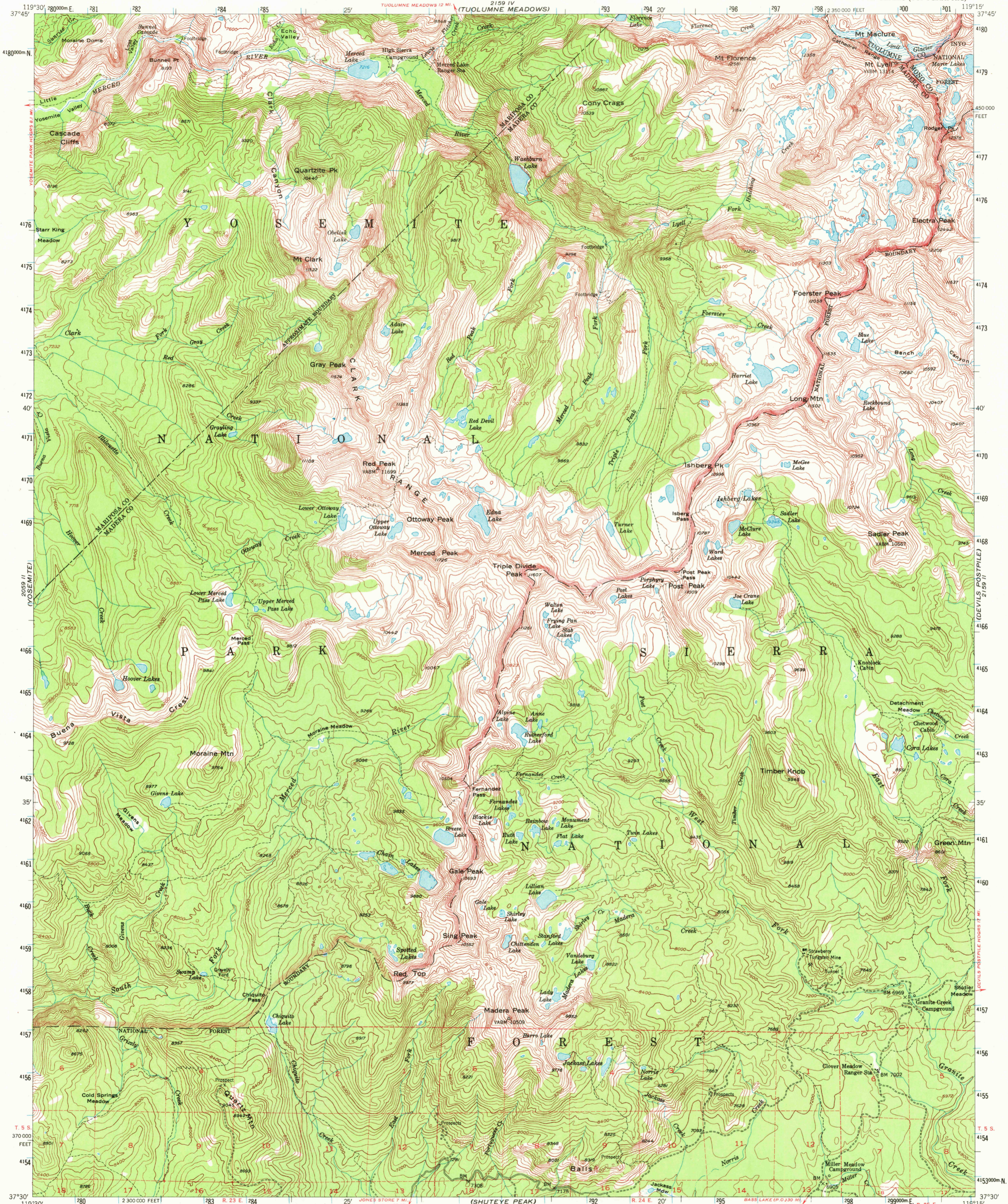


2059 I (Yosemite Reservoir)

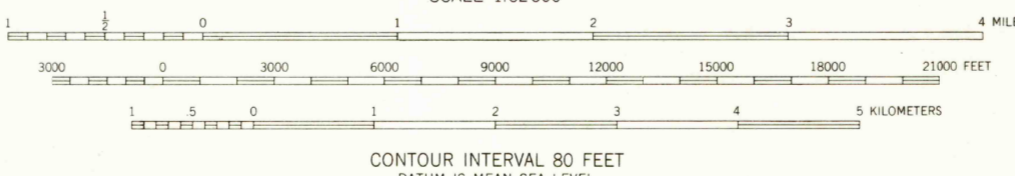
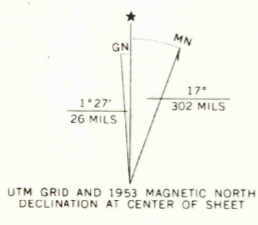
2159 I (Mono Craters)

UNITED STATES DEPARTMENT OF THE INTERIOR GEOLOGICAL SURVEY

MERCED PEAK QUADRANGLE CALIFORNIA 15 MINUTE SERIES (TOPOGRAPHIC)



Mapped, edited, and published by the Geological Survey Control by USGS Topography from aerial photographs by multiplex methods Aerial photographs taken 1951. Field check 1953 Polyconic projection. 1927 North American datum 10,000-foot grid based on California coordinate system, zone 3 Dashed land lines indicate approximate locations Unchecked elevations are shown in brown 1000-meter Universal Transverse Mercator grid ticks, zone 11, shown in blue



CONTOUR INTERVAL 80 FEET DATUM IS MEAN SEA LEVEL



USGS HISTORICAL FILE TOPOGRAPHIC DIVISION

MERCED PEAK, CALIF. N 3730-W 11915/15 1953 AMS 2159 III-SERIES V 795

FEB 14 1972 36060

THIS MAP COMPLIES WITH NATIONAL MAP ACCURACY STANDARDS FOR SALE BY U. S. GEOLOGICAL SURVEY, DENVER, COLORADO 80225 OR WASHINGTON, D. C. 20242 A FOLDER DESCRIBING TOPOGRAPHIC MAPS AND SYMBOLS IS AVAILABLE ON REQUEST