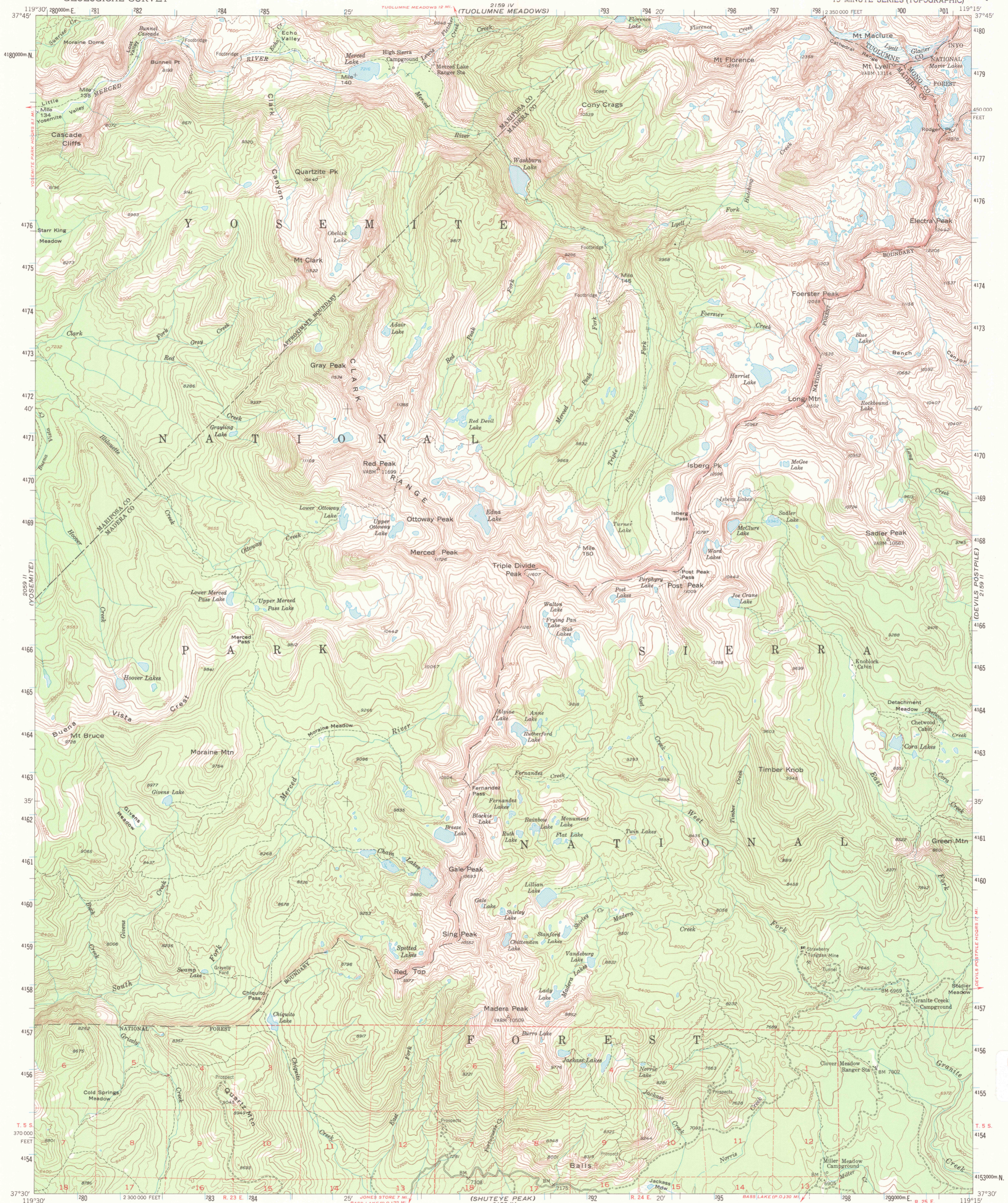


2009
CHECK FLETCHY
RESERVOIR

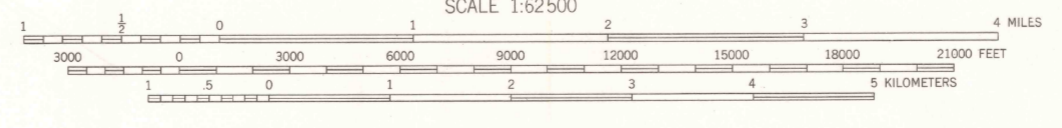
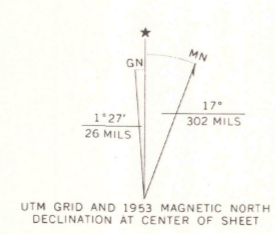
2009
MONO CRATERS

UNITED STATES
DEPARTMENT OF THE INTERIOR
GEOLOGICAL SURVEY

MERCED PEAK QUADRANGLE
CALIFORNIA
15 MINUTE SERIES (TOPOGRAPHIC)



Mapped, edited, and published by the Geological Survey
Control by USGS
Topography from aerial photographs by multiplex methods
Aerial photographs taken 1951. Field check 1953
Polyconic projection. 1927 North American datum
10,000-foot grid based on California coordinate system, zone 3
Dashed land lines indicate approximate locations
Unchecked elevations are shown in brown
1000-meter Universal Transverse Mercator grid ticks,
zone 11, shown in blue



ROAD CLASSIFICATION
Light-duty ——— Unimproved dirt - - - - -

MERCED PEAK, CALIF.
N 3730—W 11915/15

1953
AMS 2159 III—SERIES V795

THIS MAP COMPLIES WITH NATIONAL MAP ACCURACY STANDARDS
FOR SALE BY U. S. GEOLOGICAL SURVEY, DENVER, COLORADO 80225, OR RESTON, VIRGINIA 22092
A FOLDER DESCRIBING TOPOGRAPHIC MAPS AND SYMBOLS IS AVAILABLE ON REQUEST

USGS Library
Reston, VA.
Topo Archive

2009
BASS LAKE

2009
WASSER PEAK