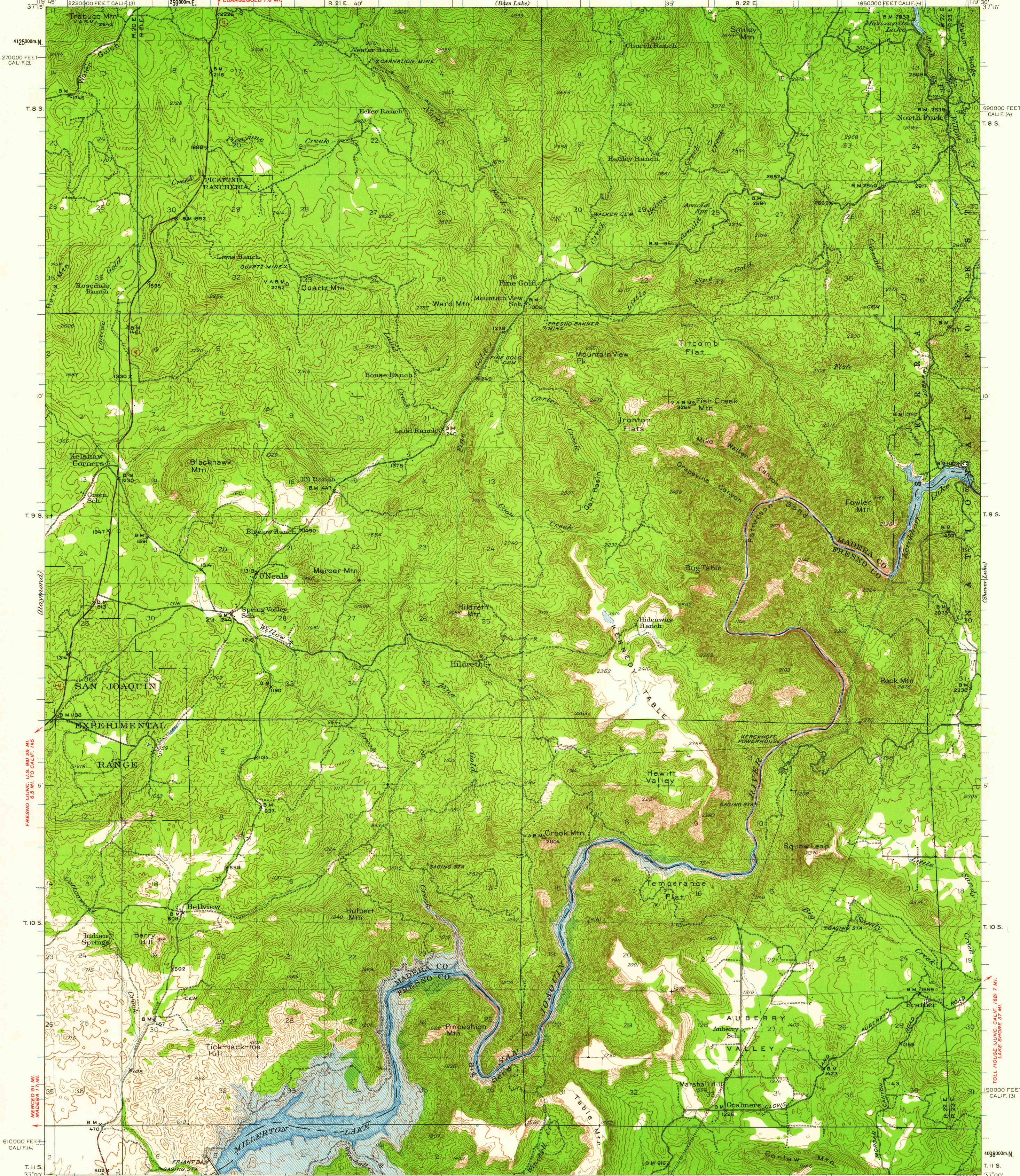


UNITED STATES
DEPARTMENT OF THE ARMY
CORPS OF ENGINEERS

12 MI. TO CALIF. 41
WISHON 3.9 MI.
CALIFORNIA
MILLERTON LAKE QUADRANGLE
15-MINUTE SERIES
1850000 FEET CALIF. (4)

UNITED STATES
DEPARTMENT OF THE INTERIOR
GEOLOGICAL SURVEY



Map of Sulphur Springs quadrangle showing part of this area on scale 1:24 000, contour interval 5 feet is available

SCALE 1:62 500

CONTOUR INTERVAL 50 FEET
DATUM IS MEAN SEA LEVEL

ROAD CLASSIFICATION
Medium-duty ——— Light-duty ———
Unimproved dirt ———
State Route ○

USGS
Historical File
Topographic Division

U.S.G.S.
FILE COPY
TOPOGRAPHIC DIVISION

MILLERTON LAKE, CALIF.
N 3700-W 11930/15
1942

FOR SALE BY U. S. GEOLOGICAL SURVEY, DENVER 25, COLORADO OR WASHINGTON 25, D. C.
A FOLDER DESCRIBING TOPOGRAPHIC MAPS AND SYMBOLS IS AVAILABLE ON REQUEST

Polyconic projection. 1927 North American datum
10,000-foot grids based on California (3) and
California (4) rectangular coordinate systems
1000-meter Universal Transverse Mercator grid ticks,
zone 11, shown in blue
Certain land lines are omitted because of
insufficient data. All recovered corners are shown

AUG 13 1950
2020