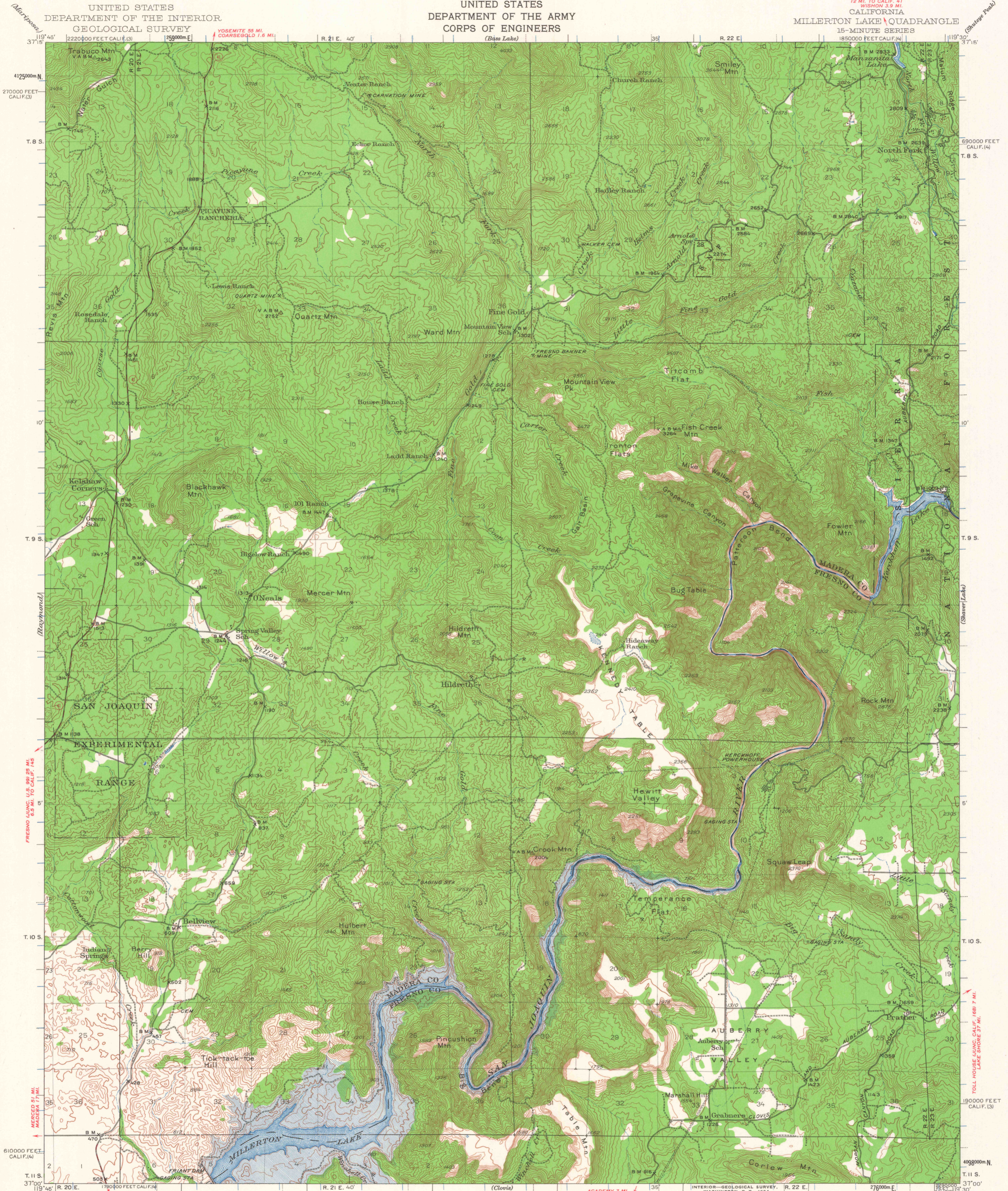


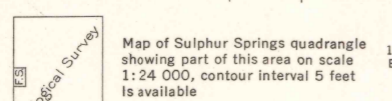
UNITED STATES  
DEPARTMENT OF THE INTERIOR  
GEOLOGICAL SURVEY

UNITED STATES  
DEPARTMENT OF THE ARMY  
CORPS OF ENGINEERS

12 MI. TO CALIF. 41  
WISCONSIN 3.9 MI.  
CALIFORNIA  
MILLERTON LAKE QUADRANGLE  
15-MINUTE SERIES  
1850000 FEET CALIF. (4)



Map of Sulphur Springs quadrangle showing part of this area on scale 1:24 000, contour interval 5 feet is available



ROAD CLASSIFICATION  
Medium-duty — Light-duty  
Unimproved dirt —  
State Route

CONTOUR INTERVAL 50 FEET  
DATUM IS MEAN SEA LEVEL

USGS  
Historical File  
Topographic Division  
MILLERTON LAKE, CALIF.  
N 3700—W 11930/15  
1942

Polyconic projection. 1927 North American datum  
10,000-foot grids based on California (3) and  
California (4) rectangular coordinate systems  
1000-meter Universal Transverse Mercator grid ticks,  
zone 11, shown in blue

Certain land lines are omitted because of  
insufficient data. All recovered corners are shown

4715

MAY 5 1964