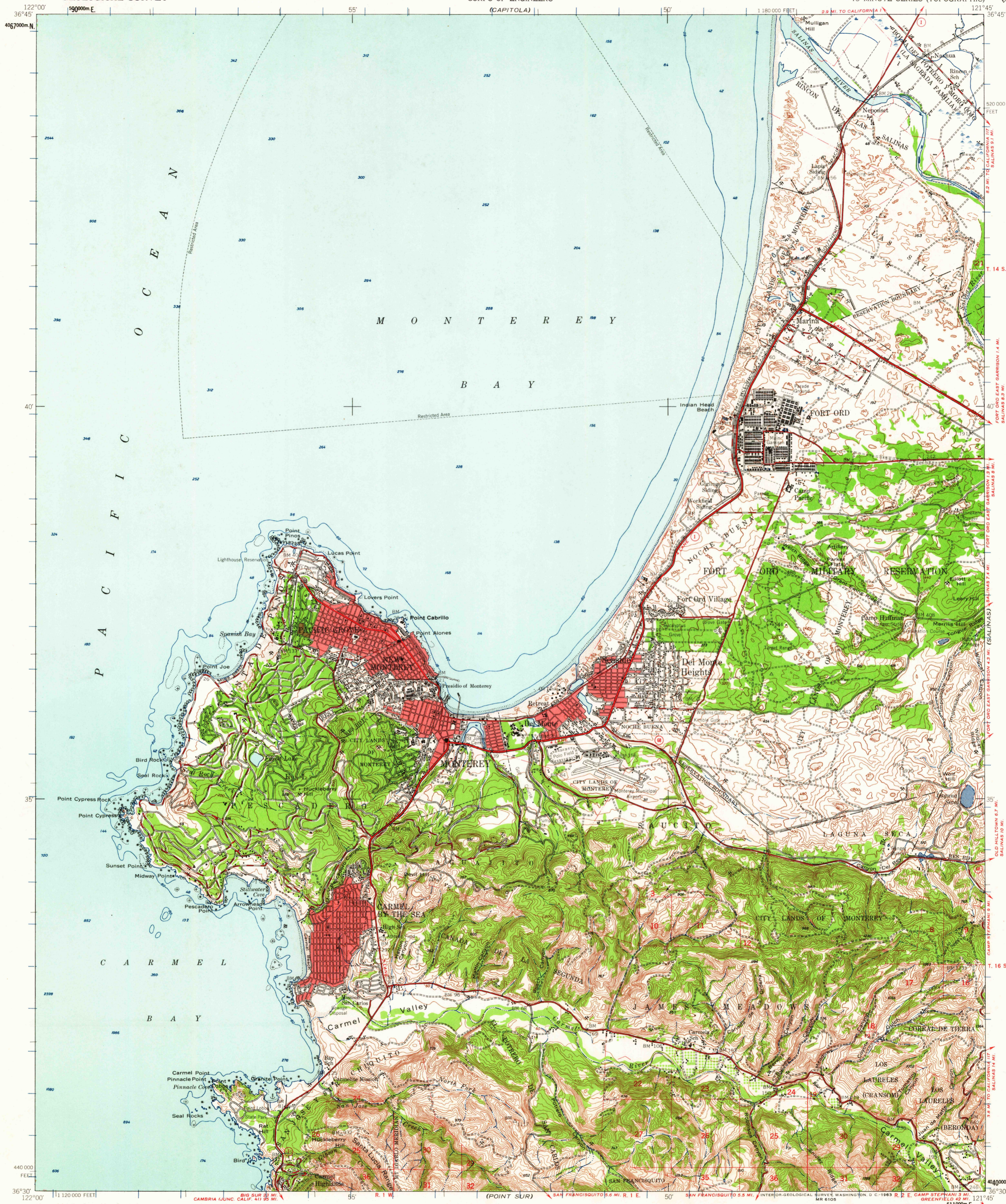


(SAN JUAN BAUTISTA)



Mapped by the Army Map Service
Published for civil use by the Geological Survey

Control by USGS, USC&GS, and USCE

Topography from aerial photographs by photogrammetric methods
Aerial photographs taken 1945. Field check 1947

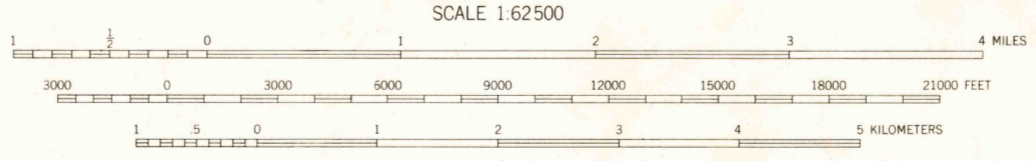
Coastal hydrography from USC&GS charts 5403 and 5476

Polyconic projection. 1927 North American datum
10,000-foot grid based on California coordinate system,
zone 4

Red tint indicates areas in which only
landmark buildings are shown

No distinction is made between dwellings, barns,
commercial and industrial buildings

1000-meter Universal Transverse Mercator grid ticks,
zone 10, shown in blue



CONTOUR INTERVAL 40 FEET
DASHED LINES REPRESENT HALF-INTERVAL CONTOURS
DATUM IS MEAN SEA LEVEL
DEPTH CURVES AND SOUNDINGS IN FEET-DATUM IS MEAN LOWER LOW WATER
SHORELINE SHOWN REPRESENTS THE APPROXIMATE LINE OF MEAN HIGH WATER
THE AVERAGE RANGE OF TIDE IS APPROXIMATELY 5 FEET

THIS MAP COMPLIES WITH NATIONAL MAP ACCURACY STANDARDS
FOR SALE BY U. S. GEOLOGICAL SURVEY, DENVER 25, COLORADO OR WASHINGTON 25, D. C.
A FOLDER DESCRIBING TOPOGRAPHIC MAPS AND SYMBOLS IS AVAILABLE ON REQUEST

ROAD CLASSIFICATION

Heavy-duty	Light-duty
Medium-duty	Unimproved dirt

State Route

This area is also covered by 1:24,000 scale maps
of Marina, Monterey, and Seaside 7.5 minute
quadrangles.

USGS
Historical File
Topographic Division

MONTEREY, CALIF.
N3630-W12145/15

1947

FILE COPY
TOPOGRAPHIC DIVISION

JUN 12 1947