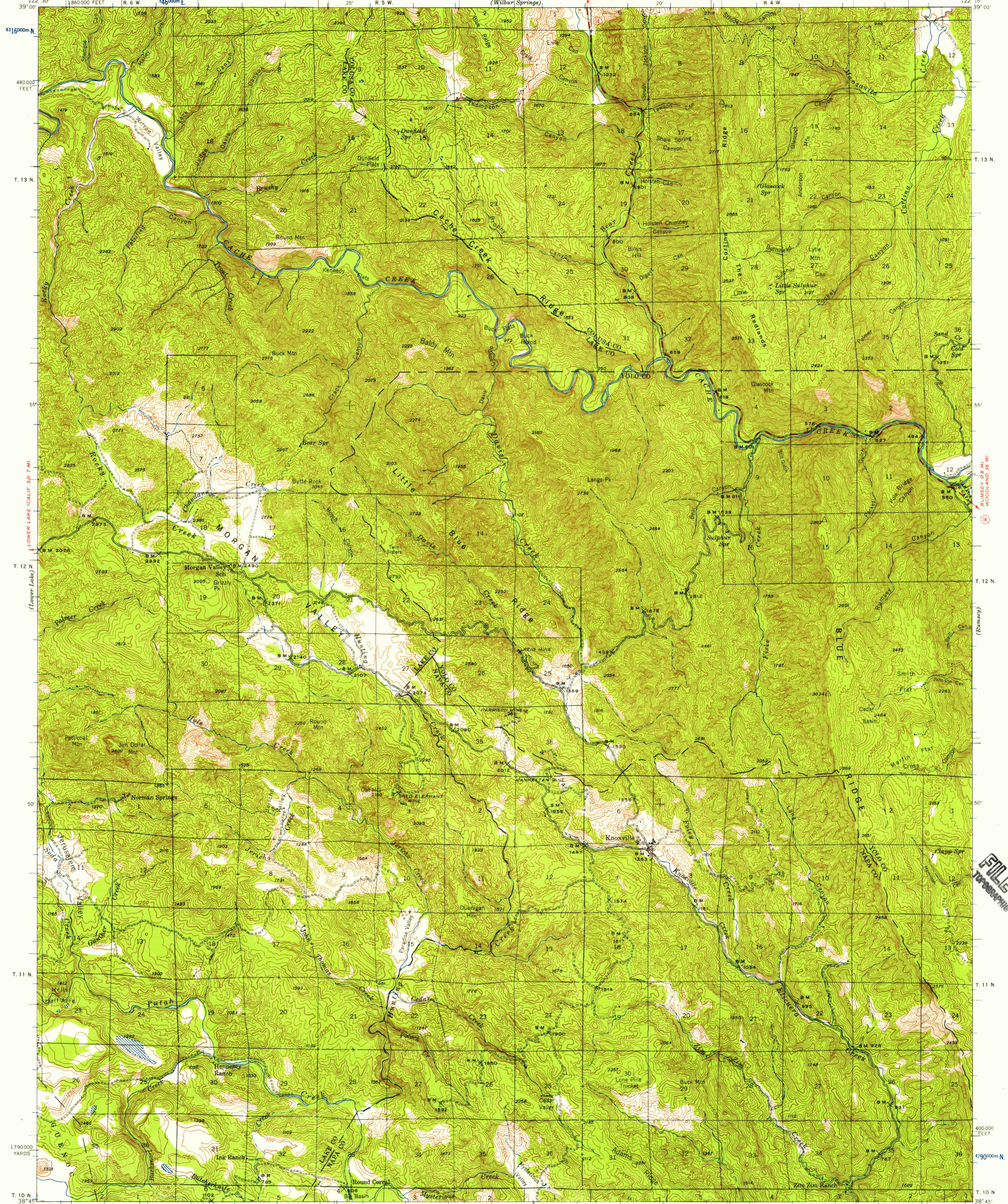


UNITED STATES  
DEPARTMENT OF THE ARMY  
CORPS OF ENGINEERS

CALIFORNIA  
MORGAN VALLEY QUADRANGLE  
15-MINUTE SERIES

UNITED STATES  
DEPARTMENT OF THE INTERIOR  
GEOLOGICAL SURVEY



Mapped by the Geological Survey 1942-1943

1000-meter Universal Transverse Mercator grid ticks, zone 10, shown in blue

TRUE NORTH  
MAGNETIC NORTH

APPROXIMATE MEAN DECLINATION, 1948

SCALE 1:62500

INTERIOR-GEOLOGICAL SURVEY, WASHINGTON, D. C. - 1957. MONTICELLO RES. 1.7 MI.

ROAD CLASSIFICATION

Heavy-duty	Light-duty
Medium-duty	Unimproved dirt

U.S. Route      State Route

MORGAN VALLEY, CALIF.

N 3845-W 12215/15  
USGS 1943  
Historical File  
Topographic Division

FOR SALE BY U. S. GEOLOGICAL SURVEY, DENVER 2, COLORADO OR WASHINGTON 25, D. C.  
A FOLDER DESCRIBING TOPOGRAPHIC MAPS AND SYMBOLS IS AVAILABLE ON REQUEST

JUN - 3 195

2905