

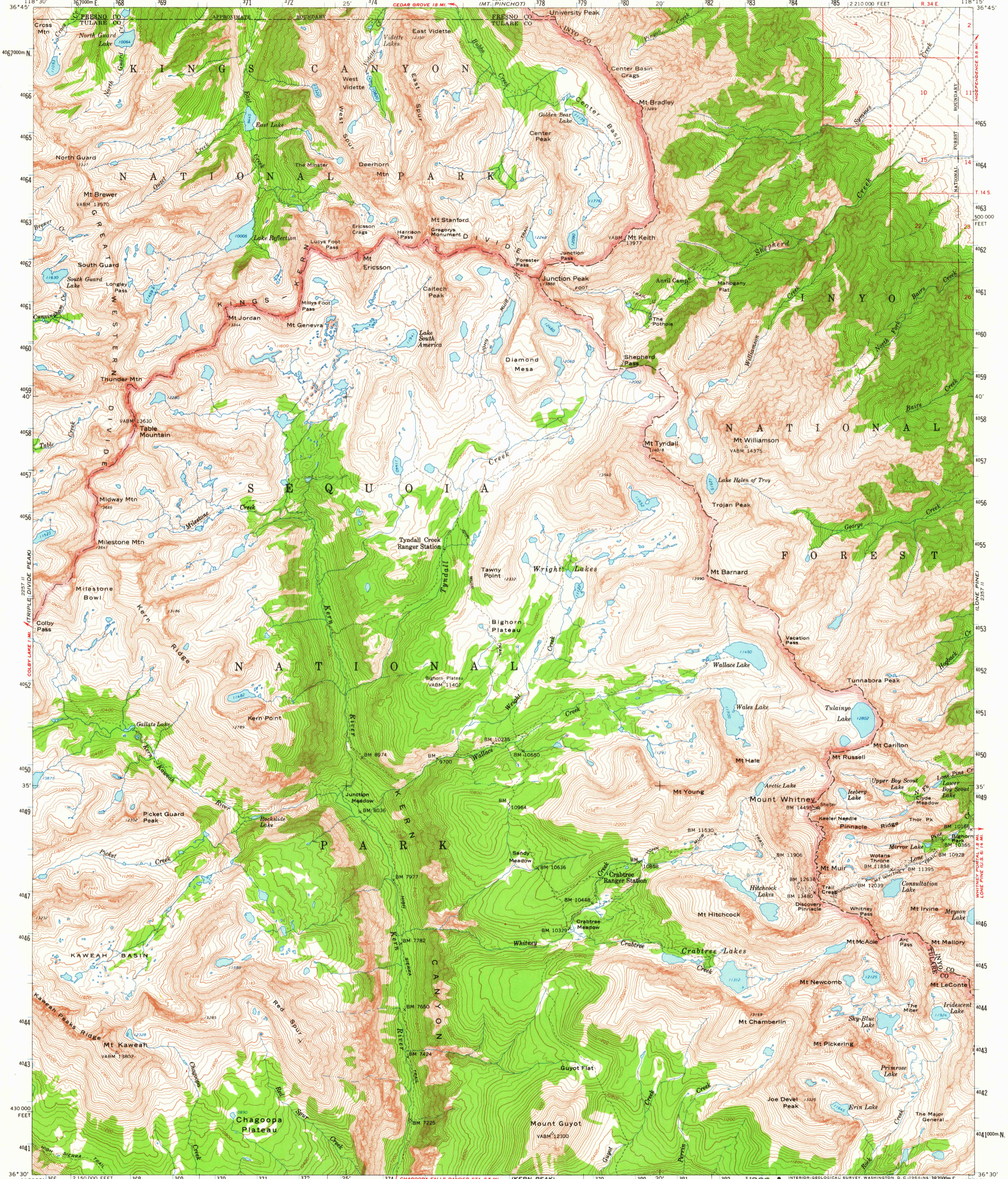
MINERAL KING 2286 I

2287 I INDEPENDENCE

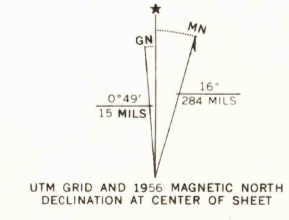
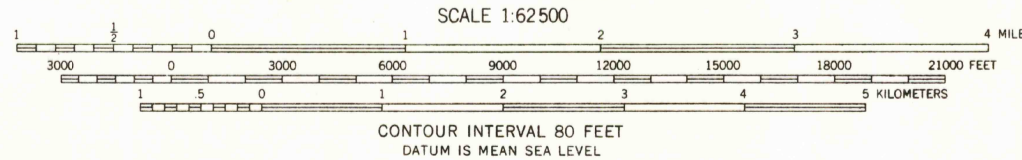
UNITED STATES
DEPARTMENT OF THE INTERIOR
GEOLOGICAL SURVEY

STATE OF CALIFORNIA
REPRESENTED BY THE
DIRECTOR OF WATER RESOURCES

MOUNT WHITNEY QUADRANGLE
CALIFORNIA
15 MINUTE SERIES (TOPOGRAPHIC)



Mapped, edited, and published by the Geological Survey
Control by USGS and USC&GS
Topography from aerial photographs by photogrammetric methods
Aerial photographs taken 1955. Advance field check 1956
Polyconic projection. 1927 North American datum
10,000-foot grid based on California coordinate system, zone 4
1000-meter Universal Transverse Mercator grid ticks,
zone 11, shown in blue
Land lines unsurveyed in T. 13 S.-Rs. 32 and 33 E., T. 14 S.-R. 33 E.,
T. 15 and 16 S.-Rs. 33 and 34 E., and parts of T. 14 S.-R. 34 E.
Land lines omitted in T. 14, 15, and 16 S.-R. 32 E.
because of insufficient data
Unchecked elevations are shown in brown and blue



THIS MAP COMPLIES WITH NATIONAL MAP ACCURACY STANDARDS
FOR SALE BY U. S. GEOLOGICAL SURVEY, DENVER 25, COLORADO OR WASHINGTON 25, D. C.
A FOLDER DESCRIBING TOPOGRAPHIC MAPS AND SYMBOLS IS AVAILABLE ON REQUEST

USGS
Historical File
Topographic Division



U.S.G.S.
MOUNT WHITNEY, CALIF.
N3630-W11815/15
1956
AMS 2357 III-SERIES V795

ROAD CLASSIFICATION
Unimproved dirt - - - - - Trails

OCT 14 1964

23,295