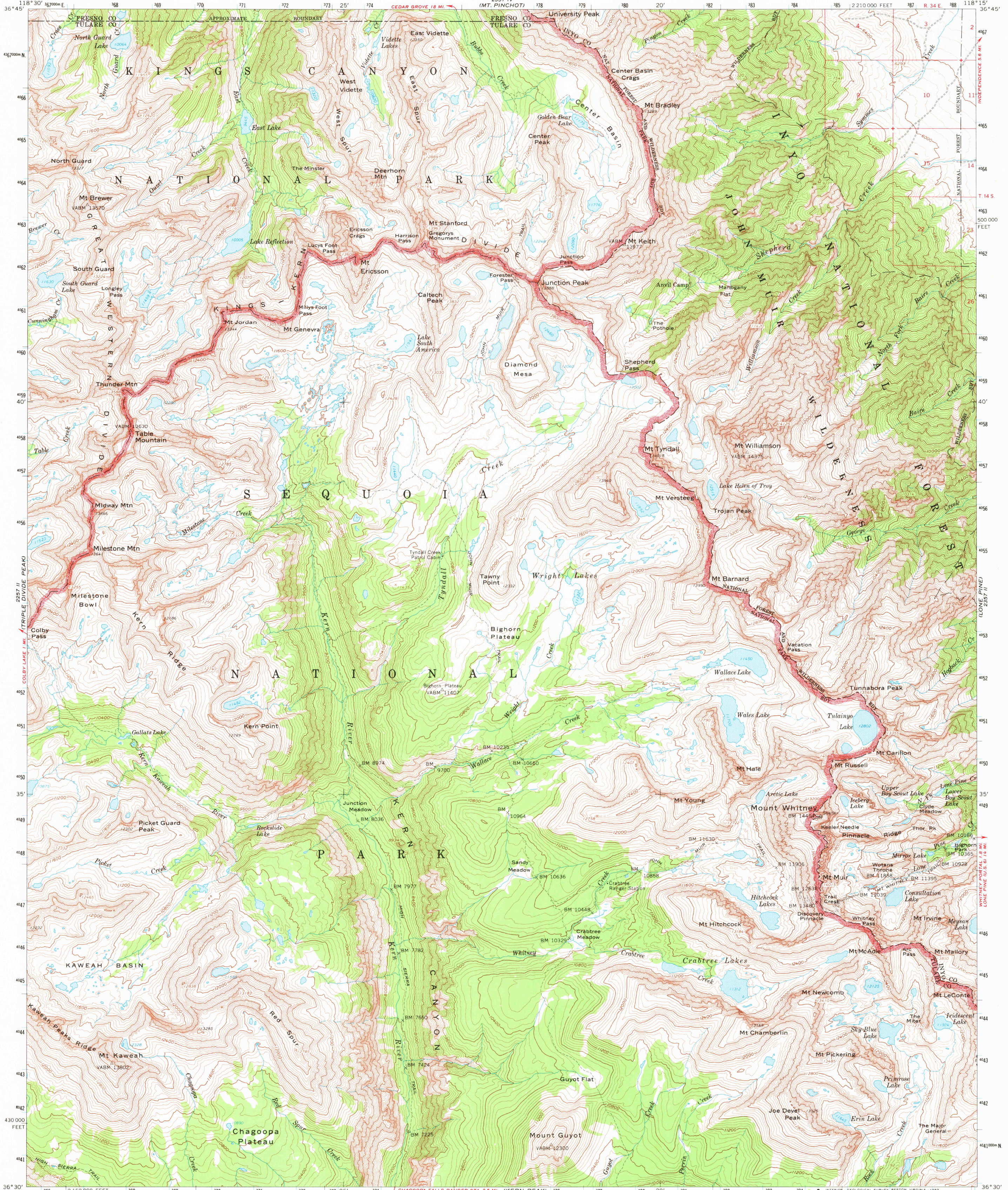
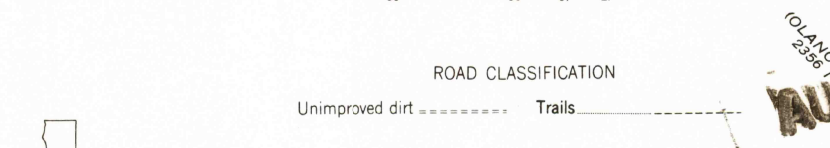
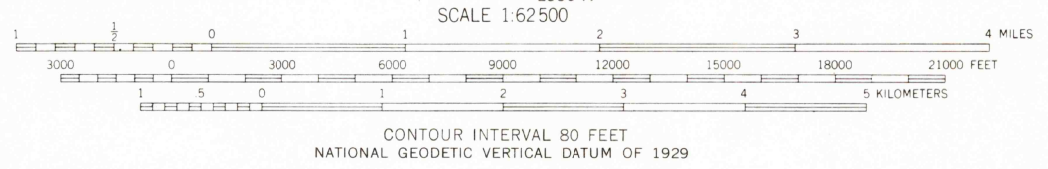
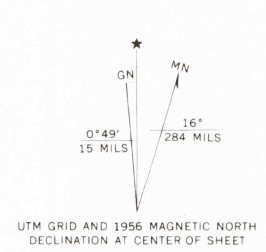


UNITED STATES
DEPARTMENT OF THE INTERIOR
GEOLOGICAL SURVEY

MOUNT WHITNEY QUADRANGLE
CALIFORNIA
15 MINUTE SERIES (TOPOGRAPHIC)



Mapped, edited, and published by the Geological Survey in cooperation with California Department of Water Resources
Control by USGS and USC&GS
Topography by photogrammetric methods from aerial photographs taken 1955. Field checked 1956
Limited revision in 1967
Polyconic projection. 1927 North American datum
10,000-foot grid based on California coordinate system, zone 4
1000-meter Universal Transverse Mercator grid ticks, zone 11, shown in blue
To place on the predicted North American Datum 1983 move the projection lines 8 meters north and 84 meters east
Where omitted, land lines have not been established or are not shown because of insufficient data
There may be private inholdings within the boundaries of the National or State reservations shown on this map



THIS MAP COMPLIES WITH NATIONAL MAP ACCURACY STANDARDS
FOR SALE BY U.S. GEOLOGICAL SURVEY, DENVER, COLORADO 80225, OR RESTON, VIRGINIA 22092
A FOLDER DESCRIBING TOPOGRAPHIC MAPS AND SYMBOLS IS AVAILABLE ON REQUEST

MOUNT WHITNEY, CALIF.
N 3630—W 11815/15
1956
LIMITED REVISION 1967
DMA 2357 III—SERIES V795

AUG 25 1967