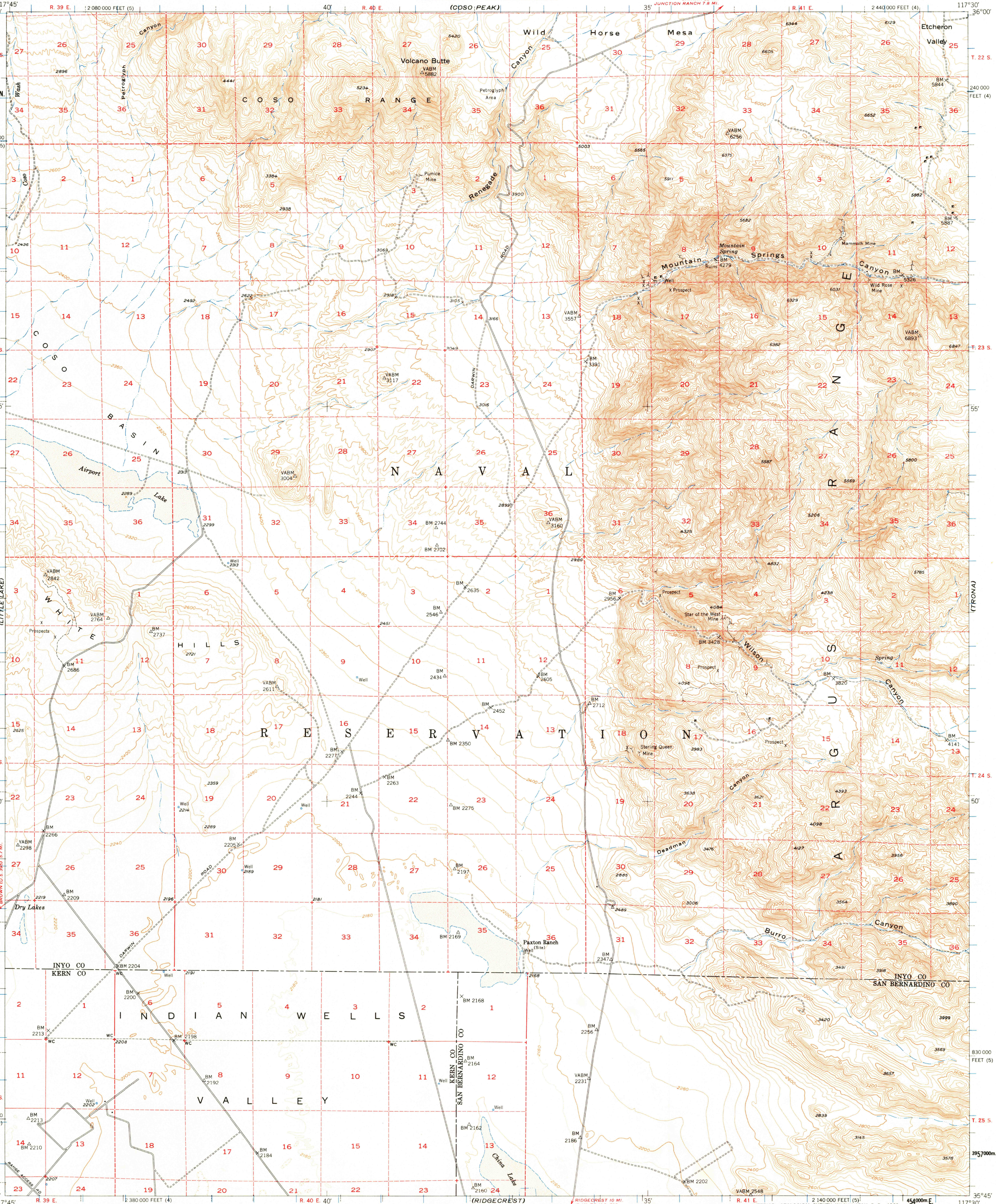


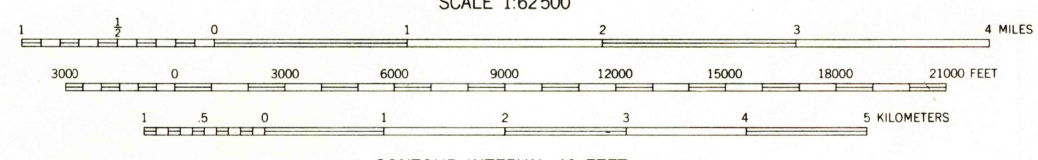
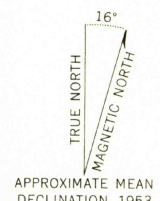
UNITED STATES
DEPARTMENT OF THE INTERIOR
433000m E. GEOLOGICAL SURVEY

STATE OF CALIFORNIA
DEPARTMENT OF WATER RESOURCES
(CDSO, PEAK)

MOUNTAIN SPRINGS CANYON QUADRANGLE
CALIFORNIA
15 MINUTE SERIES (TOPOGRAPHIC)



Mapped, edited, and published by the Geological Survey
Control by USGS, USC&GS, and U.S. Navy
Topography from aerial photographs by multiplex methods
and by plane-table surveys 1953. Aerial photographs taken 1948
Polyconic projection. 1927 North American datum
10,000-foot grids based on California coordinate system,
zones 4 and 5
Dashed land lines indicate approximate locations
1000-meter Universal Transverse Mercator grid ticks,
zone 11, shown in blue



CONTOUR INTERVAL 40 FEET
DOTTED LINES REPRESENT HALF-INTERVAL CONTOURS
DATUM IS MEAN SEA LEVEL



ROAD CLASSIFICATION
1963
Light-duty ————
Unimproved dirt - - - - -

USGS MOUNTAIN SPRINGS CANYON, CALIF.
Historical File
Topographic Division
N3545-W11730/15
1953

THIS MAP COMPLIES WITH NATIONAL MAP ACCURACY STANDARDS
FOR SALE BY U.S. GEOLOGICAL SURVEY, DENVER 25, COLORADO OR WASHINGTON 25, D.C.
A FOLDER DESCRIBING TOPOGRAPHIC MAPS AND SYMBOLS IS AVAILABLE ON REQUEST

AUG 20 1963

3270