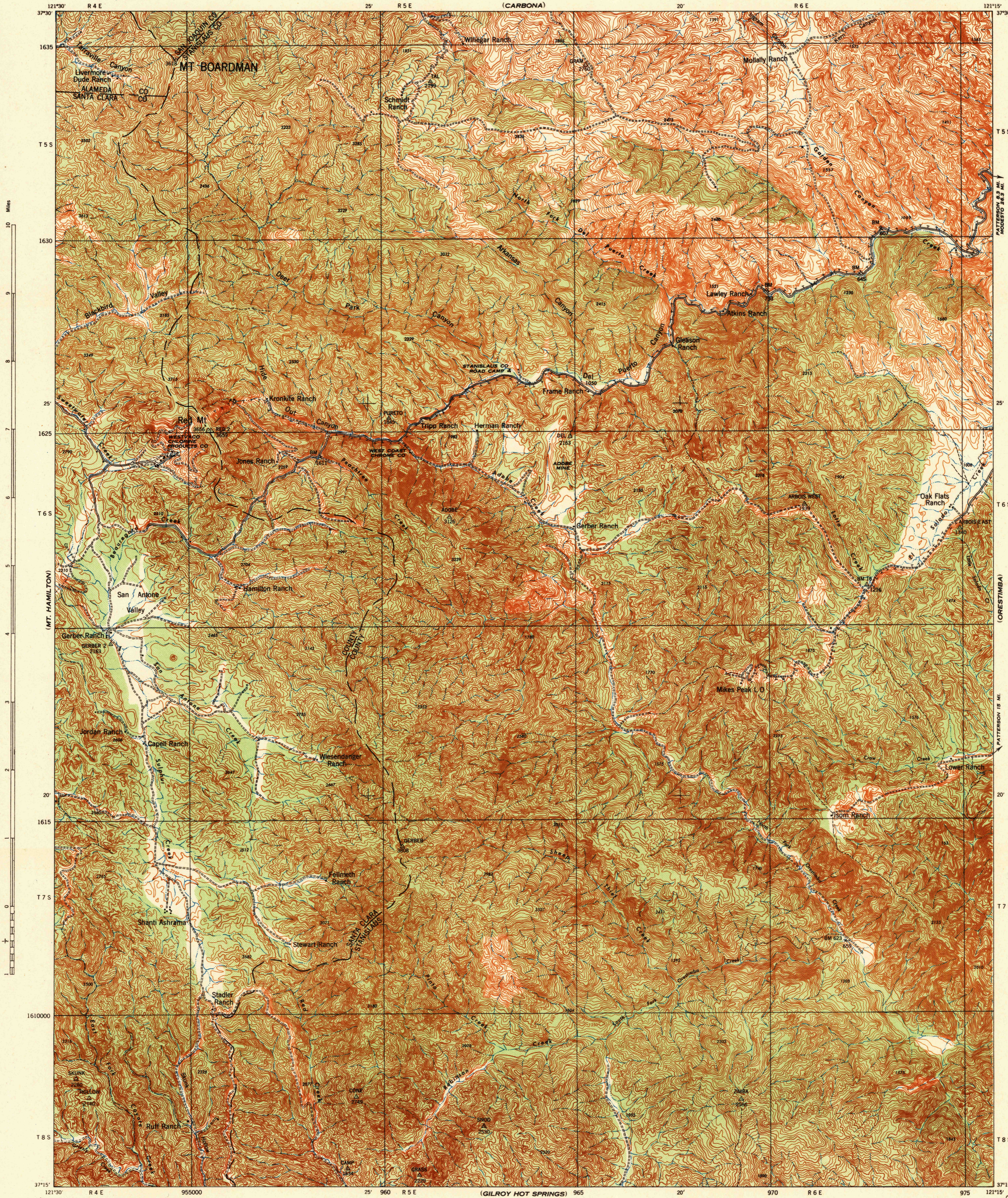


Advance edition  
 Subject to correction

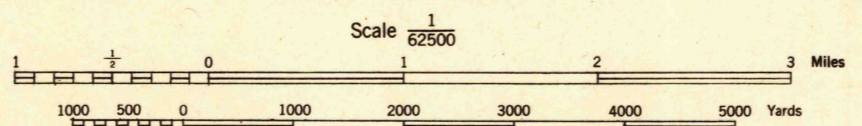
(MOJESTO WEST)



Prepared under the direction of the Chief of Engineers, U.S. Army, 1941.  
 Horizontal control by 29th Engineers, U.S. Army, 1939 and  
 U.S. Coast and Geodetic Survey, 1934.  
 Vertical control by 29th Engineers, U.S. Army, 1939, U.S. Coast and  
 Geodetic Survey, 1934 and U.S. Geological Survey, 1935.  
 Topography by 29th Engineers, U.S. Army, 1940, using Multiplex Aero-pro-  
 jectors from Tander 1-3A aerial photography by 51st Observation Squadron,  
 U.S. Army, 1939.  
 Polyconic Projection, North American Datum 1927.

**ROAD CLASSIFICATION**

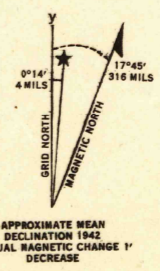
Dependable hard-surface, heavy-duty road. ——— U. S. Route 160  
 Loose surface graded, dry weather road. ——— U. S. Route 30  
 Secondary, hard-surface, all-weather road. ——— State Route 30  
 Unimproved road. - - - - - State Route 30  
 More than two lanes indicated by note along road with tick at point of change. 3 LANE 4 LANE



CONTOUR INTERVAL 50 FEET  
 DATUM IS MEAN SEA LEVEL

FIVE THOUSAND YARD GRID COMPUTED FROM "GRID SYSTEM FOR PROGRESSIVE MAPS  
 IN THE U. S. ZONE G, U. S. C. & G. S. SPECIAL PUBLICATION NO. 99  
 THE LAST THREE DIGITS OF THE GRID NUMBERS ARE OMITTED

NOTE: OFFICERS USING THIS MAP WILL MARK HEREON CORRECTIONS AND ADDITIONS WHICH COME  
 TO THEIR ATTENTION AND MAIL DIRECT TO "THE CHIEF OF ENGINEERS, WASHINGTON, D. C."



ARMY MAP SERVICE, U. S. ARMY, WASHINGTON, D. C. 17844  
 1942

U. S. G. S. USGS  
**FILE** Historical File  
 Topographic Division  
 Inspection and Filing

**MT. BOARDMAN, CALIF.**  
 N3715-W12115/15

(MORGAN HILL)

(PACIFIC PASS)