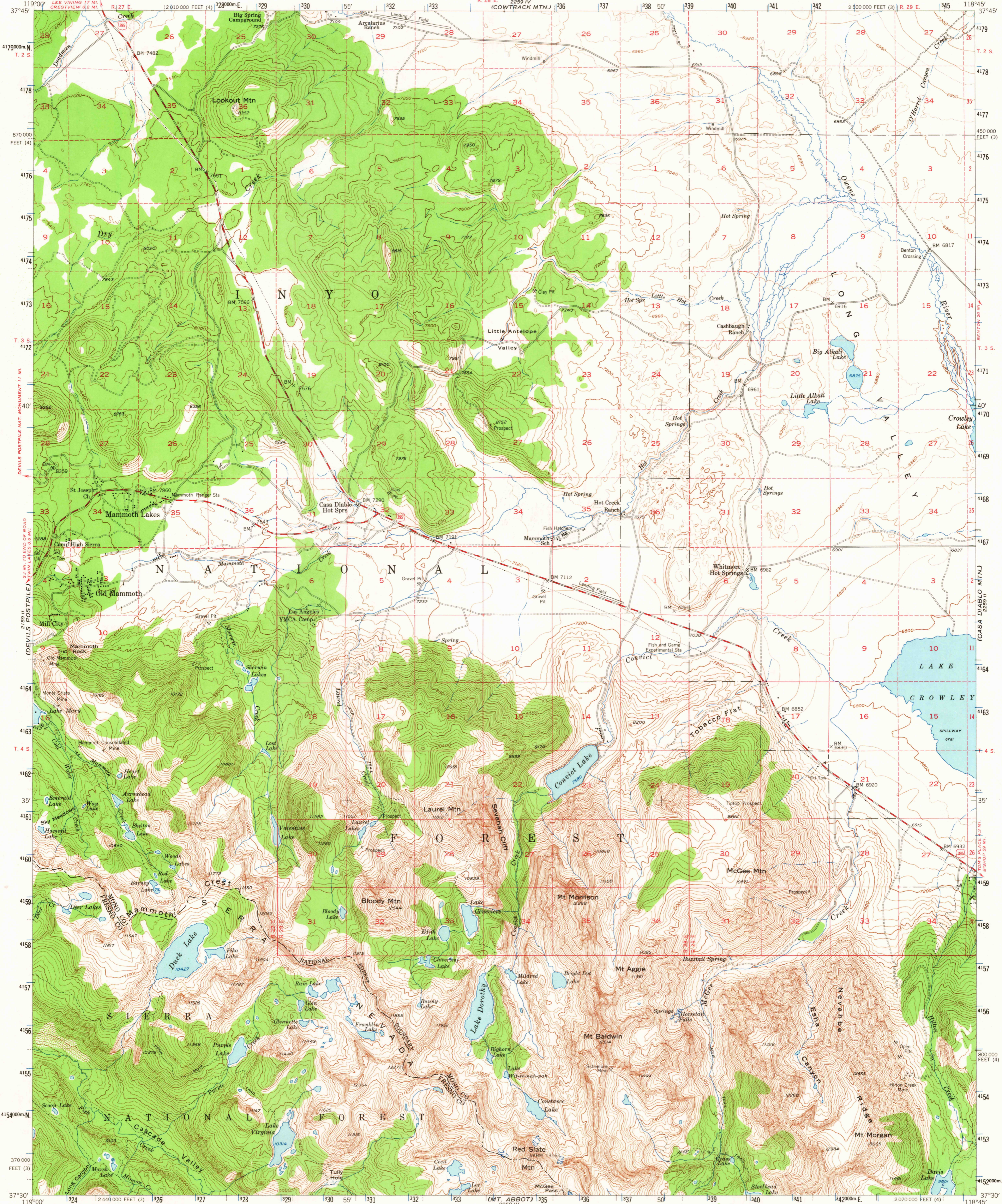
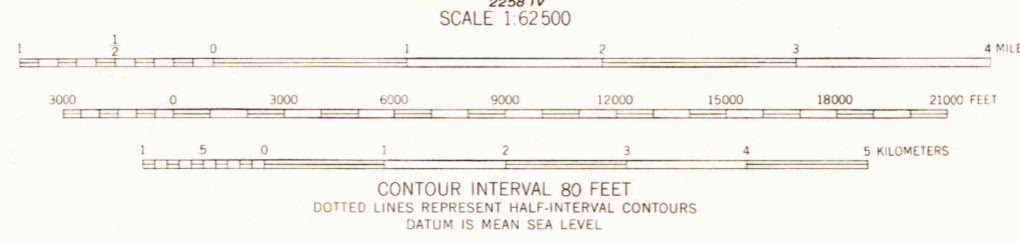
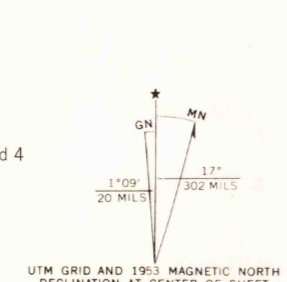


UNITED STATES
DEPARTMENT OF THE INTERIOR
GEOLOGICAL SURVEY

MT. MORRISON QUADRANGLE
CALIFORNIA
15 MINUTE SERIES (TOPOGRAPHIC)



Mapped, edited, and published by the Geological Survey
Control by USGS and USC&GS
Topography from aerial photographs by multiplex methods
and by plane-table surveys 1953. Aerial photographs taken 1951
Polyconic projection. 1927 North American datum
10,000-foot grids based on California coordinate system, zones 3 and 4
Dashed lines indicate approximate locations
1000-meter Universal Transverse Mercator grid ticks,
zone 11, shown in blue



USGS
Historical File
Topographic Division

ROAD CLASSIFICATION
Medium-duty ——— Light-duty ———
Unimproved dirt - - - - - U.S. Route

U.S.G.S. FILE COPY TOPOGRAPHIC DIVISION

QUADRANGLE LOCATION

A small map of California with a red dot indicating the location of the Mt. Morrison Quadrangle in the eastern part of the state.

THIS MAP COMPLIES WITH NATIONAL MAP ACCURACY STANDARDS
FOR SALE BY U. S. GEOLOGICAL SURVEY, DENVER, COLORADO 80225 OR WASHINGTON, D. C. 20242
A FOLDER DESCRIBING TOPOGRAPHIC MAPS AND SYMBOLS IS AVAILABLE ON REQUEST

MT. MORRISON, CALIF.
N3730-W11845/15
1953
AMS 2259 III-SERIES V795

37,450