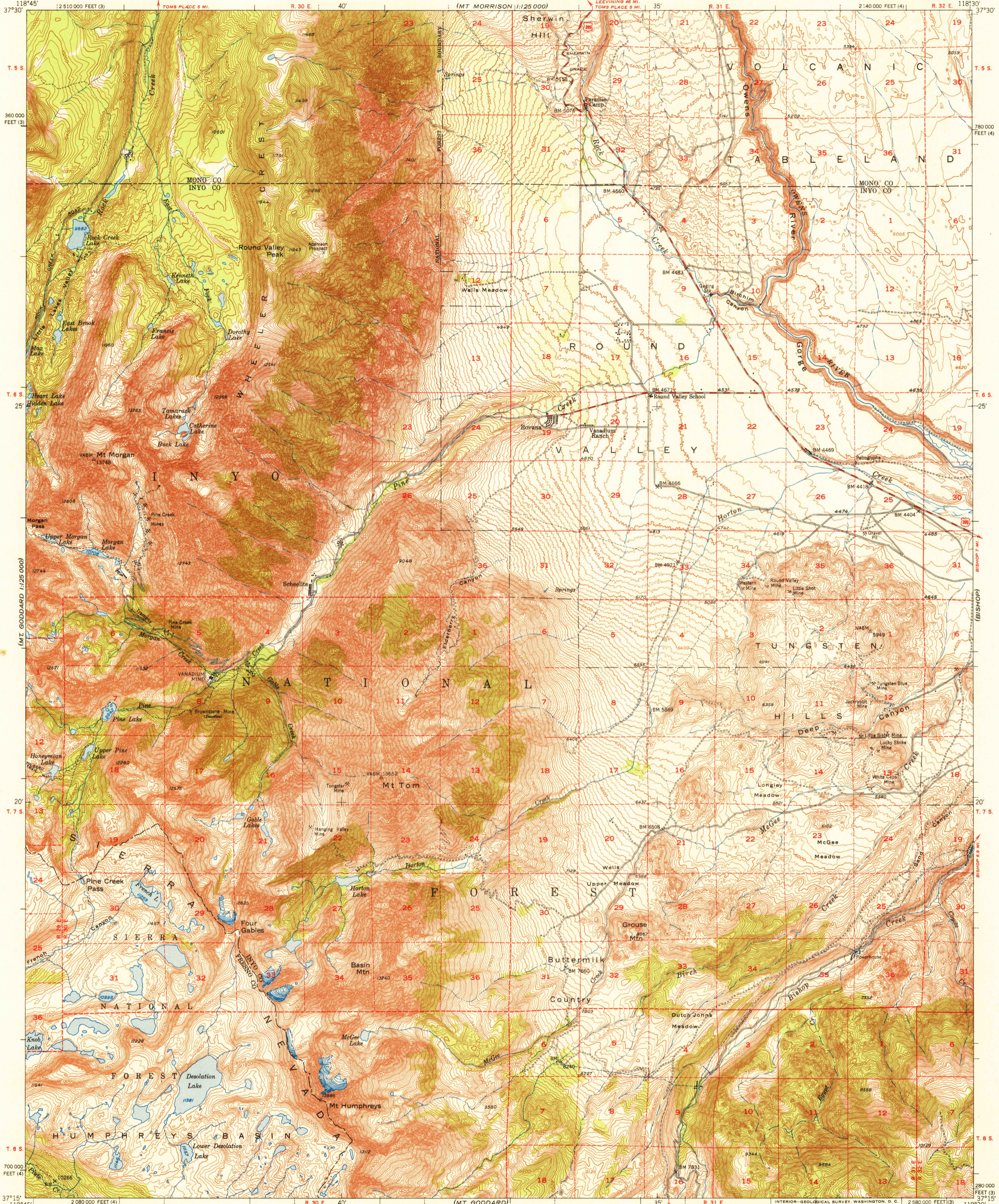


U.S.G.S. FILE COPY Inspection and Editing

UNITED STATES DEPARTMENT OF THE INTERIOR GEOLOGICAL SURVEY

STATE OF CALIFORNIA EARL WARREN, GOVERNOR C. H. PURCELL, DIRECTOR OF PUBLIC WORKS A. D. EDMONSTON, STATE ENGINEER

MT. TOM QUADRANGLE CALIFORNIA 15 MINUTE SERIES (TOPOGRAPHIC)



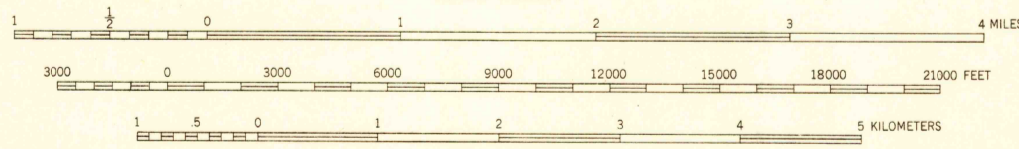
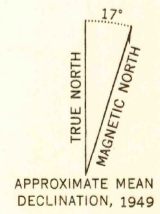
(MT. MORRISON) 1:25,000

(WHITE MOUNTAIN) 1:25,000

(MT. GODDARD) 1:25,000

(BIG PINE)

Mapped, edited, and published by the Geological Survey Control by USGS and USC&GS Topography from aerial photographs by multiplex methods Aerial photographs taken 1947. Field check 1949 Polyconic projection. 1927 North American datum 10,000-foot grid based on California coordinate system, zones 3 and 4 Dashed land lines indicate approximate location Unchecked elevations are shown in brown



CONTOUR INTERVAL 40 FEET DATUM IS MEAN SEA LEVEL

THIS MAP COMPLIES WITH NATIONAL MAP ACCURACY STANDARDS

FOR SALE BY U. S. GEOLOGICAL SURVEY, FEDERAL CENTER, DENVER, COLORADO OR WASHINGTON 25, D. C. A FOLDER DESCRIBING TOPOGRAPHIC MAPS AND SYMBOLS IS AVAILABLE ON REQUEST

USGS Historical File Topographic Division

ROAD CLASSIFICATION Heavy-duty... Medium-duty... U. S. Route State Route

U.S.G.S. FILE COPY Inspection and Editing

MT. TOM, CALIF. N3715-W11830/15 EDITION OF 1951