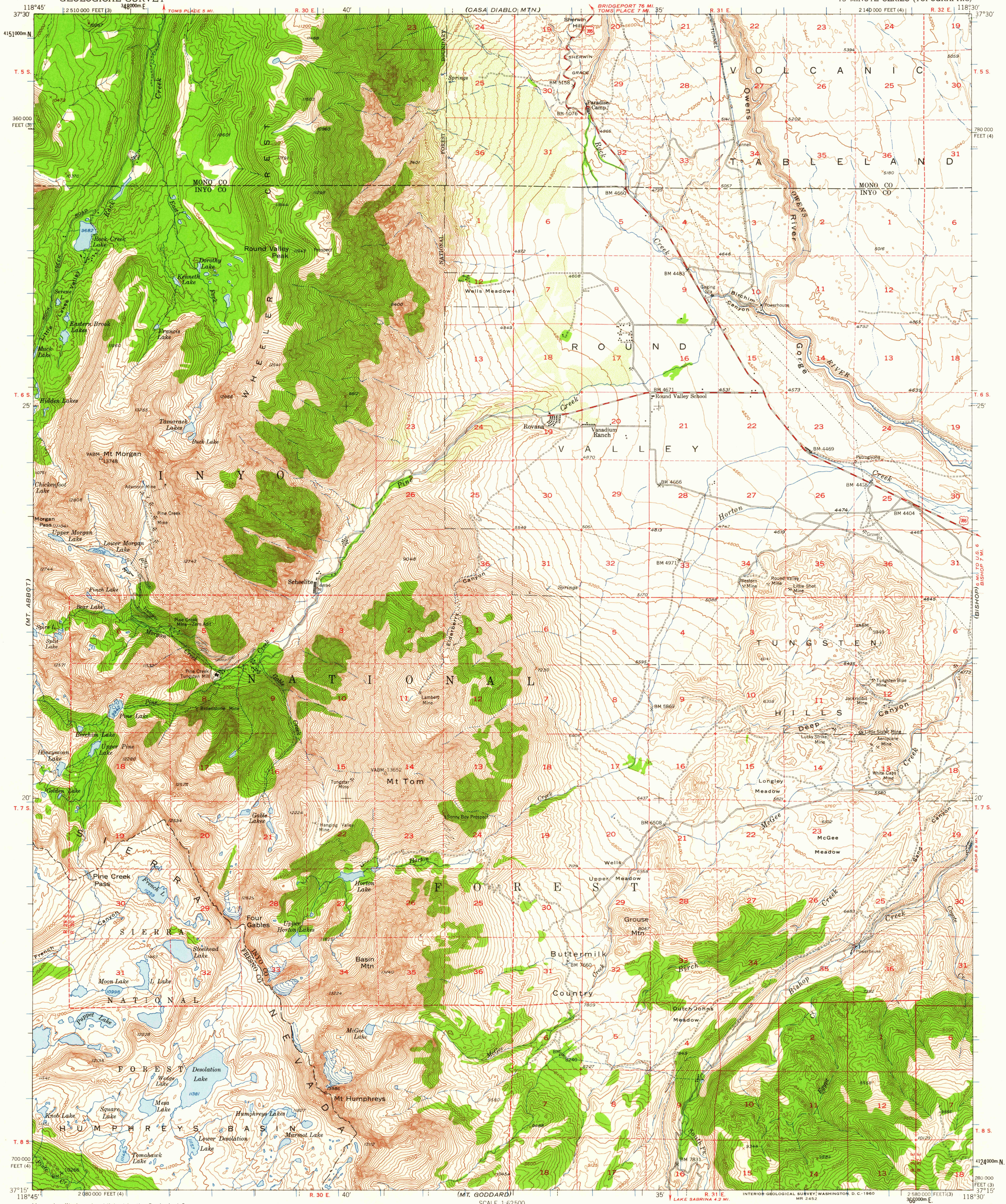


UNITED STATES  
DEPARTMENT OF THE INTERIOR  
GEOLOGICAL SURVEY

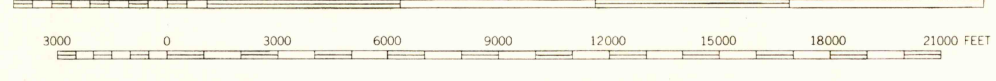
MT. TOM QUADRANGLE  
CALIFORNIA  
15 MINUTE SERIES (TOPOGRAPHIC)



Maped, edited, and published by the Geological Survey  
Control by USGS and USC&GS  
Topography from aerial photographs by multiplex methods  
Aerial photographs taken 1947. Field check 1949  
Polyconic projection. 1927 North American datum  
10,000-foot grids based on California coordinate  
system, zones 3 and 4  
Certain land lines are omitted because of insufficient data  
Dashed land lines indicate approximate location  
Unchecked elevations are shown in brown  
1000-meter Universal Transverse Mercator grid ticks,  
zone 11, shown in blue

APPROXIMATE MEAN  
DECLINATION, 1949

SCALE 1:62,500



CONTOUR INTERVAL 80 FEET  
DOTTED LINES REPRESENT HALF-INTERVAL CONTOURS  
DATUM IS MEAN SEA LEVEL

THIS MAP COMPLIES WITH NATIONAL MAP ACCURACY STANDARDS  
FOR SALE BY U. S. GEOLOGICAL SURVEY, DENVER 25, COLORADO OR WASHINGTON 25, D. C.  
A FOLDER DESCRIBING TOPOGRAPHIC MAPS AND SYMBOLS IS AVAILABLE ON REQUEST

ROAD CLASSIFICATION  
Medium-duty — Light-duty  
Unimproved dirt — U.S. Route

USGS  
Historical File  
Topographic Division

QUADRANGLE LOCATION

MT. TOM, CALIF.  
N3715—W11830/15

1949  
MINOR CORRECTIONS MADE 1954

AUG 22 1960  
573