

CAJON I:125,000

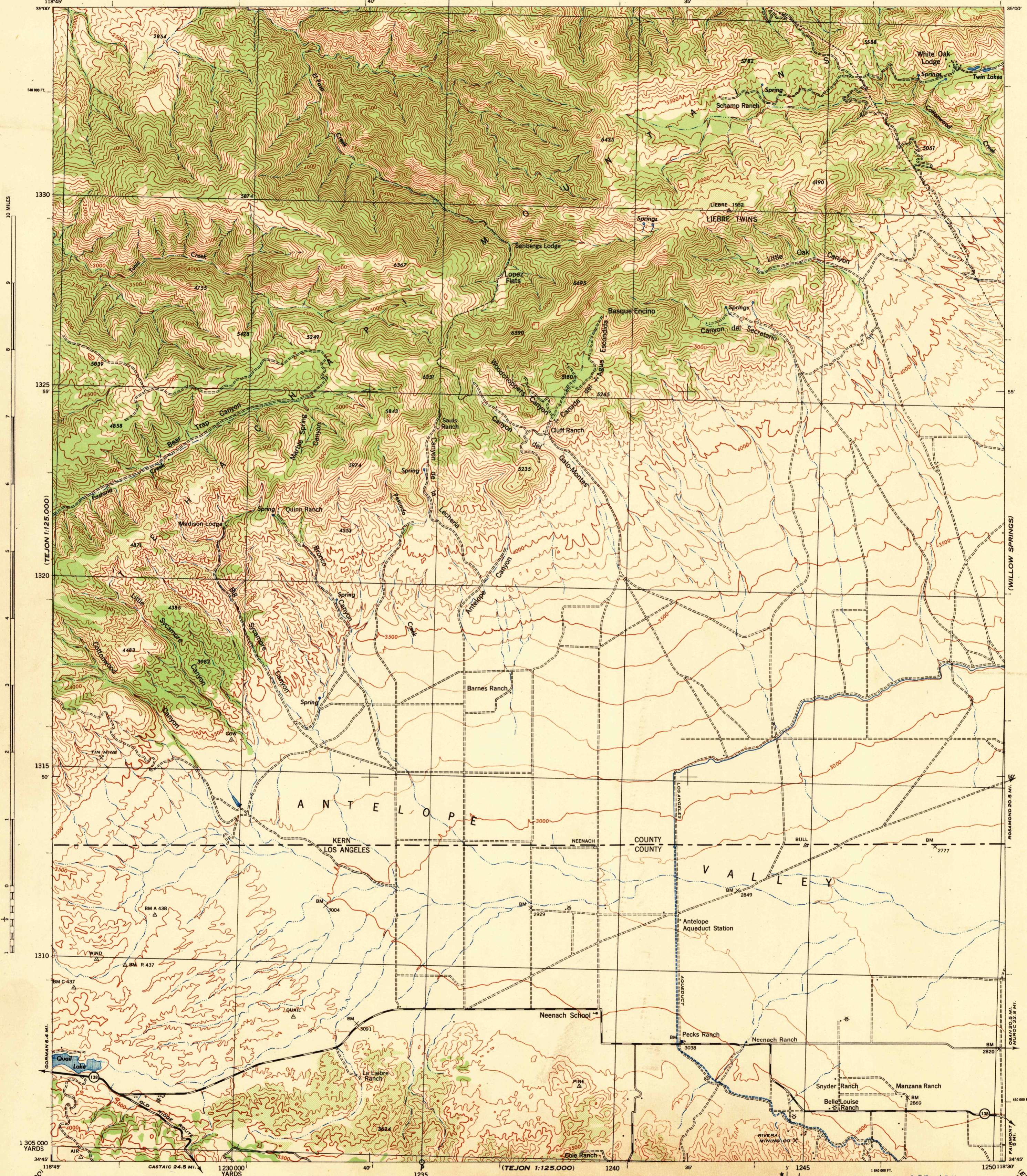
CALIFORNIA 1:62,500

WAR DEPARTMENT
CORPS OF ENGINEERS, U. S. ARMY
(CUMMINGS MOUNTAIN)

FIRST EDITION-AMS 1

NEENACH QUADRANGLE
15 MINUTE SERIES

(TEHACHAPI)



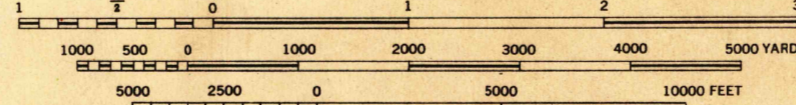
TEJON I:125,000

Prepared under the direction of the Chief of Engineers,
U. S. Army, 1943.
Control by U. S. C. & G. S., U. S. G. S. and Fairchild Aerial Surveys, Inc.,
Topography by Fairchild Aerial Surveys, Inc., by Stereophotogrammetric Process.
Photography by Fairchild Aerial Surveys, Inc., Los Angeles, California, 1943.
Polyconic Projection, 1927 North American Datum

ROAD CLASSIFICATION 1943

Dependable hard-surface, heavy-duty road. U. S. Route 160
Loose-surface graded, dry weather road. U. S. Route 160
Secondary, hard-surface, all-weather road. U. S. Route 160
Dirt Road. U. S. Route 160
State Route 30
More than two lanes indicated by note along road with tick at point of change. 3 LANE 4 LANE

Brush



CONTOUR INTERVAL 100 FEET
DATUM IS MEAN SEA LEVEL

FIVE THOUSAND YARD GRID COMPUTED FROM GRID SYSTEM FOR PROGRESSIVE MAPS
IN THE U. S. ZONE G, U. S. C. & G. S. SPECIAL PUBLICATION NO. 59
THE LAST THREE DIGITS OF THE GRID NUMBERS ARE OMITTED
CALIFORNIA STATE GRID ZONE S IS INDICATED BY DOTTED TICKS OUTSIDE THE NEAT
LINE AT 10,000 FT. INTERVALS

NOTE: OFFICERS USING THIS MAP WILL MARK REVISION CORRECTIONS AND ADDITIONS WHICH COME
TO THEIR ATTENTION AND MAIL DIRECT TO "THE CHIEF OF ENGINEERS, WASHINGTON, D. C."

APPROXIMATE MEAN DECLINATION 1943
FOR CENTER OF SHEET
ANNUAL MAGNETIC CHANGE 1" DECREASE
Use diagram only to obtain numerical values. To determine
magnetic north line, connect the pivot point "P" on the
north edge of the map with the value of the angle between
GRID NORTH and MAGNETIC NORTH, as plotted on the
degree scale of the north edge of the map.

USGS
Historical File
Topographic Division
Inspection and Editing

NEENACH, CALIF.
N3445-W11830/15

ELIZABETH I:125,000