

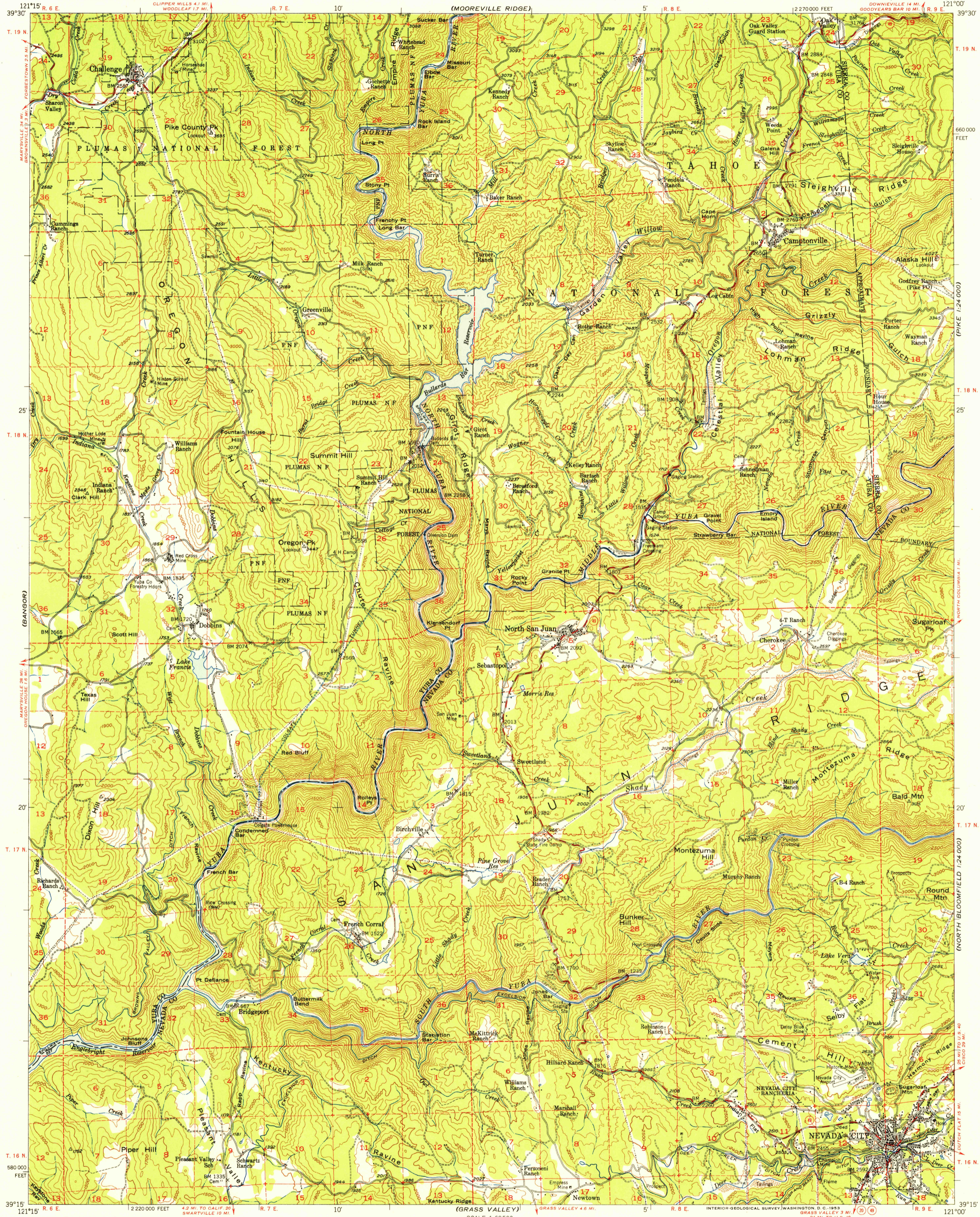
U.S.G.S. FILE COPY

UNITED STATES DEPARTMENT OF THE INTERIOR GEOLOGICAL SURVEY

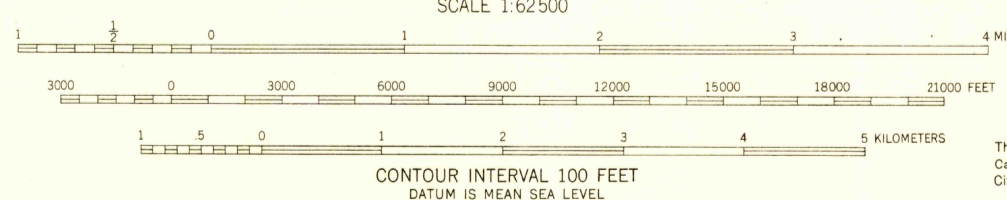
BUREAU OF RECLAMATION

STATE OF CALIFORNIA EARL WARREN, GOVERNOR FRANK B. DURKEE, DIRECTOR OF PUBLIC WORKS A. D. EDMONSTON, STATE ENGINEER

NEVADA CITY QUADRANGLE CALIFORNIA 15 MINUTE SERIES (TOPOGRAPHIC)



Mapped by Fairchild Aerial Surveys, Inc. Field inspected, edited, and published by the Geological Survey Control by Fairchild Aerial Surveys, Inc., USGS, and USC&GS Topography from aerial photographs by stereoplaniograph methods Aerial photographs taken 1946-1947. Field check 1948 Polyconic projection. 1927 North American datum 10,000-foot grid based on California coordinate system, zone 2 Dashed land lines indicate approximate locations



ROAD CLASSIFICATION Heavy-duty 4 LANE 6 LANE Light-duty 4 LANE 6 LANE Medium-duty 4 LANE 6 LANE Unimproved dirt U.S. Route State Route

CONTOUR INTERVAL 100 FEET DATUM IS MEAN SEA LEVEL THIS MAP COMPLIES WITH NATIONAL MAP ACCURACY STANDARDS FOR SALE BY U.S. GEOLOGICAL SURVEY, FEDERAL CENTER, DENVER, COLORADO OR WASHINGTON 25, D. C. A FOLDER DESCRIBING TOPOGRAPHIC MAPS AND SYMBOLS IS AVAILABLE ON REQUEST

USGS Historical File Photographic Division NEVADA CITY, CALIF. N3915-W12100/15 1948

JAN 14 1953 3170