

MT. WHITNEY 1:250 000

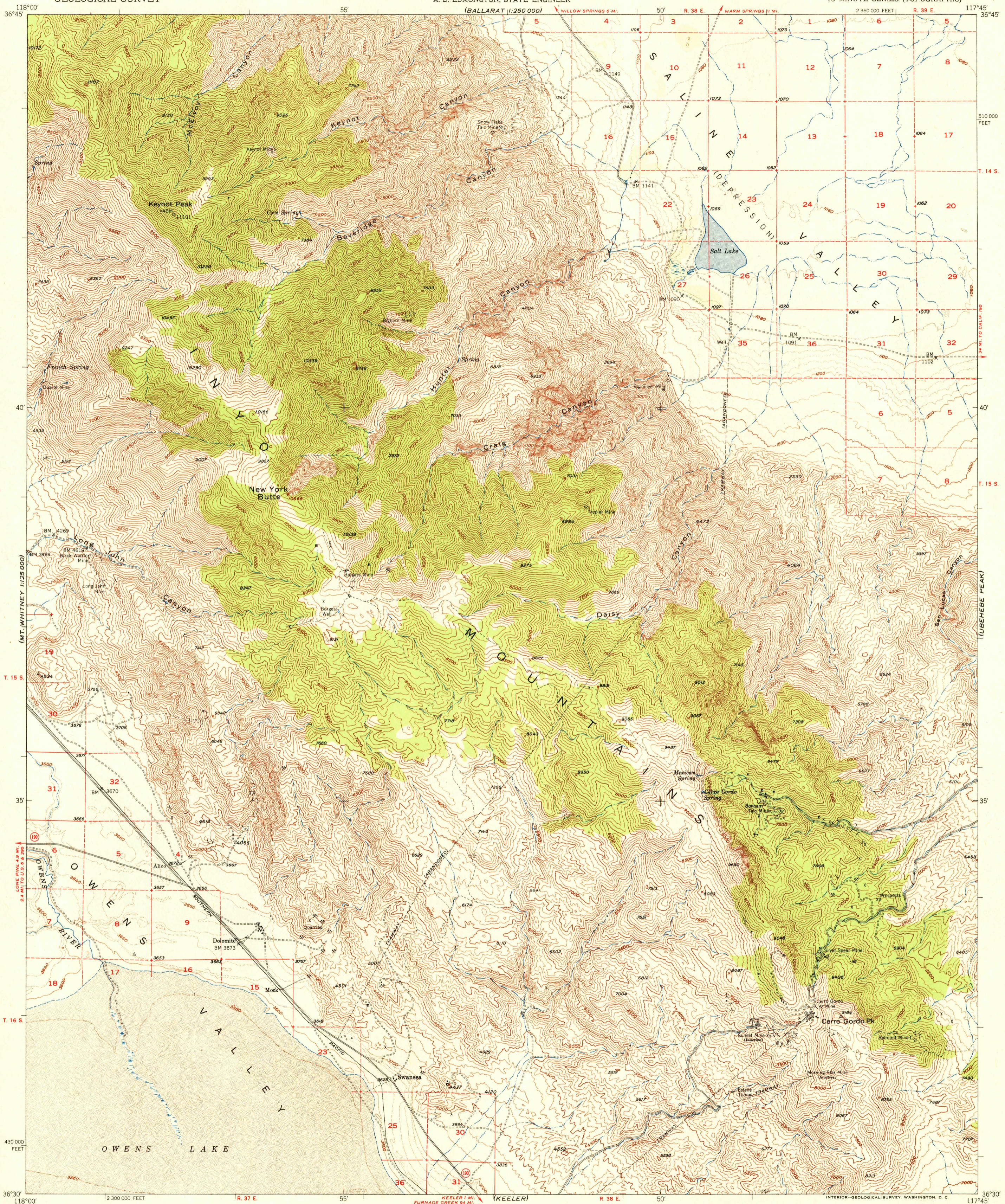
U.S.G.S. FILE COPY Inspection and Editing.

UNITED STATES DEPARTMENT OF THE INTERIOR GEOLOGICAL SURVEY

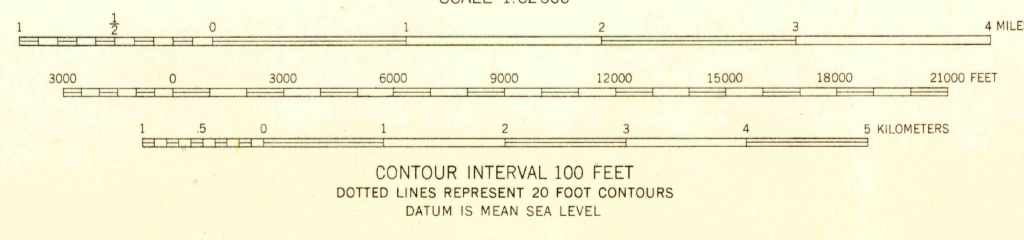
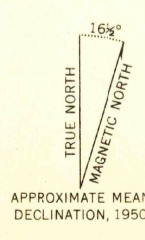
STATE OF CALIFORNIA EARL WARREN, GOVERNOR C. H. PURCELL, DIRECTOR OF PUBLIC WORKS A. D. EDMONSTON, STATE ENGINEER

NEW YORK BUTTE QUADRANGLE CALIFORNIA-INYO CO. 15 MINUTE SERIES (TOPOGRAPHIC)

BALLARAT 1:250 000



Mapped, edited, and published by the Geological Survey Control by USGS, USCGS, and City of Los Angeles Topography from aerial photographs by multiplex methods and by plane-table surveys Aerial photographs taken 1947. Field check 1950 Polycyclic projection. 1927 North American datum 10,000-foot grids based on California coordinate system, zone 4 Unchecked elevations are shown in brown Dashed land lines indicate approximate location



ROAD CLASSIFICATION table with symbols for heavy-duty, medium-duty, light-duty, and unpaved roads, and for U.S. and State routes.

USGS Historical File Topographic Division FILE COPY Inspection and Editing.

NEW YORK BUTTE, CALIF. N3630-W11745/15 EDITION OF 1951

FOR SALE BY U. S. GEOLOGICAL SURVEY, FEDERAL CENTER, DENVER, COLORADO OR WASHINGTON 25, D. C. A FOLDER DESCRIBING TOPOGRAPHIC MAPS AND SYMBOLS IS AVAILABLE ON REQUEST

AUG 2 1951 3185