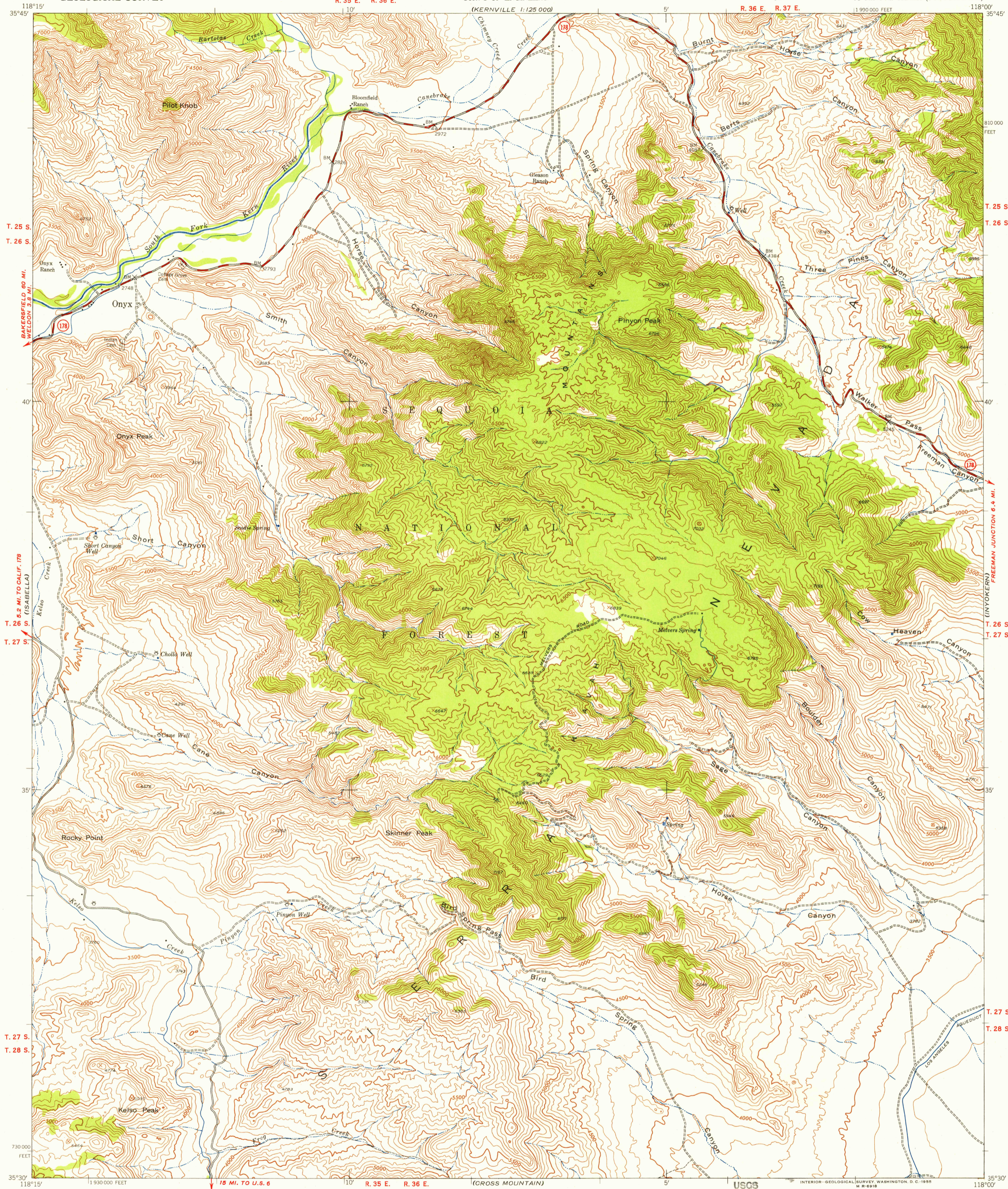


R. 35 E. R. 36 E.

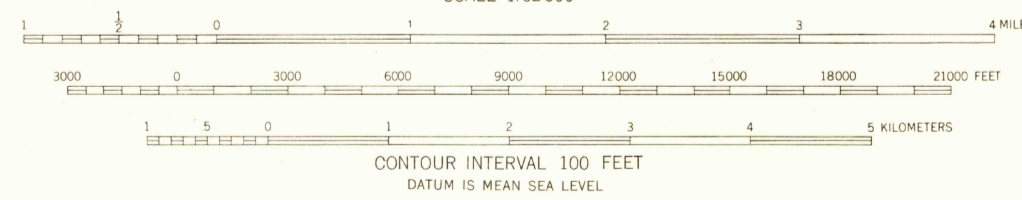
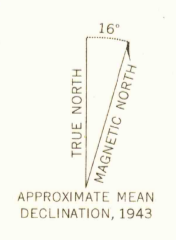
R. 36 E. R. 37 E.



118°15' 35°45' T. 25 S. T. 26 S. T. 27 S. T. 28 S. 73000 FEET 35°30'

118°00' 35°45' T. 25 S. T. 26 S. T. 27 S. T. 28 S. 81000 FEET 35°30'

Map by the Army Map Service... Control by USGS, USC&GS, and Fairchild Aerial Surveys, Inc. Topography from aerial photographs by photogrammetric methods Aerial photographs taken 1943



USGS Historical File Topographic Division

ROAD CLASSIFICATION Heavy-duty 4 LANE IS LANE Light-duty Medium-duty 4 LANE IS LANE Unimproved dirt U.S. Route State Route

U.S.G.S. FILE COPY TOPOGRAPHIC DIVISION

ONYX, CALIF. N3530-W11800/15 1943

FOR SALE BY U. S. GEOLOGICAL SURVEY, FEDERAL CENTER, DENVER, COLORADO OR WASHINGTON 25, D. C. A FOLDER DESCRIBING TOPOGRAPHIC MAPS AND SYMBOLS IS AVAILABLE ON REQUEST

JUN 3 1955