

(KERNVILLE 1:125,000)

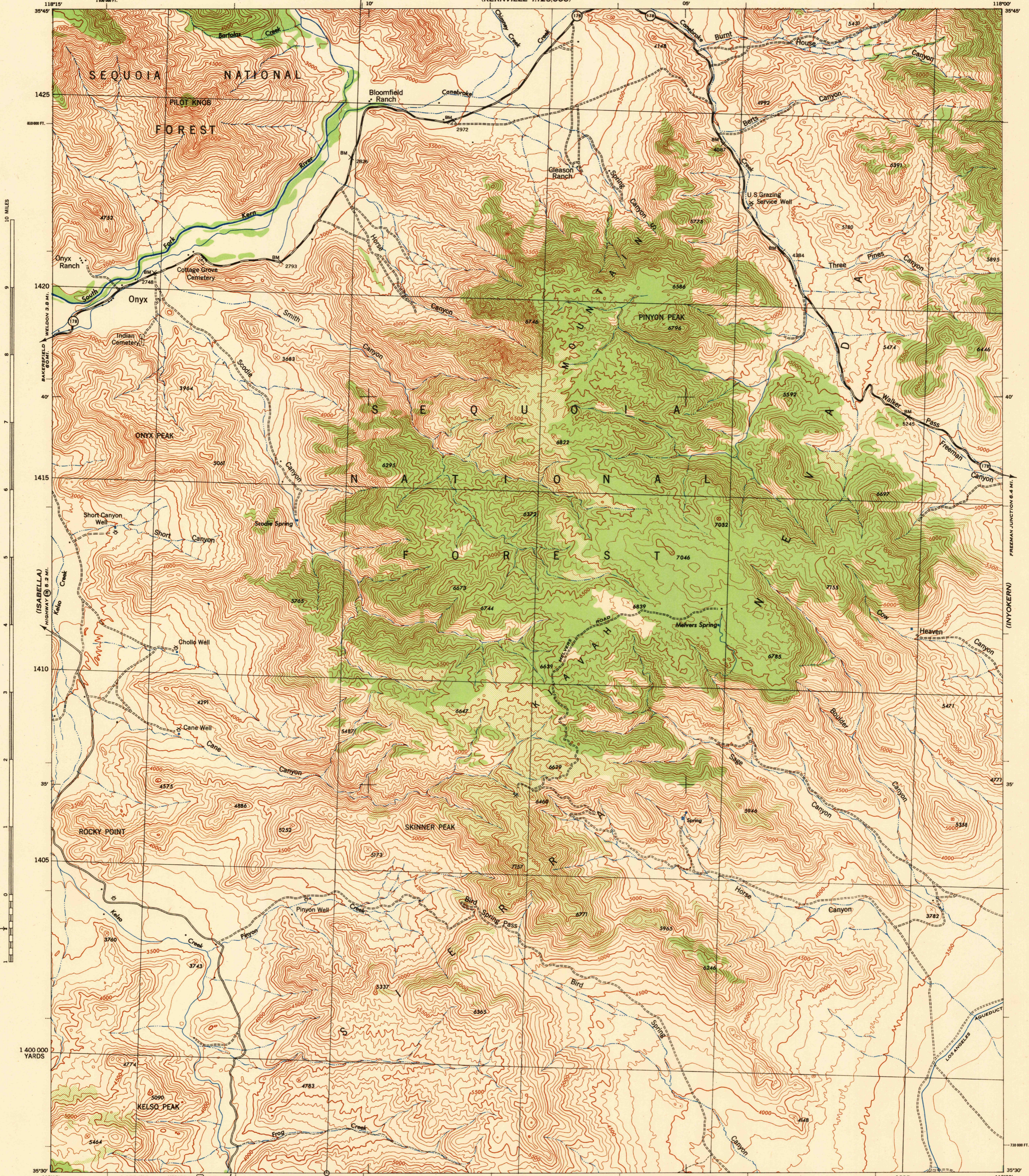
CALIFORNIA 1:62,500  
KERN COUNTY

WAR DEPARTMENT  
CORPS OF ENGINEERS, U. S. ARMY

FIRST EDITION-AMS 1

ONYX QUADRANGLE

15 MINUTE SERIES



(EMERALD MOUNTAIN)

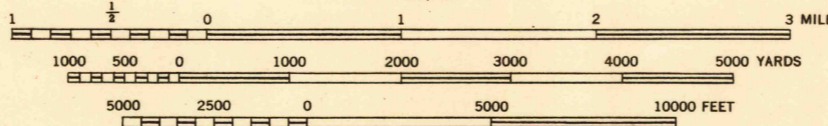
First Edition 1943.

Prepared under the direction of the Chief of Engineers,  
U. S. Army, 1943.  
Control by U. S. C. & G. S., U. S. G. S. and Fairchild Aerial Surveys, Inc.,  
Topography by Fairchild Aerial Surveys, Inc., by Stereophotogrammetric Process.  
Photography by Fairchild Aerial Surveys, Inc., Los Angeles, California., 1943.  
Polyconic Projection, 1927 North American Datum.

**ROAD CLASSIFICATION 1943**

Dependable hard surface. Heavy duty road. U. S. Route  
Loose-surface graded. Dry weather road.  
Secondary, hard-surface. State Route  
All-weather road. Dirt Road  
More than two lanes indicated by note along road with tick at point of change. 3 LANE | 4 LANE

Brush

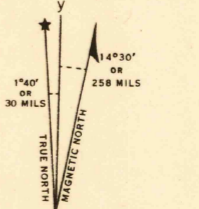


**CONTOUR INTERVAL 100 FEET**  
**DATUM IS MEAN SEA LEVEL**

FIVE THOUSAND YARD GRID COMPUTED FROM "GRID SYSTEM FOR PROGRESSIVE MAPS  
IN THE U. S." ZONE G, U. S. C. & G. S. SPECIAL PUBLICATION NO. 59  
THE LAST THREE DIGITS OF THE GRID NUMBERS ARE OMITTED

CALIFORNIA STATE GRID ZONE IS INDICATED BY DOTTED  
TICKS OUTSIDE THE NEAT LINE AT 10,000 FOOT INTERVALS

NOTE: OFFICERS USING THIS MAP WILL MAKE NECESSARY CORRECTIONS AND ADJUSTMENTS WHICH COME  
TO THEIR ATTENTION AND MAIL DIRECT TO THE CHIEF OF ENGINEERS, WASHINGTON, D. C.



U.S.G.S.  
FILE COPY  
Inspection and Editings

USGS  
Historical File  
Topographic Division

ONYX, CALIF.  
N3530-W11800/15

(GALDALE)