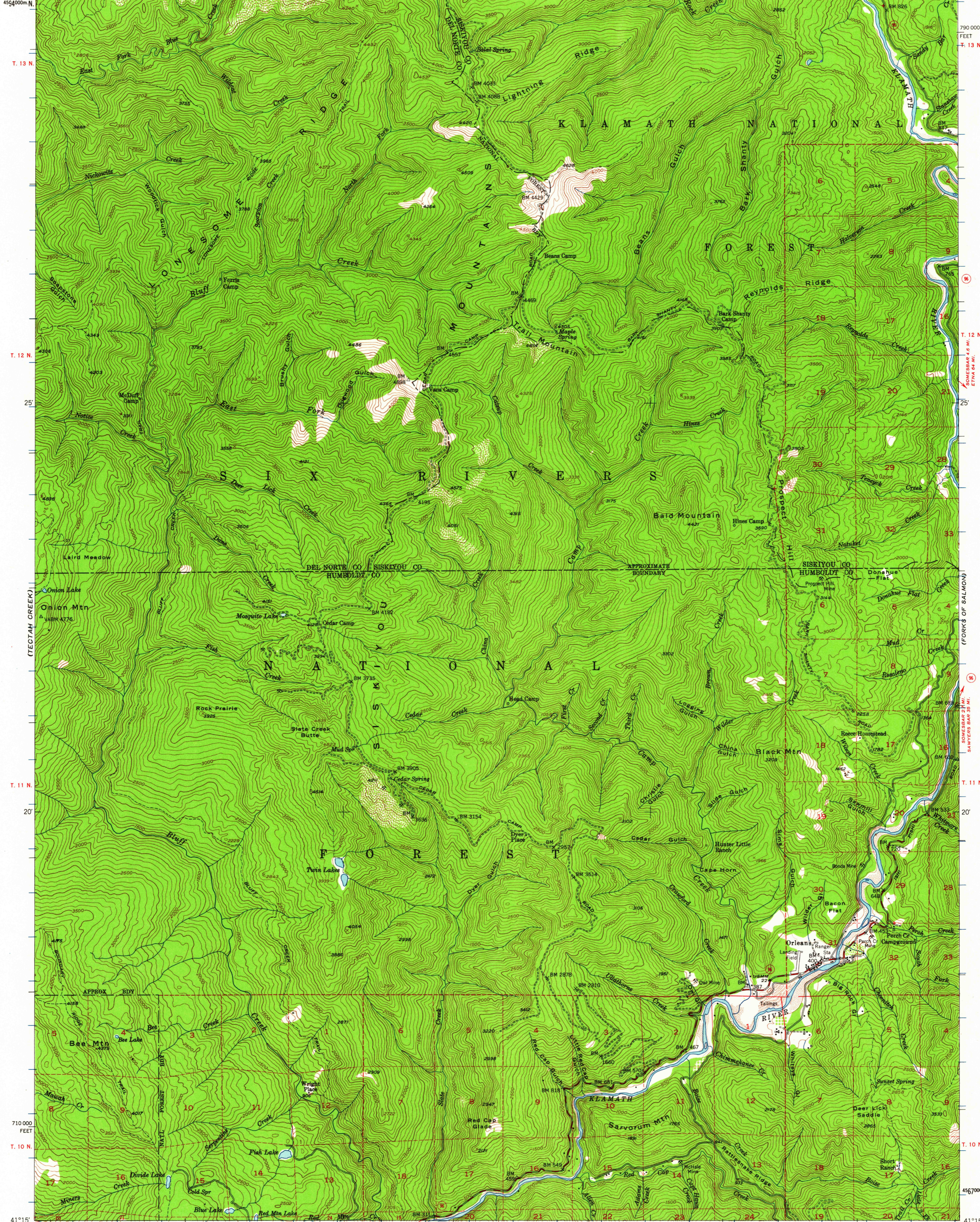
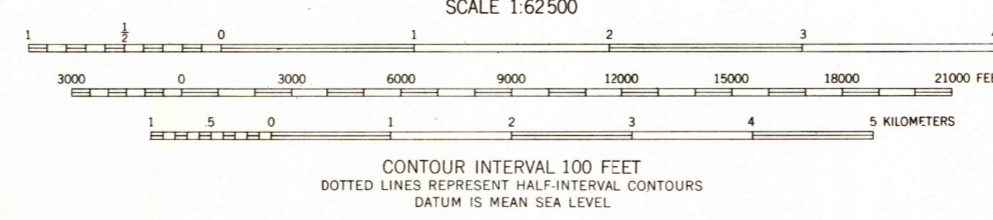
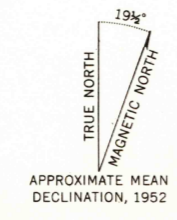


123°45' 438000m E. R. 4 E. 40' ELK VALLEY 19 MI. (DILLON MTN.) R. 5 E. 35' 1580000 FEET R. 6 E. CLEAR CREEK 21 MI. 123°30' 41°30'



Mapped, edited, and published by the Geological Survey  
Control by USGS and USC&GS  
Topography from aerial photographs by multiplex methods  
Aerial photographs taken 1947. Field check 1952  
Polyconic projection. 1927 North American datum  
10,000-foot grid based on California coordinate system, zone 1  
Dashed land lines indicate approximate locations  
Certain land lines are omitted because of insufficient data  
All recovered corners are shown  
Unchecked elevations are shown in brown  
1000-meter Universal Transverse Mercator grid ticks,  
zone 10, shown in blue



ROAD CLASSIFICATION

Medium-duty	Light-duty
Unimproved dirt	State Route



THIS MAP COMPLIES WITH NATIONAL MAP ACCURACY STANDARDS  
FOR SALE BY U. S. GEOLOGICAL SURVEY, DENVER 25, COLORADO OR WASHINGTON 25, D. C.  
A FOLDER DESCRIBING TOPOGRAPHIC MAPS AND SYMBOLS IS AVAILABLE ON REQUEST

ORLEANS, CALIF.  
N4115-W12330/15  
1952

JUN 27 1961