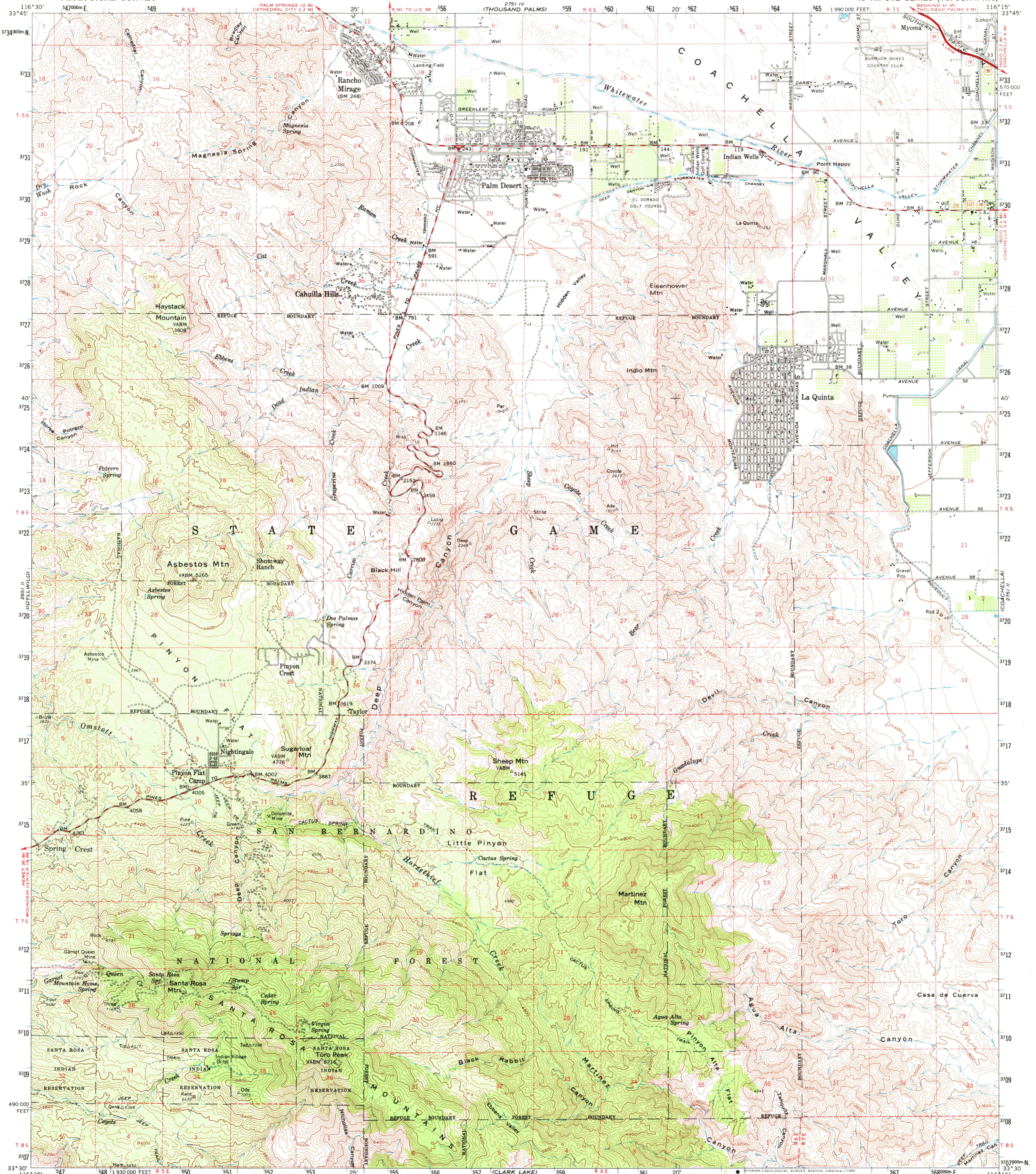


(PALM SPRINGS) 2851 I  
33°45'  
3734000 N  
116°30'  
547000 E  
549  
R 5 E  
CATHEDRAL CITY 3.3 MI  
5 MI TO U.S. 99  
2751 IV  
(THOUSAND PALMS)  
59  
R 6 E  
60  
61  
20'  
62  
63  
64  
65  
1990 000 FEET  
R 7 E  
SOUTHERN  
BURNING 8.1 MI  
(THOUSAND PALMS 9 MI)  
116°15'  
33°45'  
3733  
570000 FEET  
3732  
3731  
3730  
3729  
3728  
3727  
3726  
40'  
3725  
3724  
40'  
3723  
3722  
3720  
3719  
3718  
3717  
35'  
3715  
3714  
3713  
3712  
3711  
3710  
3709  
3708  
490 000 FEET  
T 8 S  
3707  
33°30'  
116°30'  
547  
1930 000 FEET  
R 5 E  
50  
51  
52  
25'  
55  
56  
57  
58  
59  
R 6 E  
60  
61  
20'  
62  
63  
64  
65  
560000 E  
116°15'  
33°30'  
3707000 N  
33°30'  
2751 II  
(COACHELLA)  
2751 II  
2751 I  
LOST HORSE MTR  
2751 I  
LOST HORSE MTR

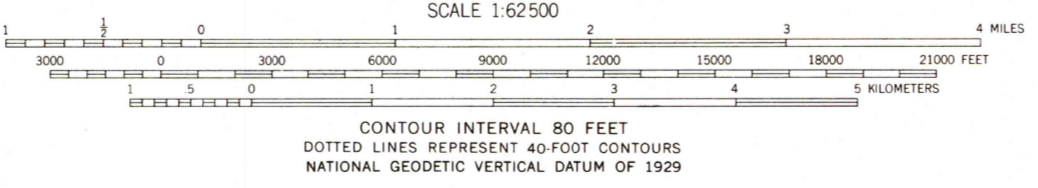
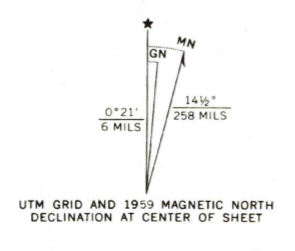
UNITED STATES  
DEPARTMENT OF THE INTERIOR  
GEOLOGICAL SURVEY

STATE OF CALIFORNIA  
DEPARTMENT OF WATER RESOURCES

PALM DESERT QUADRANGLE  
CALIFORNIA—RIVERSIDE CO.  
15 MINUTE SERIES (TOPOGRAPHIC)



Mapped, edited, and published by the Geological Survey  
Control by USGS, USC&GS, and USCE  
Topography from planimetric surveys by USBR 1937-1939  
and from aerial photographs by photogrammetric methods  
Aerial photographs taken 1954. Field check 1957 and 1959  
Polyconic projection. 1927 North American datum  
10,000-foot grid based on California coordinate system, zone 6  
1000-meter Universal Transverse Mercator grid ticks,  
zone 11, shown in blue  
To place on the predicted North American Datum 1983  
move the projection lines 1 meter south and 79 meters east  
There may be private inholdings within the boundaries  
of the National or State reservations shown on this map  
Dashed land lines indicate approximate locations



**ROAD CLASSIFICATION**  
Heavy-duty — Light-duty  
Medium-duty — Unimproved dirt

U.S. Route — State Route

QUADRANGLE LOCATION

The north half of this area also covered by 1:24,000 scale maps of La Quinta 1959, and Rancho Mirage 1957 7.5 minute quadrangles

**PALM DESERT, CALIF.**  
N3330—W11615/15

1959

DMA 2751 III—SERIES V795

THIS MAP COMPLIES WITH NATIONAL MAP ACCURACY STANDARDS  
FOR SALE BY U.S. GEOLOGICAL SURVEY, DENVER, COLORADO 80225, OR RESTON, VIRGINIA 22092  
A FOLDER DESCRIBING TOPOGRAPHIC MAPS AND SYMBOLS IS AVAILABLE ON REQUEST

USGS  
Historical File  
Topographic Division

JAN 29 1981  
6100