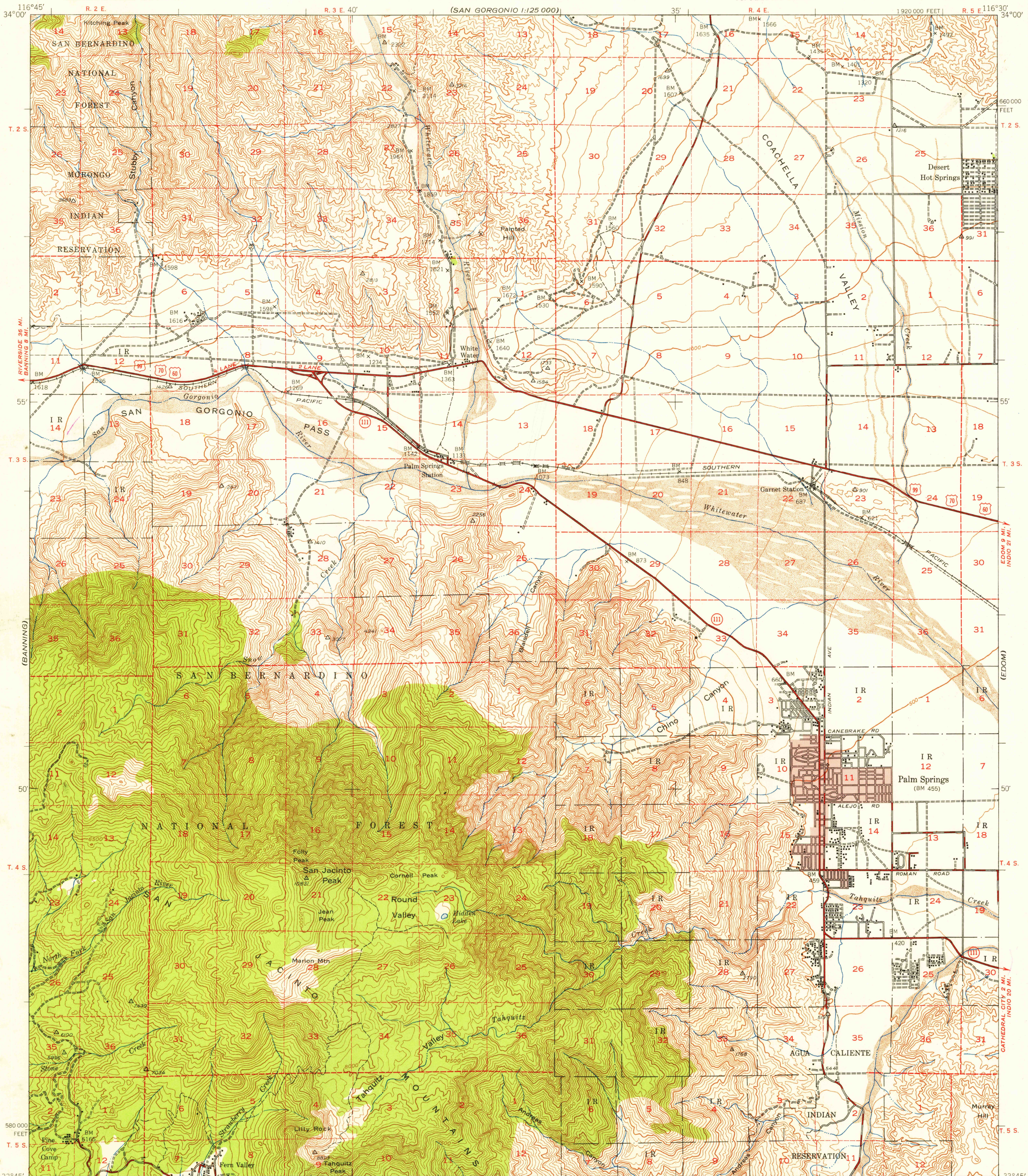
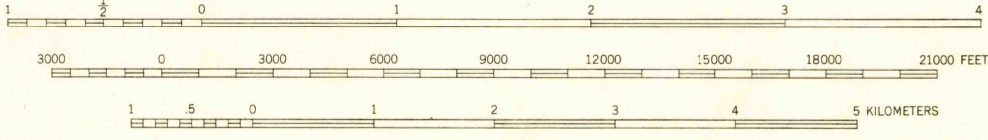
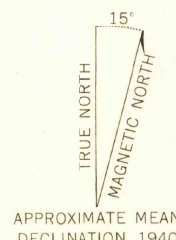


1:25,000
SAN GORGONIO



Mapped by the Army Map Service
Published for civil use by the Geological Survey
Control by USC&GS, Metropolitan Water District
of Southern California and USCE
Topography from aerial photographs by multiplex methods
Aerial photographs taken 1940
Polyconic projection. 1927 North American datum
10,000-foot grid based on California coordinate system, zone 6
Red tint indicates areas in which only
landmark buildings are shown
No distinction is made between dwellings, barns,
commercial and industrial buildings
Dashed land lines indicate approximate locations



CONTOUR INTERVAL 100 FEET
DATUM IS MEAN SEA LEVEL

USGS
Historical File
Topographic Division

ROAD CLASSIFICATION 1943
Heavy-duty 4 LANE 6 LANE Light-duty
Medium-duty 4 LANE 6 LANE Unimproved dirt
U. S. Route State Route



U.S.G.S. FILE COPY
TOPOGRAPHIC DIVISION
PALM SPRINGS, CALIF.
N3345-W11630/15
1940