

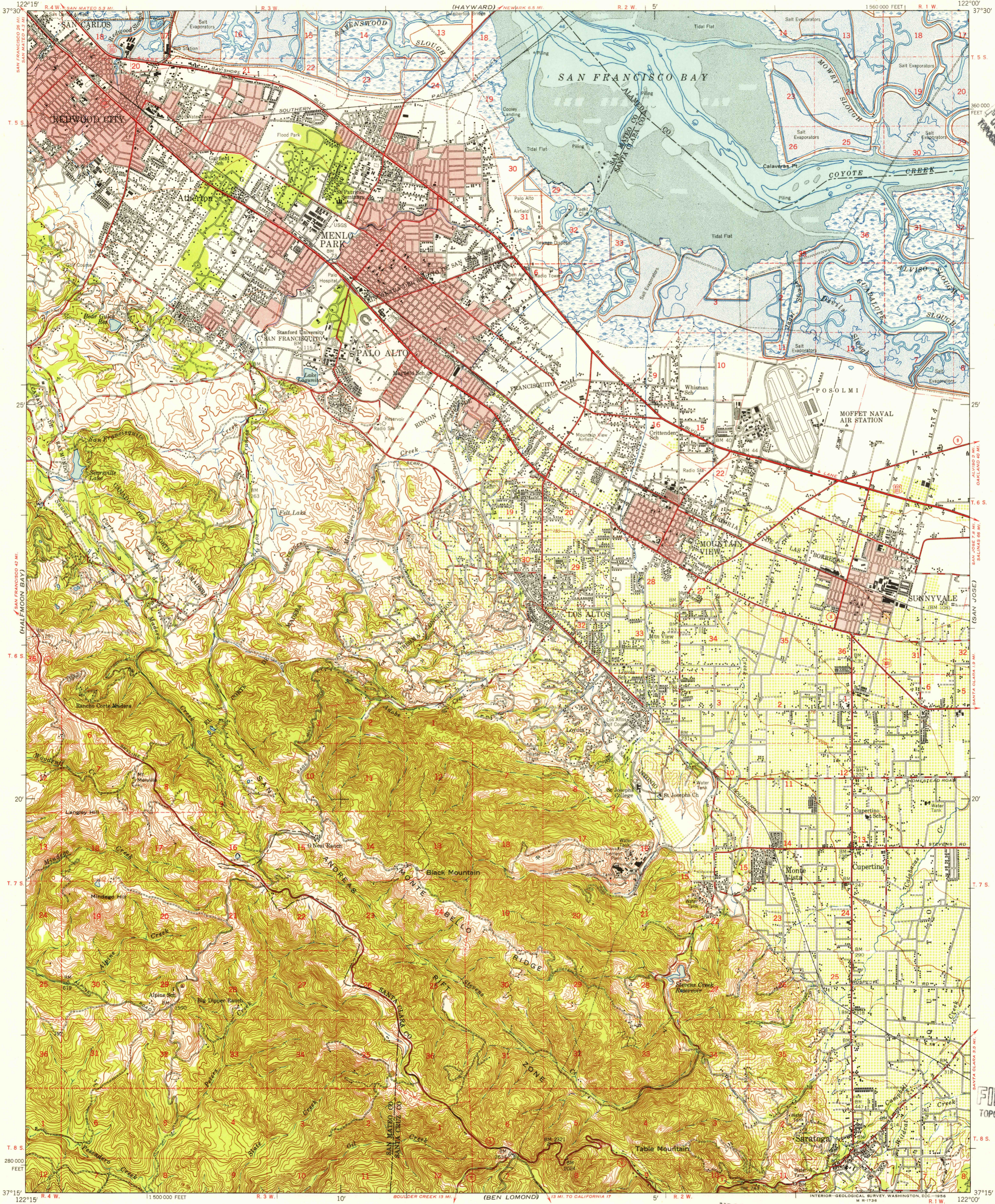
(SAN MATEO)

UNITED STATES
DEPARTMENT OF THE INTERIOR
GEOLOGICAL SURVEY

UNITED STATES
DEPARTMENT OF THE ARMY
CORPS OF ENGINEERS

PALO ALTO QUADRANGLE
CALIFORNIA
15 MINUTE SERIES (TOPOGRAPHIC)

(PLEASANTON)



U.S.G.S.
FILE COPY
TOPOGRAPHIC DIVISION

(SAN FRANCISCO BAY)

Mapped by the Army Map Service
Published for civil use by the Geological Survey
Control by USCG&S and USCE

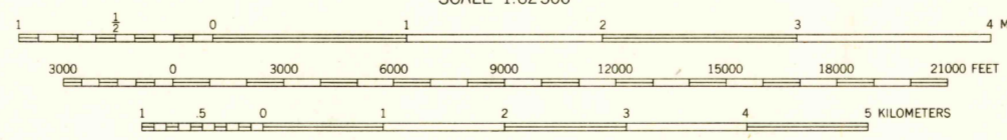
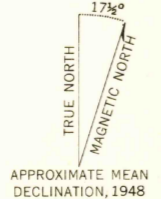
Topography from aerial photographs taken 1937-1940,
and by reference to earlier plane-table surveys. Planimetric
detail revised from aerial photographs taken 1947-1948.

Polyconic projection. 1927 North American datum
10,000-foot grid based on California coordinate system, zone 3

Red tint indicates area in which only
landmark buildings are shown

No distinction is made between barns, dwellings,
commercial and industrial buildings

Dashed land lines indicate approximate locations



SCALE 1:62,500

CONTOUR INTERVAL 50 FEET
DATUM IS MEAN SEA LEVEL
DEPTH CURVES AND SOUNDINGS IN FEET - DATUM IS MEAN LOWER LOW WATER
SHORELINE SHOWN REPRESENTS THE APPROXIMATE LINE OF MEAN HIGH WATER
THE AVERAGE RANGE OF TIDE IS APPROXIMATELY 5 FEET

USGS
Historical File
Topographic Division

ROAD CLASSIFICATION 1950
Heavy-duty 4 LANE 18 LANE Light-duty
Medium-duty 4 LANE 18 LANE Unimproved dirt
U. S. Route State Route

This area is also covered by 1:24,000 scale maps of
Palo Alto 1953, Mountain View 1953, Cupertino 1953,
and Menlo Park 1955. 7.5 minute quadrangles
PALO ALTO, CALIF.
N315-W12200/15

QUADRANGLE LOCATION

FOR SALE BY U. S. GEOLOGICAL SURVEY, FEDERAL CENTER, DENVER, COLORADO OR WASHINGTON 25, D. C.
A FOLDER DESCRIBING TOPOGRAPHIC MAPS AND SYMBOLS IS AVAILABLE ON REQUEST

1948

U.S.G.S.
FILE COPY
TOPOGRAPHIC DIVISION

(LOS GATOS)

MAR 27 1956

3665