

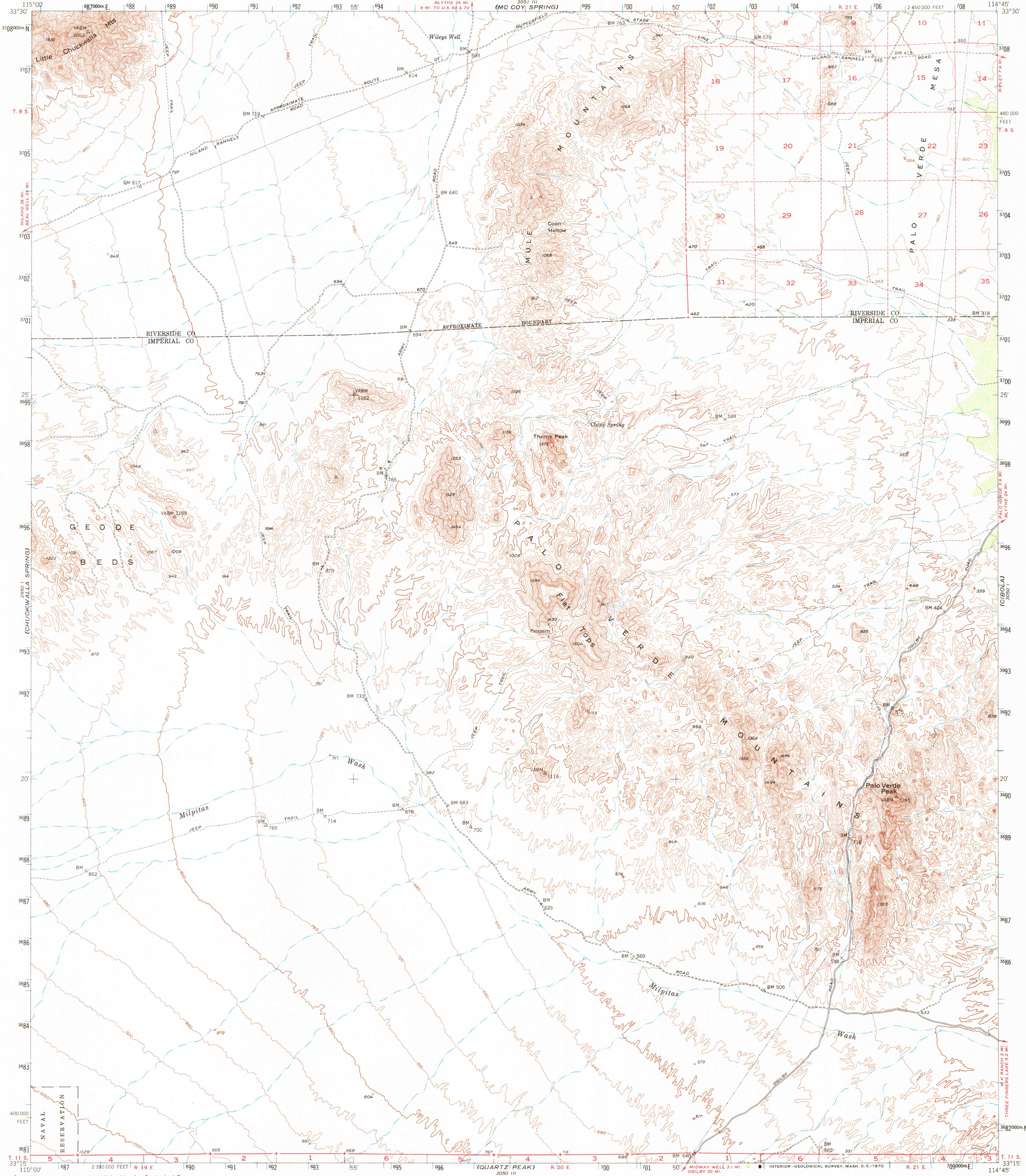
(SIDEWINDER WELL)
2950 11
2950 11

UNITED STATES
DEPARTMENT OF THE INTERIOR
GEOLOGICAL SURVEY

STATE OF CALIFORNIA
REPRESENTED BY THE
DIRECTOR OF PUBLIC WORKS

PALO VERDE MTS. QUADRANGLE
CALIFORNIA
15 MINUTE SERIES (TOPOGRAPHIC)

2950 11
2950 11
2950 11
2950 11



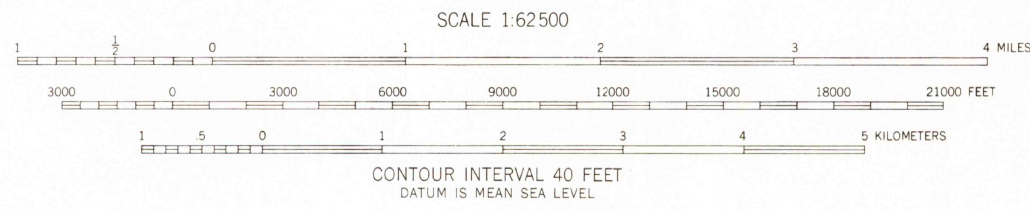
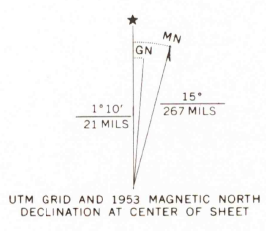
Mapped, edited, and published by the Geological Survey
Control by USGS, USC&GS, USCE, USBLM, USBR,
and City of Los Angeles

Topography from aerial photographs by photogrammetric methods
Aerial photographs taken 1948. Field check 1953

Polyconic projection. 1927 North American datum
10,000-foot grid based on California coordinate system, zone 6

Dashed land lines indicate approximate locations
Unchecked elevations are shown in brown

1000-meter Universal Transverse Mercator grid ticks,
zone 11, shown in blue



PALO VERDE MTS., CALIF.
N3315-W11445/1E

THIS MAP COMPLIES WITH NATIONAL MAP ACCURACY STANDARDS
FOR SALE BY U. S. GEOLOGICAL SURVEY, DENVER, COLORADO 80225 OR WASHINGTON, D. C. 20242
A FOLDER DESCRIBING TOPOGRAPHIC MAPS AND SYMBOLS IS AVAILABLE ON REQUEST

1953
AMS 3050 IV-SERIES V795