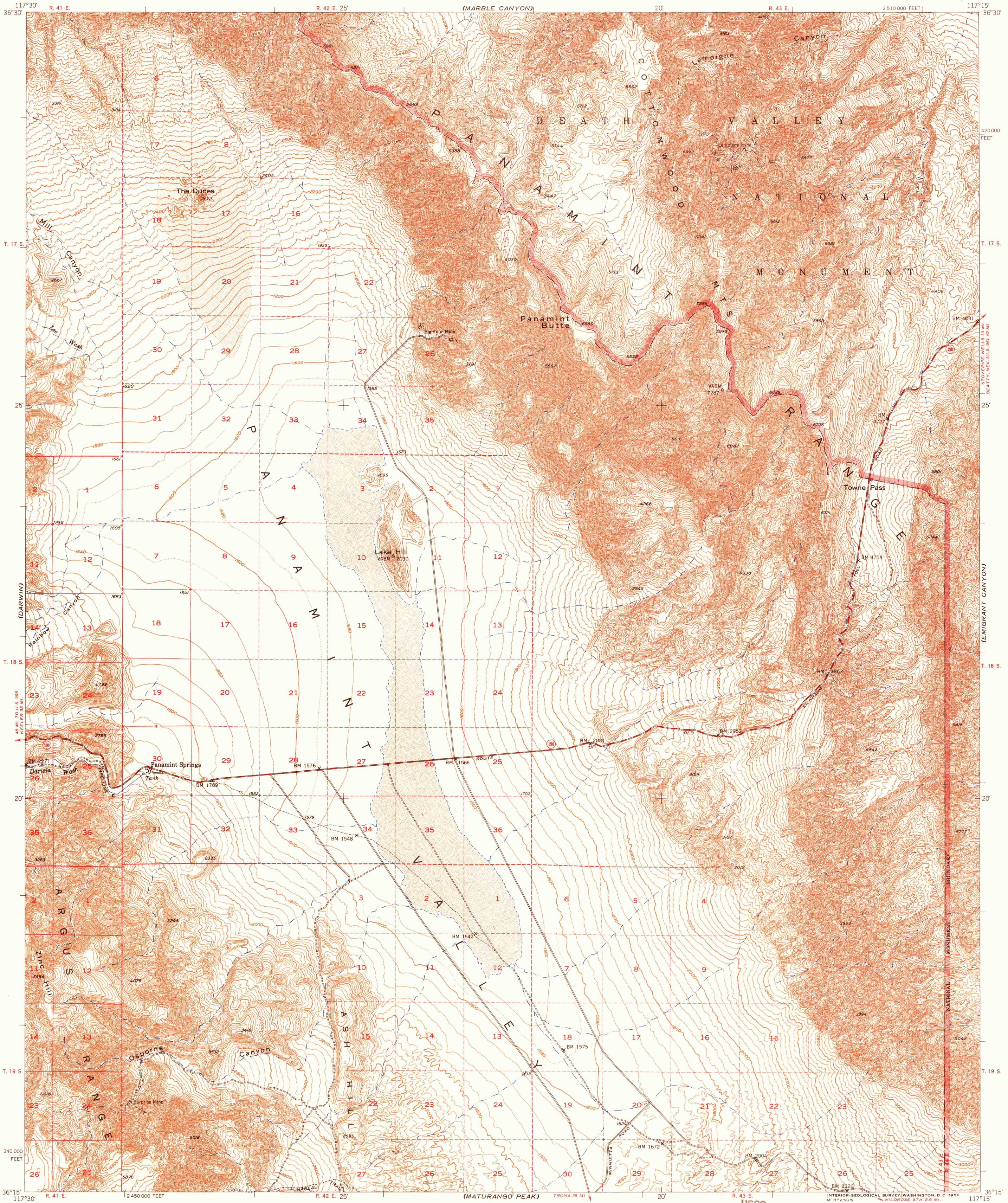


FILE COPY
TOPOGRAPHIC DIVISION

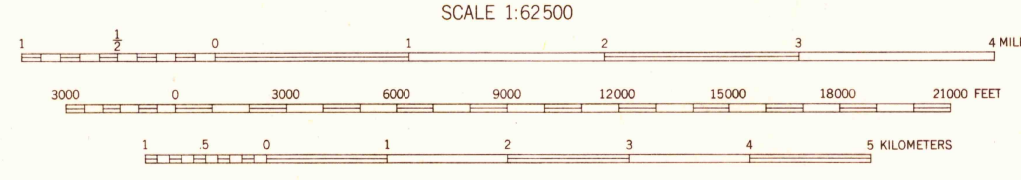
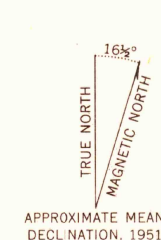
UNITED STATES
DEPARTMENT OF THE INTERIOR
GEOLOGICAL SURVEY

STATE OF CALIFORNIA
REPRESENTED BY THE
DIRECTOR OF PUBLIC WORKS
(MARBLE CANYON)

PANAMINT BUTTE QUADRANGLE
CALIFORNIA-INYO CO.
15 MINUTE SERIES (TOPOGRAPHIC)



Mapped, edited, and published by the Geological Survey
Control by USGS and USC&GS
Topography from aerial photographs by multiplex methods,
and by plane-table surveys 1951. Aerial photographs taken 1947
Polyconic projection. 1927 North American datum
10,000-foot grid based on California coordinate system, zone 4
Dashed land lines indicate approximate locations
Unchecked elevations are shown in brown



CONTOUR INTERVAL 40 FEET
DOTTED LINES REPRESENT HALF-INTERVAL CONTOURS
DATUM IS MEAN SEA LEVEL
THIS MAP COMPLIES WITH NATIONAL MAP ACCURACY STANDARDS
FOR SALE BY U.S. GEOLOGICAL SURVEY, FEDERAL CENTER, DENVER, COLORADO OR WASHINGTON 25, D. C.
A FOLDER DESCRIBING TOPOGRAPHIC MAPS AND SYMBOLS IS AVAILABLE ON REQUEST

USGS
Historical File
Topographic Division
ROAD CLASSIFICATION
Heavy-duty 4 LANE 16 LANE Light-duty
Medium-duty 4 LANE 16 LANE Unimproved dirt
U. S. Route
State Route

U.S.G.S.
FILE COPY
TOPOGRAPHIC DIVISION

PANAMINT BUTTE, CALIF.
N3615-W11715/15
1951