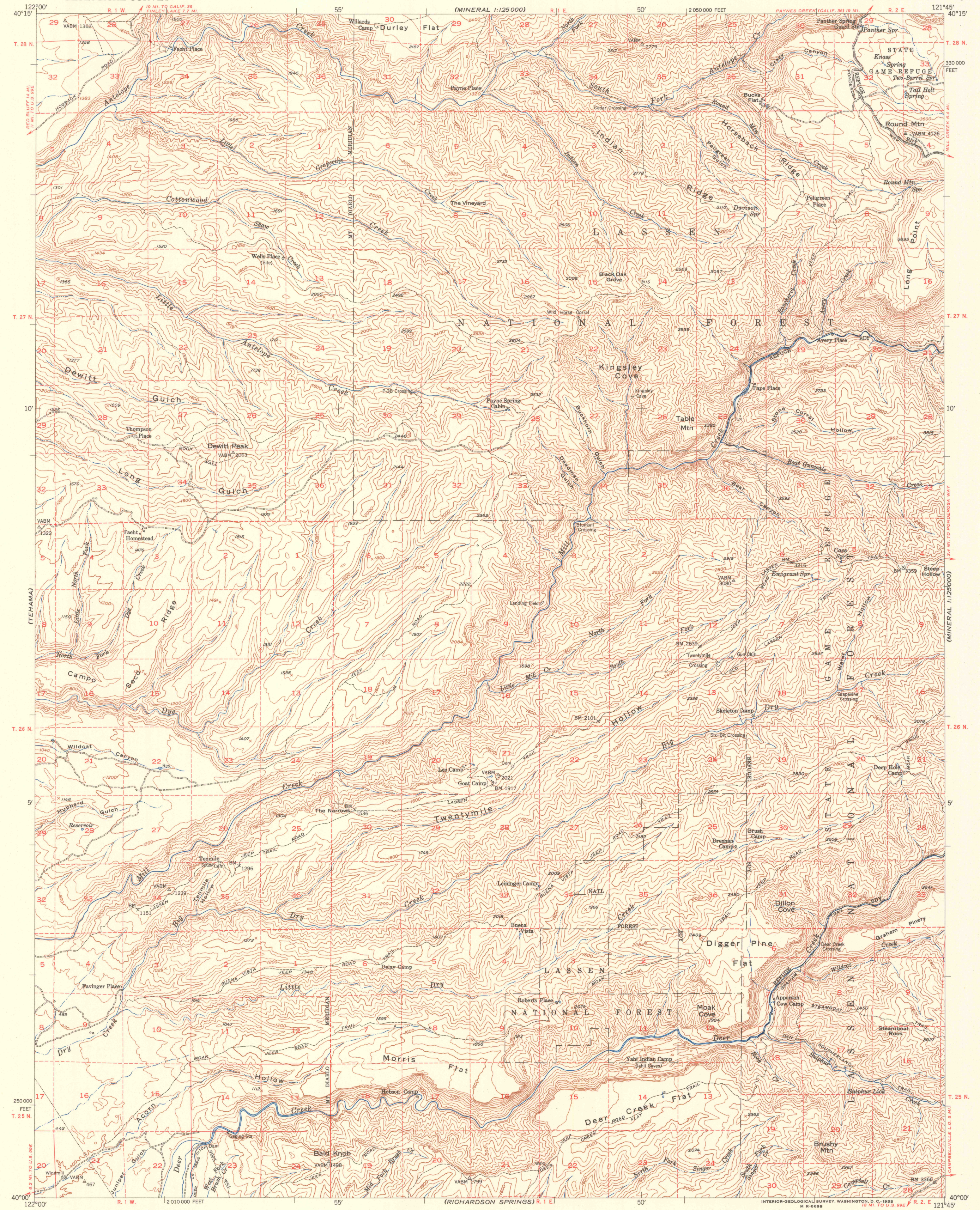
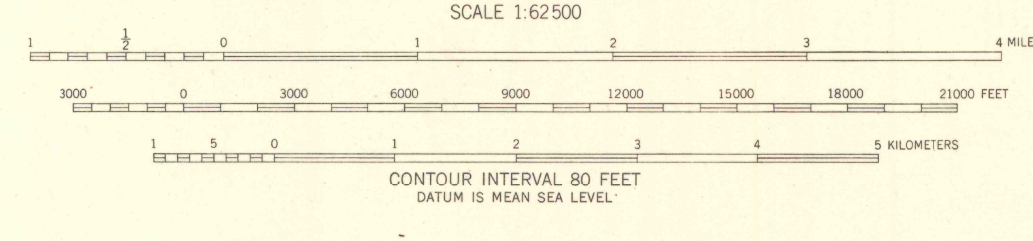
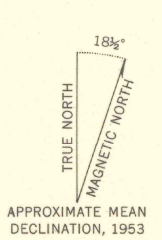


(MINERAL 1:125000)

(MINERAL 1:125000)



Mapped, edited, and published by the Geological Survey
Control by USGS and USC&GS
Topography from aerial photographs by multiplex methods
Aerial photographs taken 1951. Field check 1953
Polyconic projection. 1927 North American datum
10,000-foot grid based on California coordinate system, zone 1
Dashed land lines indicate approximate locations
Unchecked elevations are shown in brown



ROAD CLASSIFICATION
Heavy-duty ——— 4 LANE (6 LANE) Light-duty ———
Medium-duty ——— 4 LANE (6 LANE) Unimproved dirt ———
U. S. Route (circle with number) State Route (circle with number)



PANTHER SPRING, CALIF.
N4000—W12145/15

1953

THIS MAP COMPLIES WITH NATIONAL MAP ACCURACY STANDARDS
FOR SALE BY U. S. GEOLOGICAL SURVEY, FEDERAL CENTER, DENVER, COLORADO OR WASHINGTON 25, D. C.
A FOLDER DESCRIBING TOPOGRAPHIC MAPS AND SYMBOLS IS AVAILABLE ON REQUEST

FILE COPY
MAP INFORMATION OFFICE
GEOLOGICAL SURVEY