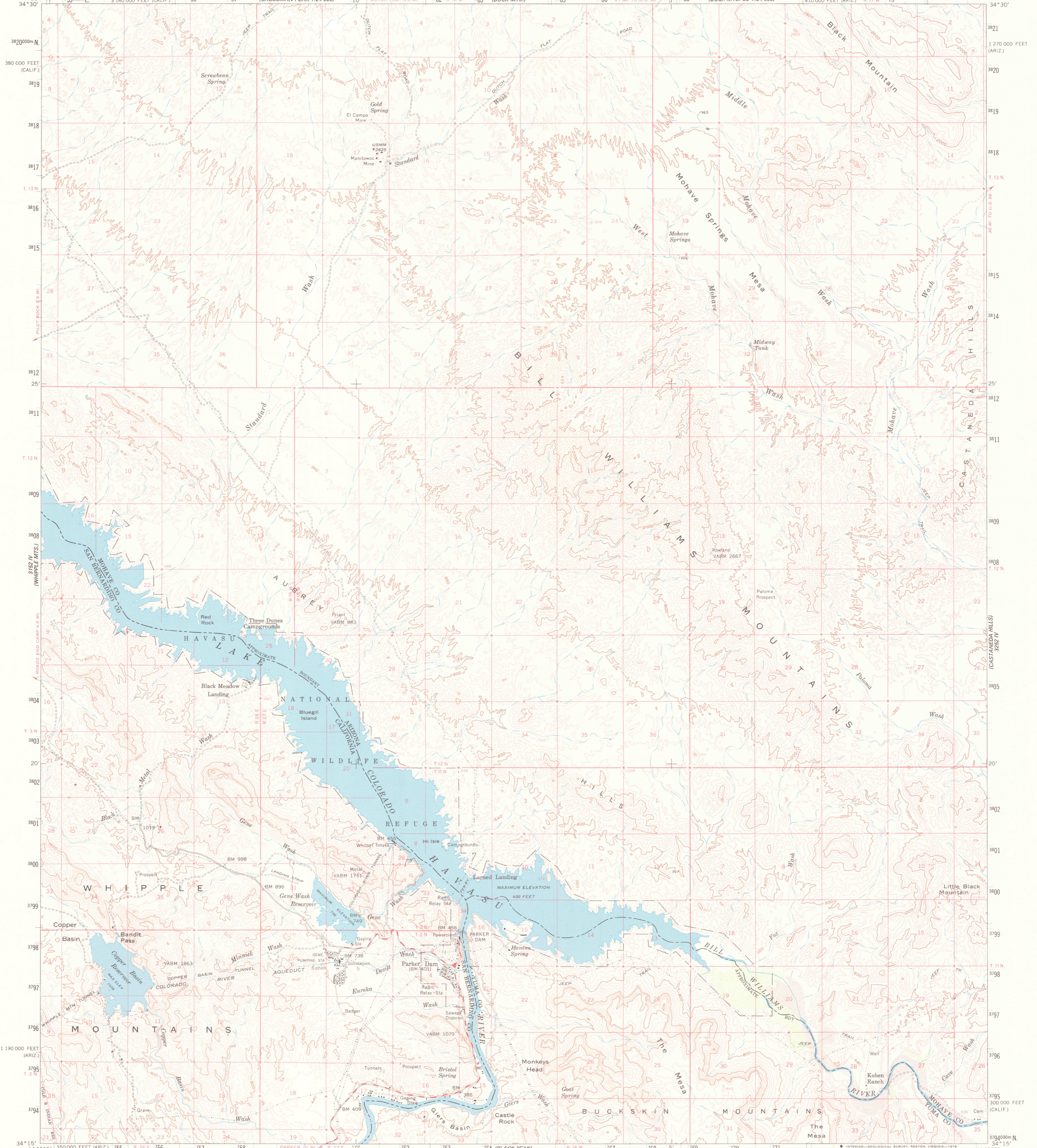
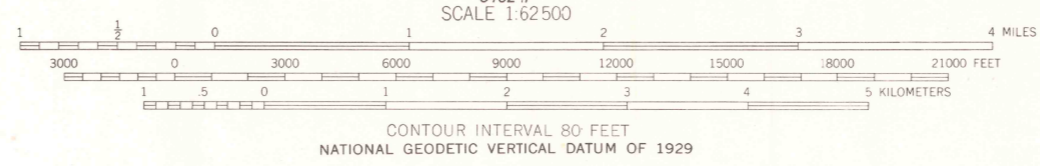
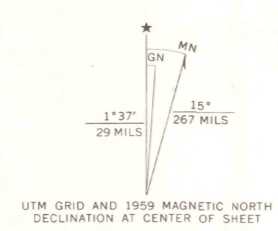


3152 II SE
770000E

3152 II SW
770000E



Mapped, edited, and published by the Geological Survey
Control by USGS and USC&GS
Topography from aerial photographs by photogrammetric methods
Aerial photographs taken 1955. Field check 1959
Polyconic projection. 1927 North American datum
10,000-foot grids based on Arizona coordinate system, west zone
and California coordinate system, zone 5
1000-meter Universal Transverse Mercator grid ticks,
zone 11, shown in blue
Unchecked elevations are shown in brown



ROAD CLASSIFICATION
Medium-duty ——— Light-duty ———
Unimproved dirt - - - - -

The NW, SW, and SE quarters of this area also covered
by 1:24,000-scale maps of Standard Wash, Gene Wash,
and Monkey Head, 7.5 minute quadrangles, surveyed 1959
PARKER DAM, CALIF.—ARIZ.
N3415—W140015

THIS MAP COMPLIES WITH NATIONAL MAP ACCURACY STANDARDS
FOR SALE BY U. S. GEOLOGICAL SURVEY, DENVER, COLORADO 80225, OR RESTON, VIRGINIA 22092
A FOLDER DESCRIBING TOPOGRAPHIC MAPS AND SYMBOLS IS AVAILABLE ON REQUEST