

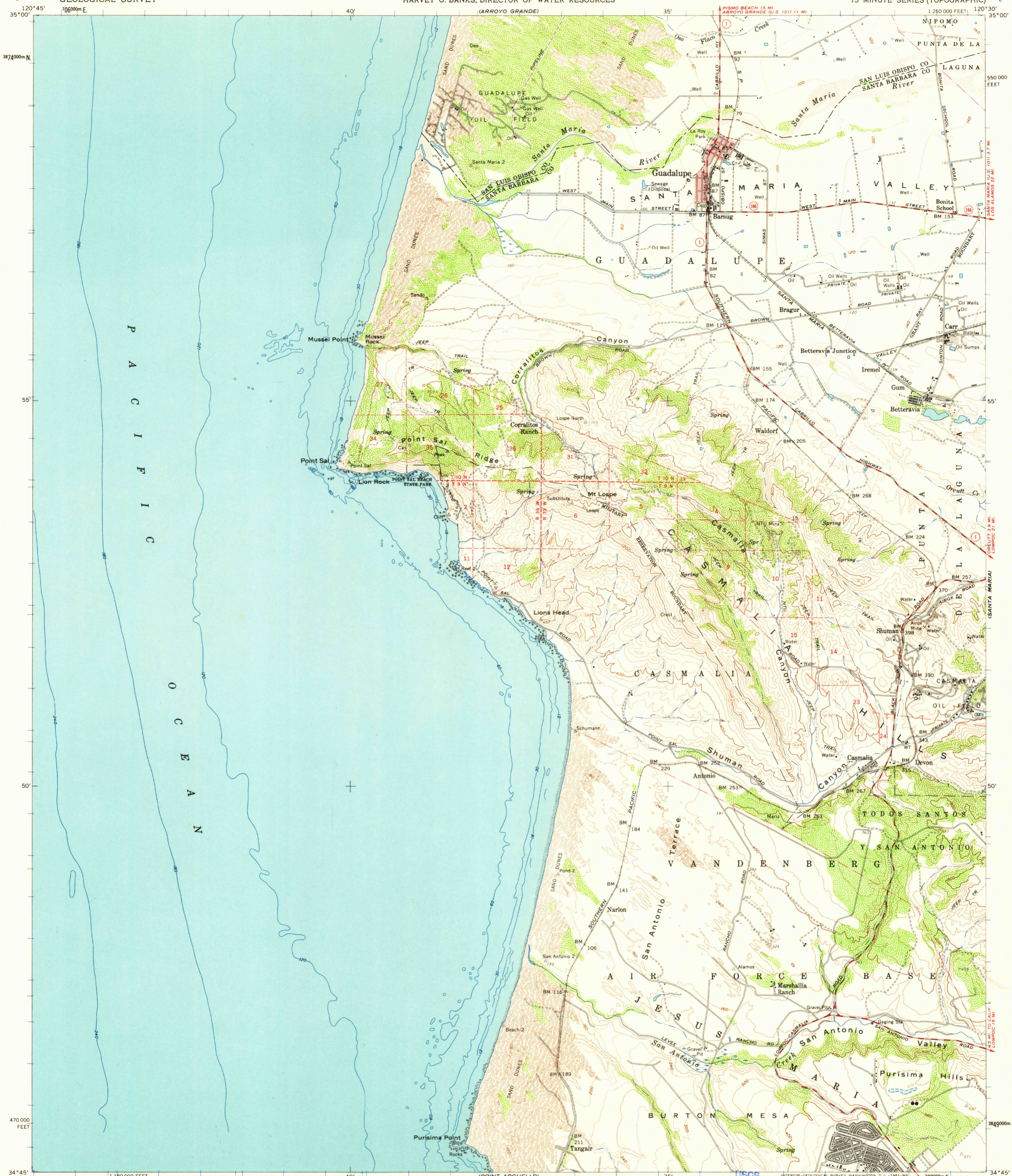
(PORT SAN LUIS)

UNITED STATES
DEPARTMENT OF THE INTERIOR
GEOLOGICAL SURVEY

STATE OF CALIFORNIA
EDMUND G. BROWN, GOVERNOR
HARVEY O. BANKS, DIRECTOR OF WATER RESOURCES

POINT SAL QUADRANGLE
CALIFORNIA
15 MINUTE SERIES (TOPOGRAPHIC)

(NIPOMO)



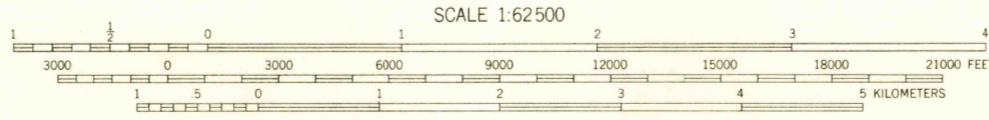
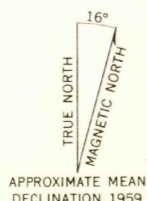
Mapped, edited, and published by the Geological Survey
Control by USGS, USC&GS, and USCE

Compiled in 1960 from 1:24 000-scale maps of
Guadalupe, Point Sal, and Casmalia 7.5 minute
quadrangles, surveyed 1958-1959

Topography from aerial photographs by photogrammetric methods
Aerial photographs taken 1956
Hydrography compiled from USC&GS hydrographic surveys (1934)

Polyconic projection. 1927 North American datum
10,000-foot grid based on California coordinate system, zone 5
1000-meter Universal Transverse Mercator grid ticks,
zone 10, shown in blue

Red tint indicates areas in which only landmark buildings are shown
Dashed land lines indicate approximate locations
Unchecked elevations are shown in brown



CONTOUR INTERVAL 80 FEET
DOTTED LINES REPRESENT 20 FOOT CONTOURS
DATUM IS MEAN SEA LEVEL
DEPTH CURVES IN FEET—DATUM IS MEAN LOWER LOW WATER
SHORELINE SHOWN REPRESENTS THE APPROXIMATE LINE OF MEAN HIGH WATER
THE MEAN RANGE OF TIDE IS APPROXIMATELY 4 FEET

THIS MAP COMPLIES WITH NATIONAL MAP ACCURACY STANDARDS
FOR SALE BY U. S. GEOLOGICAL SURVEY, DENVER 25, COLORADO OR WASHINGTON 25, D. C.
A FOLDER DESCRIBING TOPOGRAPHIC MAPS AND SYMBOLS IS AVAILABLE ON REQUEST

USGS
Historical File
Topographic Division

ROAD CLASSIFICATION
Medium-duty — Light-duty
Unimproved dirt — State Route



U.S.G.S.
FILE COPY
TOPOGRAPHIC DIVISION

This area also covered by 1:24 000-scale maps of
Guadalupe 1959, Point Sal 1958, and
Casmalia 1959 7.5 minute quadrangles
POINT SAL, CALIF.
N3445—W12030/15

1959

3045

FEB 21 1961