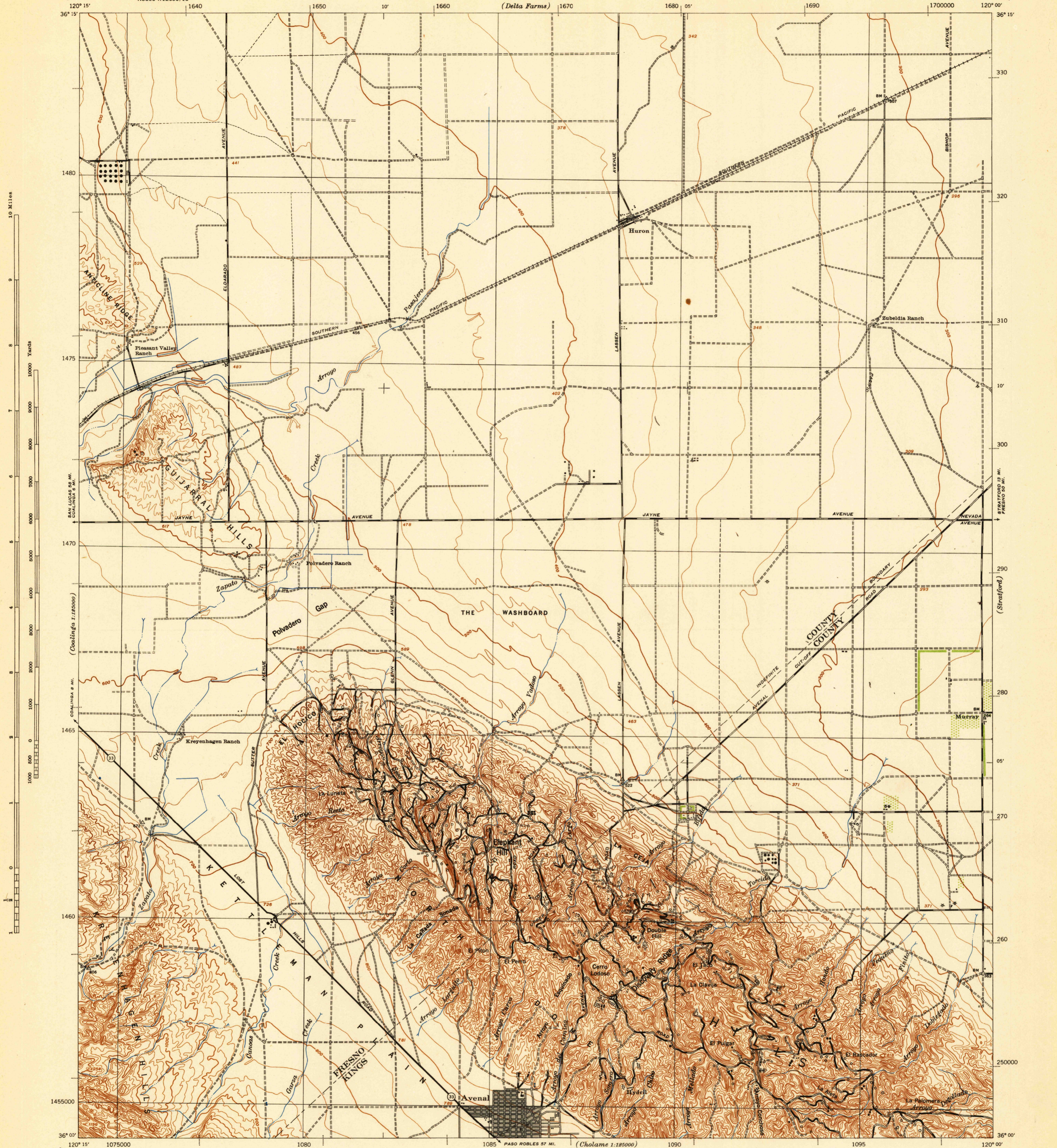


58

RESTRICTED CALIFORNIA POLVADERO GAP QUADRANGLE GRID ZONE "G"

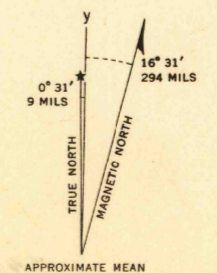
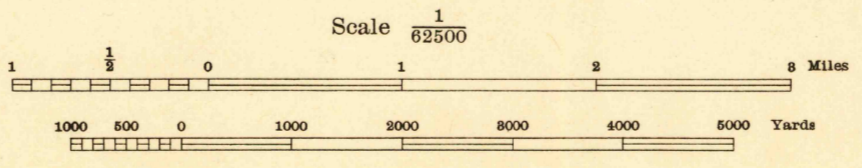
WAR DEPARTMENT CORPS OF ENGINEERS, U. S. ARMY

RESTRICTED CALIFORNIA POLVADERO GAP QUADRANGLE GRID ZONE "G"



Prepared under the direction of the Chief of Engineers, U. S. Army, 1942. Control by U. S. Geological Survey. Topography by U. S. Geological Survey, 1930. Photography by Agricultural Adjustment Administration, 1937, 1940. Planimetric detail revised by 29th Engineers, U. S. Army, 1942. Polyconic Projection, North American 1927 Datum.

29TH ENGINEER REPRODUCTION PLANT, PORTLAND, OREGON 1942



TEN THOUSAND FOOT PLANE COORDINATES COMPUTED FROM U. S. C. AND G. S. PROJECTION TABLES FOR CALIFORNIA IV ARE INDICATED BY SHORT DOTTED LINES ON ALL MARGINS AND BY COORDINATE NUMBERS ON THE TOP AND RIGHT MARGINS (THE LAST THREE DIGITS OF THE GRID NUMBERS ARE OMITTED)

**ROAD CLASSIFICATIONS**

Dependable hard surface, heavy duty road.	Loose surface graded, dry weather road.	U. S. Route 101
Secondary, hard surface, all weather road.	Unimproved road.	State Route 33
More than two lanes indicated by note with tick at point of change.	Road Data 1942	3 LANE 4 LANE

FIVE THOUSAND YARD GRID COMPUTED FROM "GRID SYSTEM FOR PROGRESSIVE MAPS IN THE U. S. C. AND G. S. SPECIAL PUBLICATION NO. 59 (THE LAST THREE DIGITS OF THE GRID NUMBERS ARE OMITTED)"

NOTE: OFFICERS USING THIS MAP WILL MARK HEREON CORRECTIONS AND ADDITIONS WHICH COME TO THEIR ATTENTION AND MAIL DIRECT TO "THE CHIEF OF ENGINEERS, WASHINGTON, D. C."

RETURN TO USGS HISTORICAL MAP ARCHIVES

RESTRICTED POLVADERO GAP, CALIF. N3600-W12000/15

HISTORICAL

Do not circulate