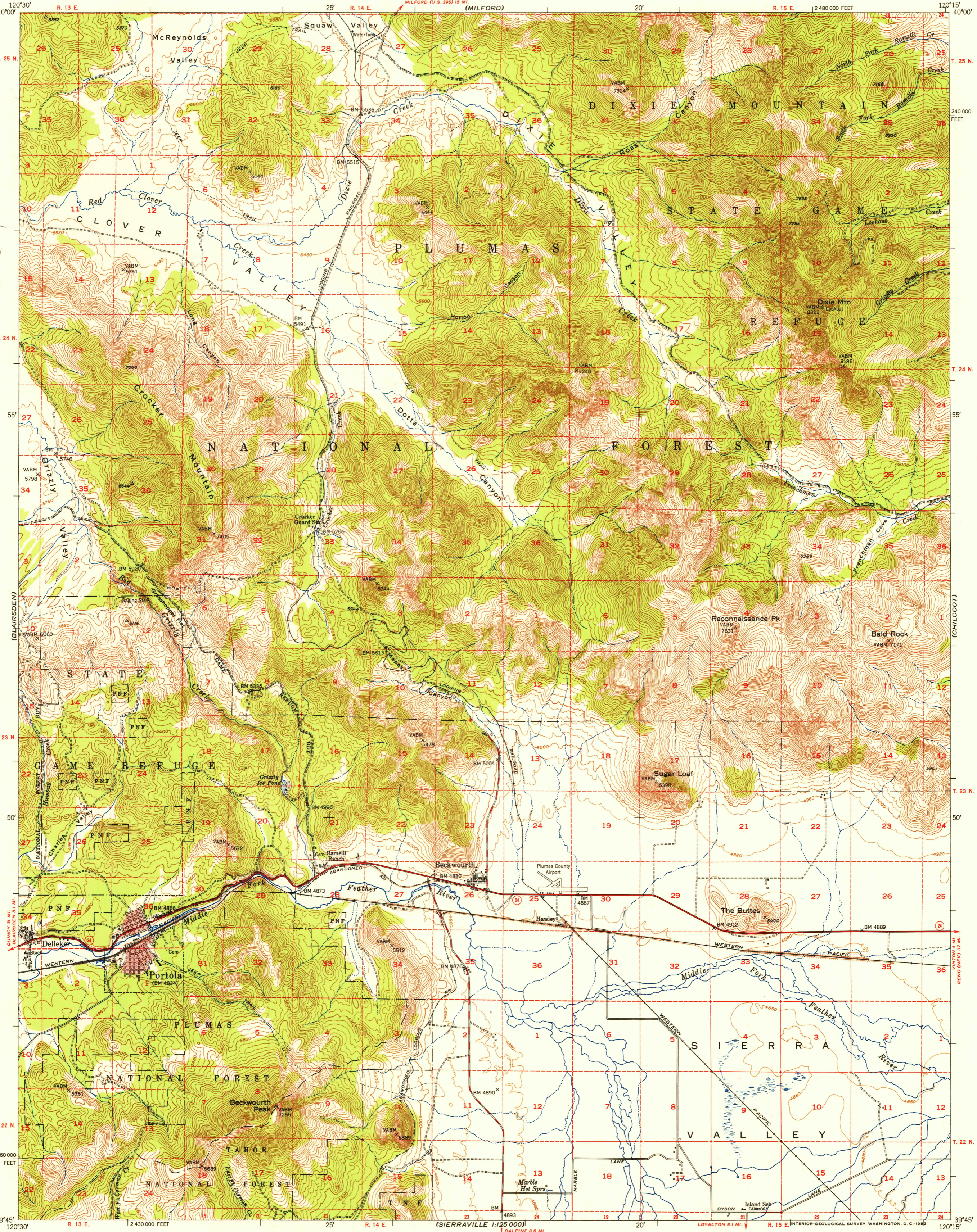
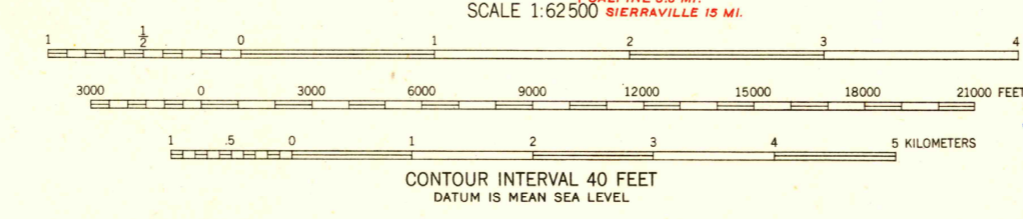


U.S.G.S.
FILE COPY
Inspection and Editing



Mapped by the U. S. Forest Service
Edited and published by the Geological Survey
Control by USGS, USC&GS, USBR, and USFS
Topography from aerial photographs by KEK plotter
Aerial photographs taken 1947 Field check 1950
Polyconic projection. 1927 North American datum
10,000-foot grid based on California coordinate system, zone 1
Dashed land lines indicate approximate locations
Red tint indicates area in which only landmark buildings are shown



USGS
Historical File
Topographic Division

ROAD CLASSIFICATION
Heavy-duty 4 LANE IS LANE Light-duty
Medium-duty 4 LANE IS LANE Unimproved dirt
U. S. Route State Route

U.S.G.S.
FILE COPY
Inspection and Editing

PORTOLA, CALIF.
N3945-W12015/15
1950

THIS MAP COMPLIES WITH NATIONAL MAP ACCURACY STANDARDS
FOR SALE BY U. S. GEOLOGICAL SURVEY, FEDERAL CENTER, DENVER, COLORADO OR WASHINGTON 25, D. C.
A FOLDER DESCRIBING TOPOGRAPHIC MAPS AND SYMBOLS IS AVAILABLE ON REQUEST