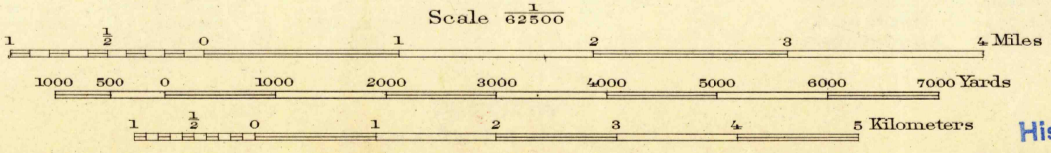
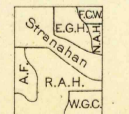




U. S. G. S.
FILE COPY
Inspection and Editing.

R. B. Marshall, Chief Geographer.
Geo. R. Davis, Geographer in charge.
Topography by William Stranahan, E. G. Hamilton,
R. A. Hamilton, W. G. Carson, N. A. Huth, F. C. Witt, and
Adolph Fankhauser.
Control by U. S. Coast and Geodetic Survey, L. F. Biggs,
N. E. Ballmer, and Gerald Fitzgerald.
Surveyed in 1918-1919.



Contour interval 50 feet.
Datum is mean sea level.

USGS
Historical File
Topographic Division

Polyconic projection, North American datum.
In joining with San Luis Obispo and Arroyo Grande, use dotted projection corners.
Land lines do not join La Panza sheet.

CALIF
POZO
Edition of 1922,
reprinted 1940
N3515-W1015/15

DEC 2 1940 (A955)

4955