

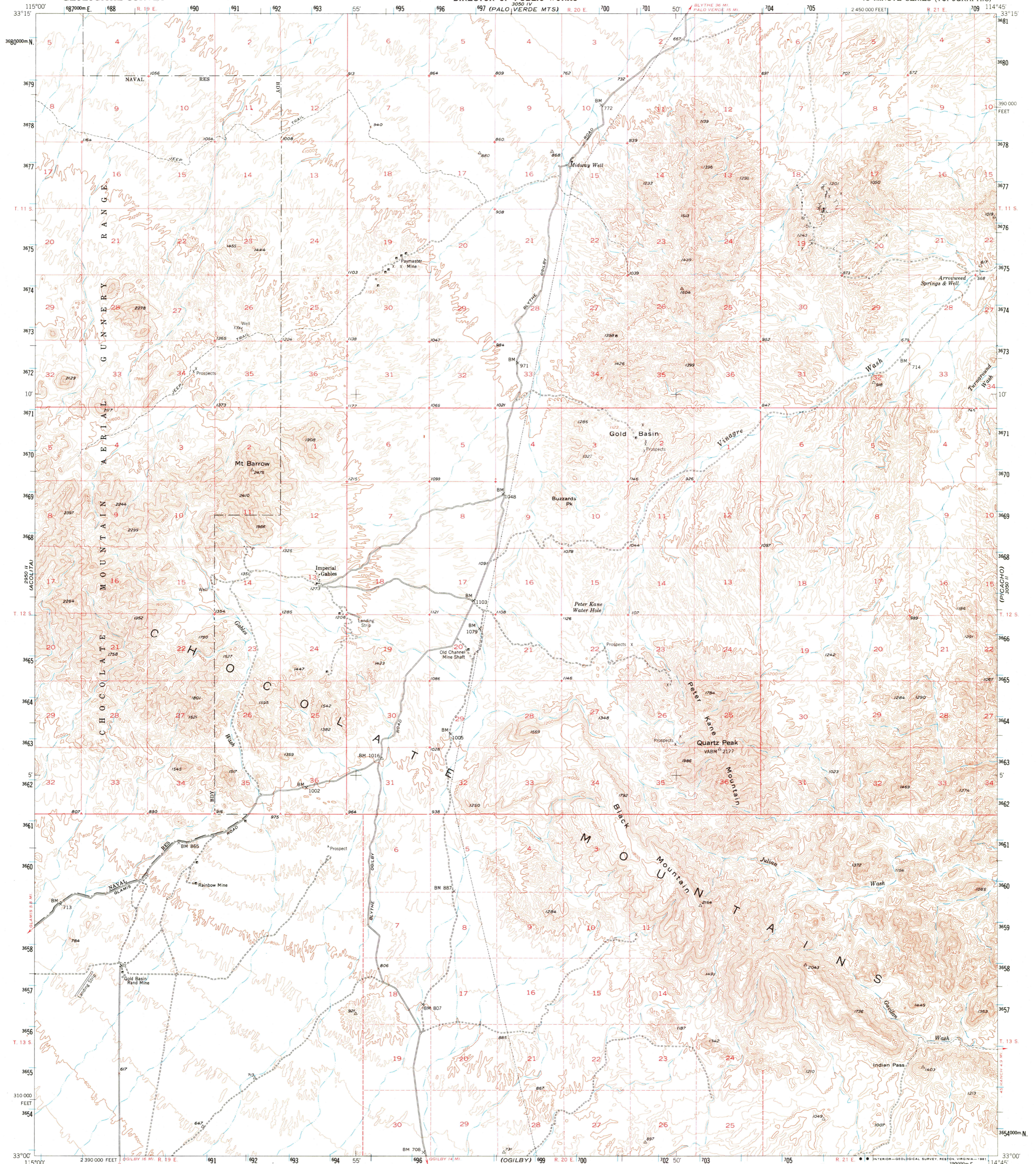
3900 I  
(CBL/CLW/LLA  
STRING)

3900 I  
(CBL/CLW/LLA  
STRING)

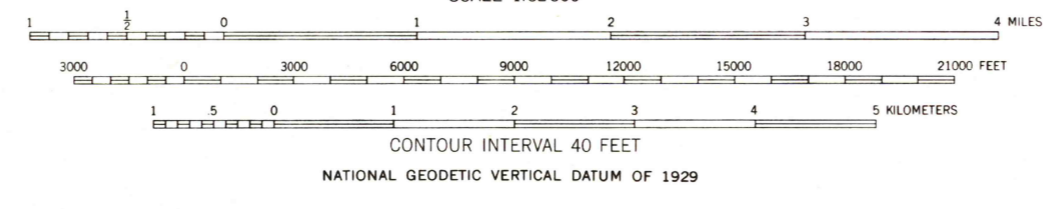
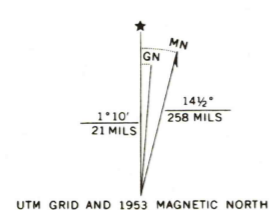
UNITED STATES  
DEPARTMENT OF THE INTERIOR  
GEOLOGICAL SURVEY

STATE OF CALIFORNIA  
DIRECTOR OF PUBLIC WORKS

QUARTZ PEAK QUADRANGLE  
CALIFORNIA-IMPERIAL CO.  
15 MINUTE SERIES (TOPOGRAPHIC)



Mapped, edited, and published by the Geological Survey  
Control by USGS, USCE, USC&GS, and City of Los Angeles  
Topography from aerial photographs by photogrammetric methods  
Aerial photographs taken 1948. Field check 1953  
Polyconic projection. 1927 North American datum  
10,000-foot grid based on California coordinate system, zone 6  
1000-meter Universal Transverse Mercator grid ticks,  
zone 11, shown in blue  
To place on the predicted North American Datum 1983  
move the projection lines 3 meters south and  
74 meters east  
Dashed land lines indicate approximate location  
Certain land lines are omitted because of insufficient data  
There may be private inholdings within the boundaries of the  
National or State reservations shown on this map



ROAD CLASSIFICATION  
Light duty ————— Unimproved dirt - - - - -

QUARTZ PEAK, CALIF.  
N 3300-W 11445/15

1953  
DMA 3050 III-SERIES V795

THIS MAP COMPLIES WITH NATIONAL MAP ACCURACY STANDARDS  
FOR SALE BY U.S. GEOLOGICAL SURVEY, DENVER, COLORADO 80225, OR RESTON, VIRGINIA 22092  
A FOLDER DESCRIBING TOPOGRAPHIC MAPS AND SYMBOLS IS AVAILABLE ON REQUEST

JUL 26 1982

2000