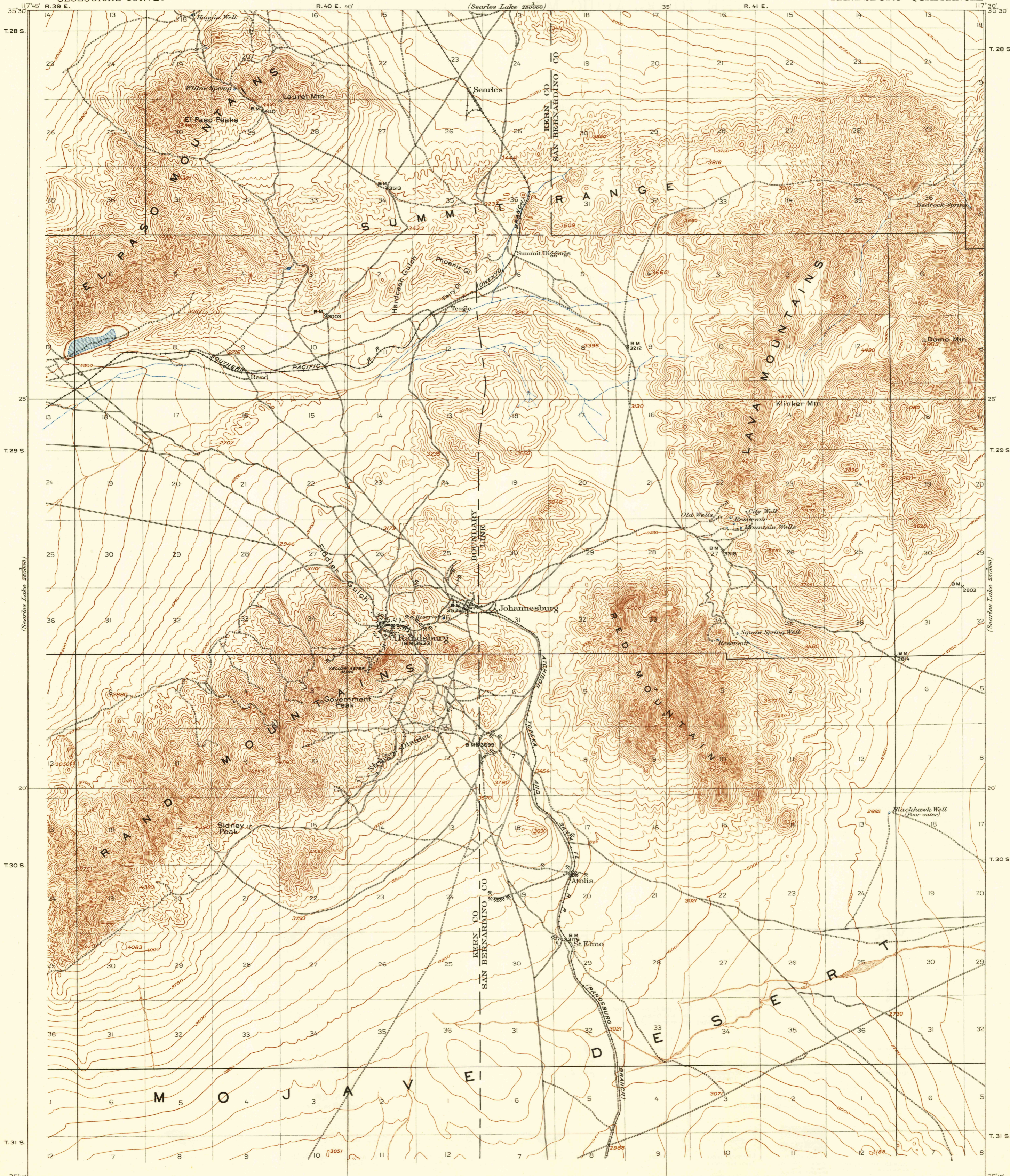


U.S.G.S.
FILE COPY
Inspection and Editing.

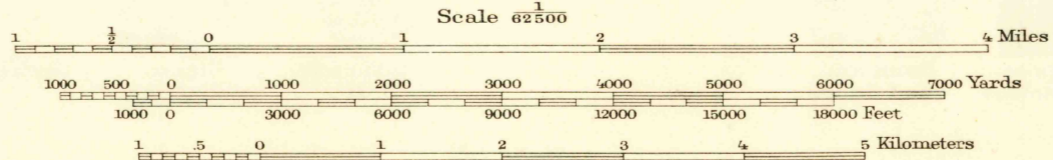
UNITED STATES
DEPARTMENT OF THE INTERIOR
GEOLOGICAL SURVEY

CALIFORNIA
RANDSBURG QUADRANGLE



117°45' R.39 E.
R.U.Goode, Geographer in charge.
Triangulation by R.U.Goode.
Topography by L.C.Fletcher and J.E.Rockhold.
Surveyed in 1900.
Culture revised in 1911 by T.P.Pendleton.

Fletcher
Rockhold



Contour interval 50 feet.
Datum is mean sea level,
based on profile of A.T.&S.F.R.R.

TRUE NORTH
MAGNETIC NORTH
APPROXIMATE MEAN
DECLINATION 1912

USGS
Historical File
Topographic Division
U.S.G.S.
FILE COPY
Inspection and Editing.

Edition of Feb. 1912, reprinted 1947
Polyconic projection, North American datum

CALIF.
RANDSBURG
N3515-W11730/15

APR 25 1947

3640