

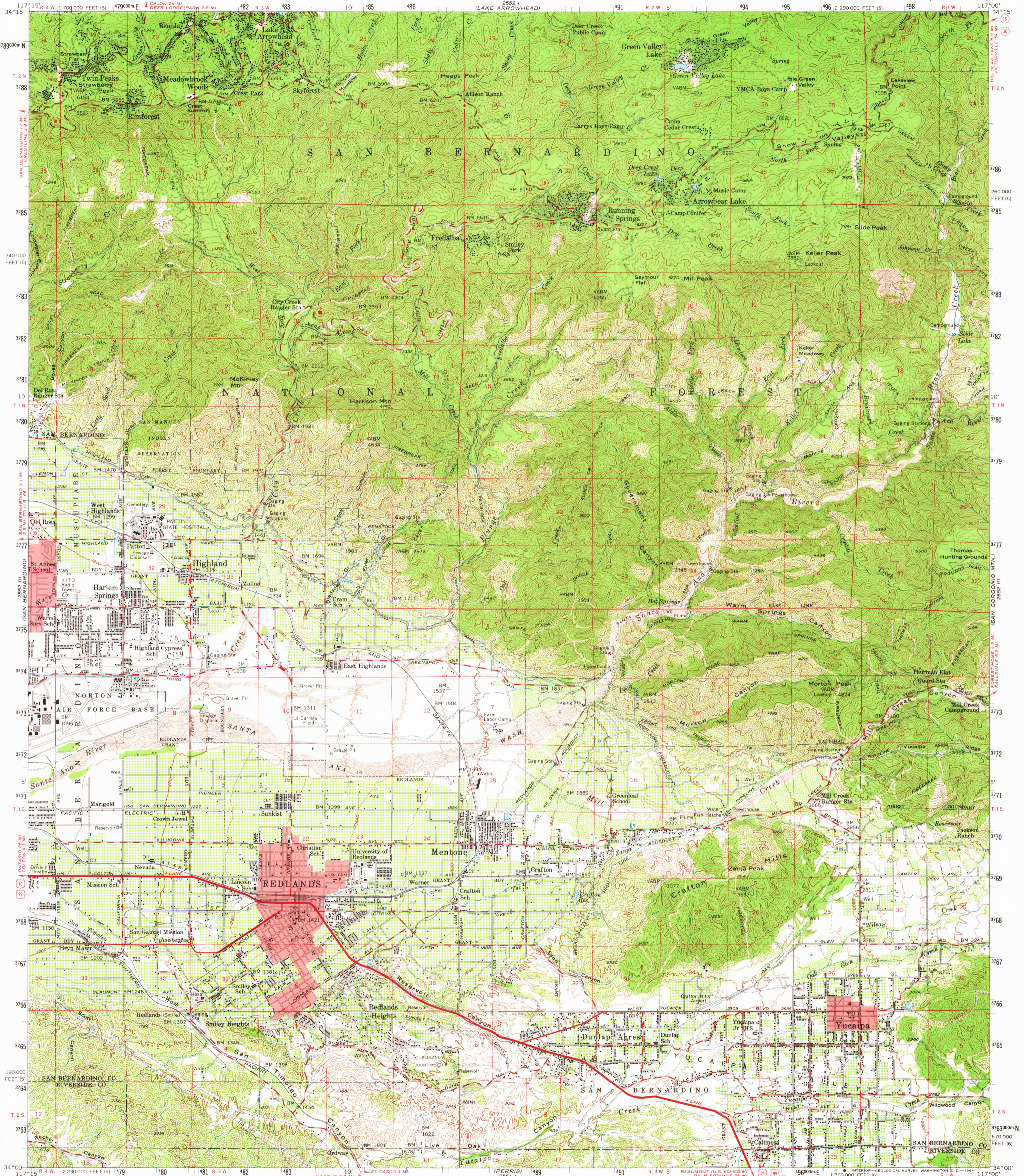
2552 IV SE
CEDAR SPRINGS

2552 IV SE
LUCERNE VALLEY

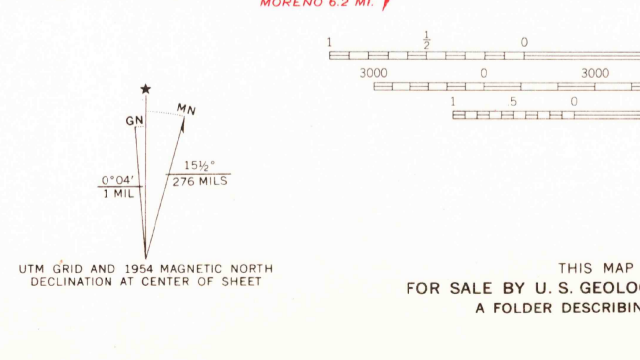
UNITED STATES
DEPARTMENT OF THE INTERIOR
GEOLOGICAL SURVEY

STATE OF CALIFORNIA
EDMUND G. BROWN GOVERNOR
HARVEY O. BANKS, DIRECTOR OF WATER RESOURCES
(LAKE ARROWHEAD)

REDLANDS QUADRANGLE
CALIFORNIA
15 MINUTE SERIES (TOPOGRAPHIC)



Mapped, edited, and published by the Geological Survey
Control by USGS, USC&GS, and USCE
Compiled in 1959 from 1:24 000-scale maps of Keller Peak,
Harrison Mtn., Redlands, and Yucaipa 7.5 minute quadrangles,
surveyed 1953 and 1954
Topography from aerial photographs by photogrammetric methods
and by planimetric surveys. Aerial photographs taken 1952
Polyconic projection. 1927 North American datum
10 000-foot grids based on California coordinate system, zones 5 and 6
1000-meter Universal Transverse Mercator grid ticks,
zone 11, shown in blue
Red tint indicates areas in which only landmark buildings are shown
Dashed land lines indicate approximate locations
Unchecked elevations are shown in brown



SCALE 1:62 500
CONTOUR INTERVAL 80 FEET
DATUM IS MEAN SEA LEVEL
THIS MAP COMPLIES WITH NATIONAL MAP ACCURACY STANDARDS
FOR SALE BY U. S. GEOLOGICAL SURVEY, DENVER 25, COLORADO OR WASHINGTON 25, D. C.
A FOLDER DESCRIBING TOPOGRAPHIC MAPS AND SYMBOLS IS AVAILABLE ON REQUEST

USGS
Historical File
Topographic Division

ROAD CLASSIFICATION
Heavy-duty ——— Light-duty ———
Medium-duty ——— Unimproved dirt ———
U. S. Route ——— State Route ———
OCT 14 1964
U.S.G.S. This area also covered by 1:24 000-scale maps of Keller Peak, Harrison Mtn., Redlands, and Yucaipa 7.5 minute quadrangles.
FILE COPY TOPOGRAPHIC DIVISION
REDLANDS, CALIF.
N3400—W11700/15
1954
AMS 2552 II—SERIES V795

OCT 14 1964

8365