

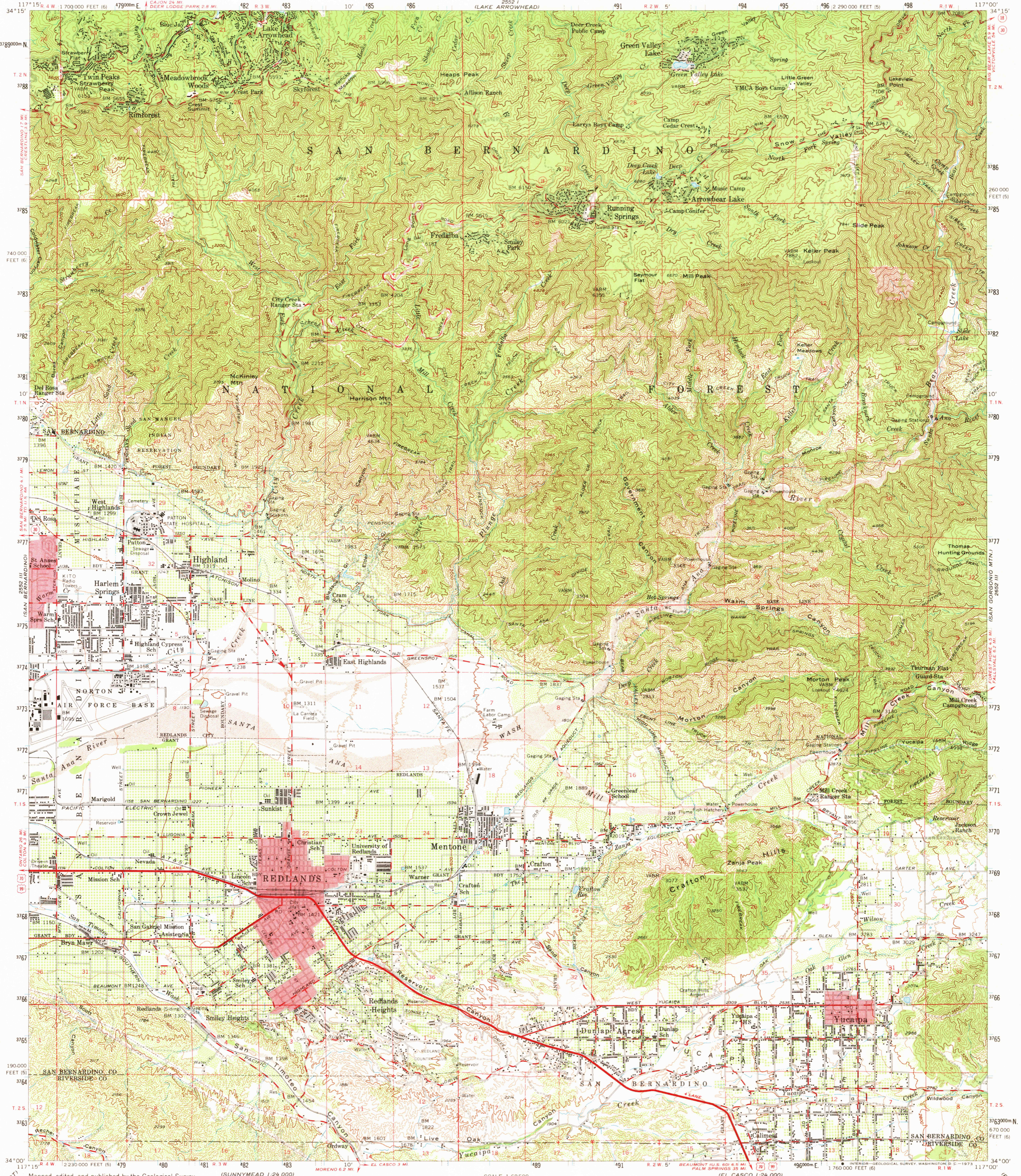
2552 IV SE
RIVERSIDE (EAST)
1:24,000

UNITED STATES
DEPARTMENT OF THE INTERIOR
GEOLOGICAL SURVEY

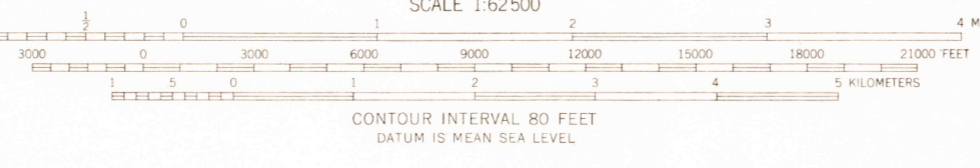
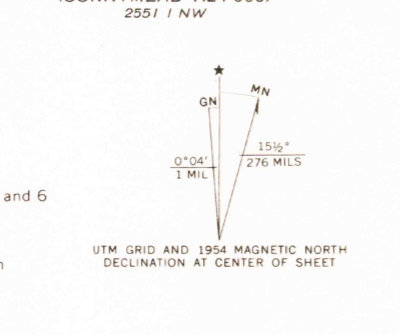
STATE OF CALIFORNIA
EDMUND G. BROWN GOVERNOR
HARVEY O. BANKS, DIRECTOR OF WATER RESOURCES

REDLANDS QUADRANGLE
CALIFORNIA
15 MINUTE SERIES (TOPOGRAPHIC)

2552 IV
LUCCERNE VALLEY



Mapped, edited, and published by the Geological Survey
Control by USGS, USC&GS, and USCE
Compiled in 1959 from 1:24 000-scale maps of Keller Peak,
Harrison Mtn., Redlands, and Yucaipa 7.5 minute quadrangles,
surveyed 1953 and 1954
Topography from aerial photographs by photogrammetric methods
and by plane-table surveys. Aerial photographs taken 1952
Polyconic projection. 1927 North American datum
10,000-foot grids based on California coordinate system, zones 5 and 6
1,000-meter Universal Transverse Mercator grid ticks,
zone 11, shown in blue
Red tint indicates areas in which only landmark buildings are shown
Dashed land lines indicate approximate locations
Unchecked elevations are shown in brown



THIS MAP COMPLIES WITH NATIONAL MAP ACCURACY STANDARDS
FOR SALE BY U. S. GEOLOGICAL SURVEY, DENVER, COLORADO 80225 OR WASHINGTON, D. C. 20242
A FOLDER DESCRIBING TOPOGRAPHIC MAPS AND SYMBOLS IS AVAILABLE ON REQUEST

ROAD CLASSIFICATION
Heavy-duty ——— Light-duty ———
Medium-duty ——— Unimproved dirt ———
U. S. Route State Route
This area is also covered by 1:24 000-scale maps of
Keller Peak, Harrison Mtn., 1953, Redlands, and
Yucaipa 1954 7.5 minute quadrangles
REDLANDS, CALIF.
N3400—W11700/15
1954
AMS 2552 II—SERIES V795

2552 IV
LUCCERNE VALLEY