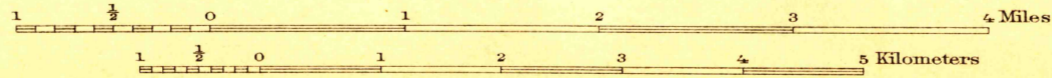


U.S.G.S.  
FILE COPY  
Inspection and Editing.

Henry Gannett, Chief Topographer.  
R.U. Goode, Geographer in charge.  
Triangulation by U.S. Coast and Geodetic Survey.  
Topography by U.S. Coast and Geodetic Survey  
and T.G. Gardine.  
Surveyed in 1894.



Contour interval 25 feet.  
Datum is mean sea level.

USGS  
Historical File  
Topographic Division  
FILE COPY  
Inspection and Editing.

Edition of Sept. 1896, reprinted 1922.

FEB 13 1923 1075

REDONDO