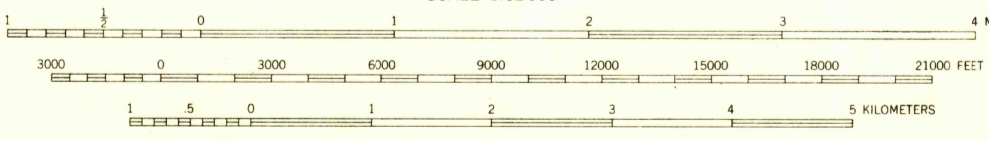
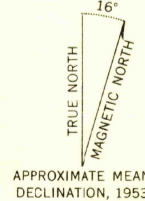


Mapped, edited, and published by the Geological Survey
Control by USGS, USC&GS, and USCE
Topography from aerial photographs by multiplex methods
and by plane-table surveys 1953. Aerial photographs taken 1948
Polyconic projection. 1927 North American datum
10,000-foot grid based on California coordinate system,
zone 5
Red tint indicates areas in which only
landmark buildings are shown
Dashed land lines indicate approximate locations
1000-meter Universal Transverse Mercator grid ticks,
zone 11, shown in blue



CONTOUR INTERVAL 40 FEET
DOTTED LINES REPRESENT HALF-INTERVAL CONTOURS
DATUM IS MEAN SEA LEVEL

USGS
Historical File
Topographic Division

ROAD CLASSIFICATION
Medium-duty — Light duty
Unimproved dirt —
U.S. Route



U.S.G.S.
FILE COPY
TOPOGRAPHIC DIVISION

RIDGECREST, CALIF.
N3530-W11730/15
1953

THIS MAP COMPLIES WITH NATIONAL MAP ACCURACY STANDARDS
FOR SALE BY U. S. GEOLOGICAL SURVEY, DENVER 25, COLORADO OR WASHINGTON 25, D. C.
A FOLDER DESCRIBING TOPOGRAPHIC MAPS AND SYMBOLS IS AVAILABLE ON REQUEST

FEB 25 1960